

## Prices

### Carcasse

#### EU Prices week

22

Evolution since last week

Evolution since last month

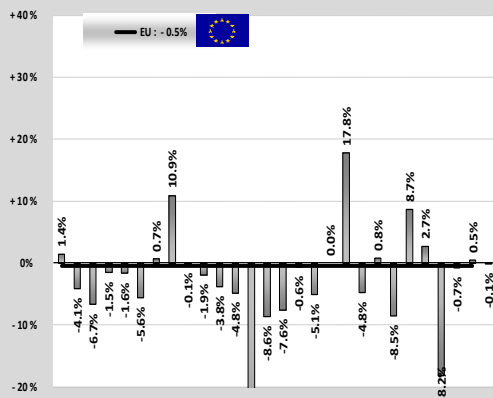
Evolution since last year

Category	Price (€/100 kg)	Evolution since last week	Evolution since last month	Evolution since last year
Average A/C/Z-R3	372.	+ 0.2%	- 0.4%	+ 2.5%
Young Bovines (Z)	387.	+ 0.2%	+ 3.6%	+ 0.2%
Young Bulls (A)	365.	+ 0.3%	- 0.4%	+ 3.0%
Steers (C)	412.0	- 0.1%	+ 0.2%	+ 0.3%
Cows (D)	297.7	+ 0.6%	+ 2.4%	+ 7.4%
Heifers (E)	389.5	- 0.0%	+ 0.4%	+ 1.7%
Male Calves Dairy Type	123.4	+ 1.4%	+ 9.8%	+ 5.2%
Male Calves Beef Type	234.6	+ 0.2%	+ 5.8%	+ 0.2%
Young Store Cattle	2.37	- 2.0%	- 2.4%	- 0.1%
Yearling Male Store Cattle	2.28	- 1.1%	- 2.2%	- 2.4%
Yearling Female Store Cattle	2.33	- 0.4%	- 1.5%	+ 1.1%
Calves slaughtered <8M	500.	- 0.5%	- 1.6%	+ 1.7%

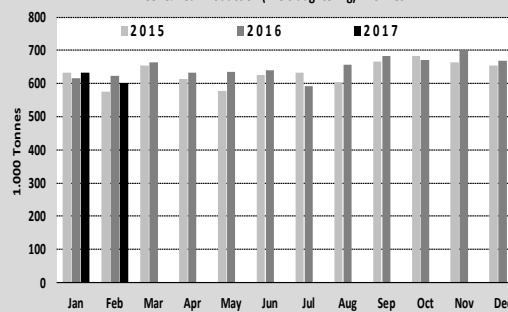
### Live Animals

## Production

TONNES	Jan-Feb 16/17	
	EU15	EU28
Bull	-3.4%	-2.9%
Bullock	-1.6%	-1.7%
Cow	+0.5%	+0.1%
Heifer	+0.9%	+1.1%
Calve	+4.2%	+4.1%
Young cattle	+0.4%	+0.6%
Meat of bovine animals	-0.4%	-0.5%

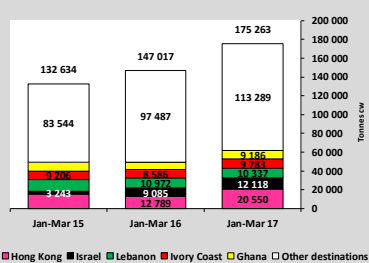


#### Beef & Veal Production (E28 Slaughtering) - Tonnes

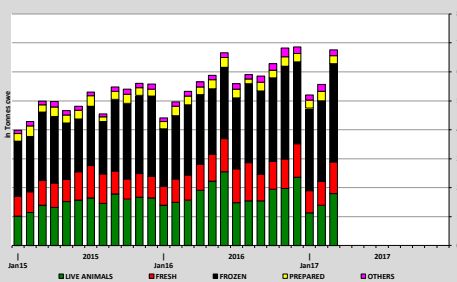


## Trade

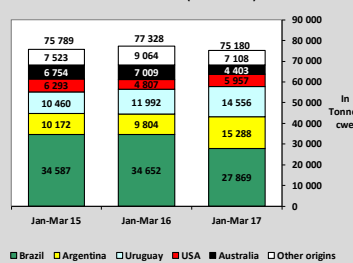
#### EU EXPORTS of Beef & Veal (Tonnes cwe)



#### EU-28 Exports of BEEF products

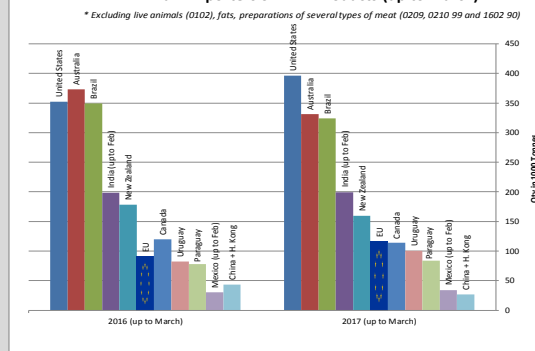


#### IMPORTS of Beef & Veal into EU (Tonnes cwe)

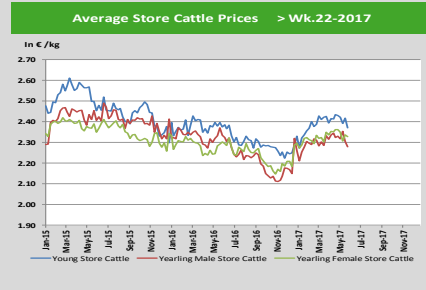
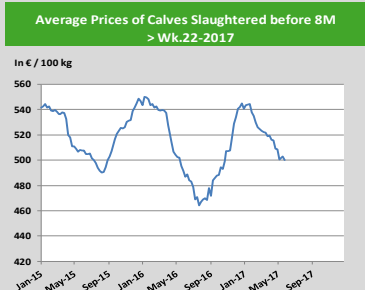
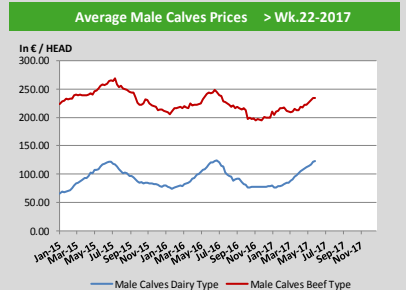
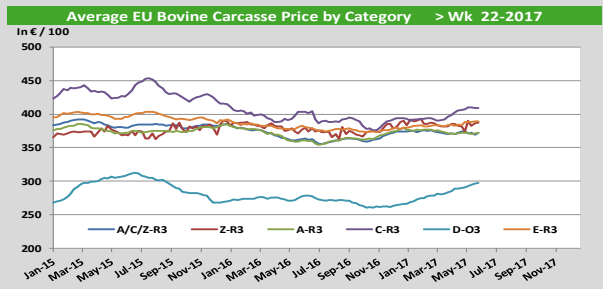
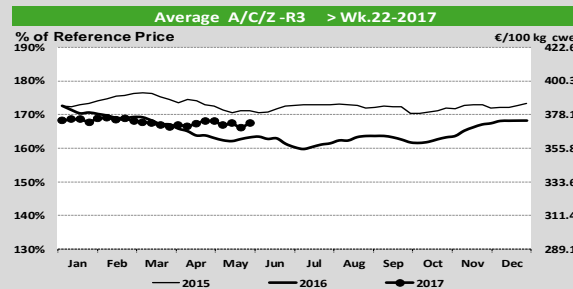
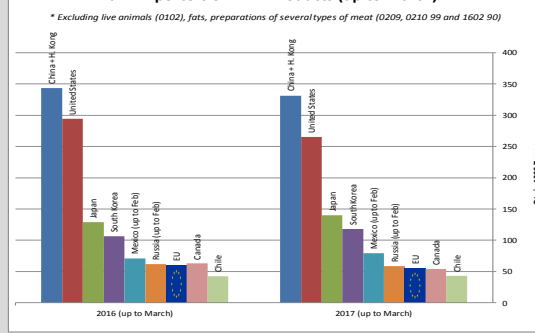


## World Trade

#### Main Exporters of BEEF Products (up to March)



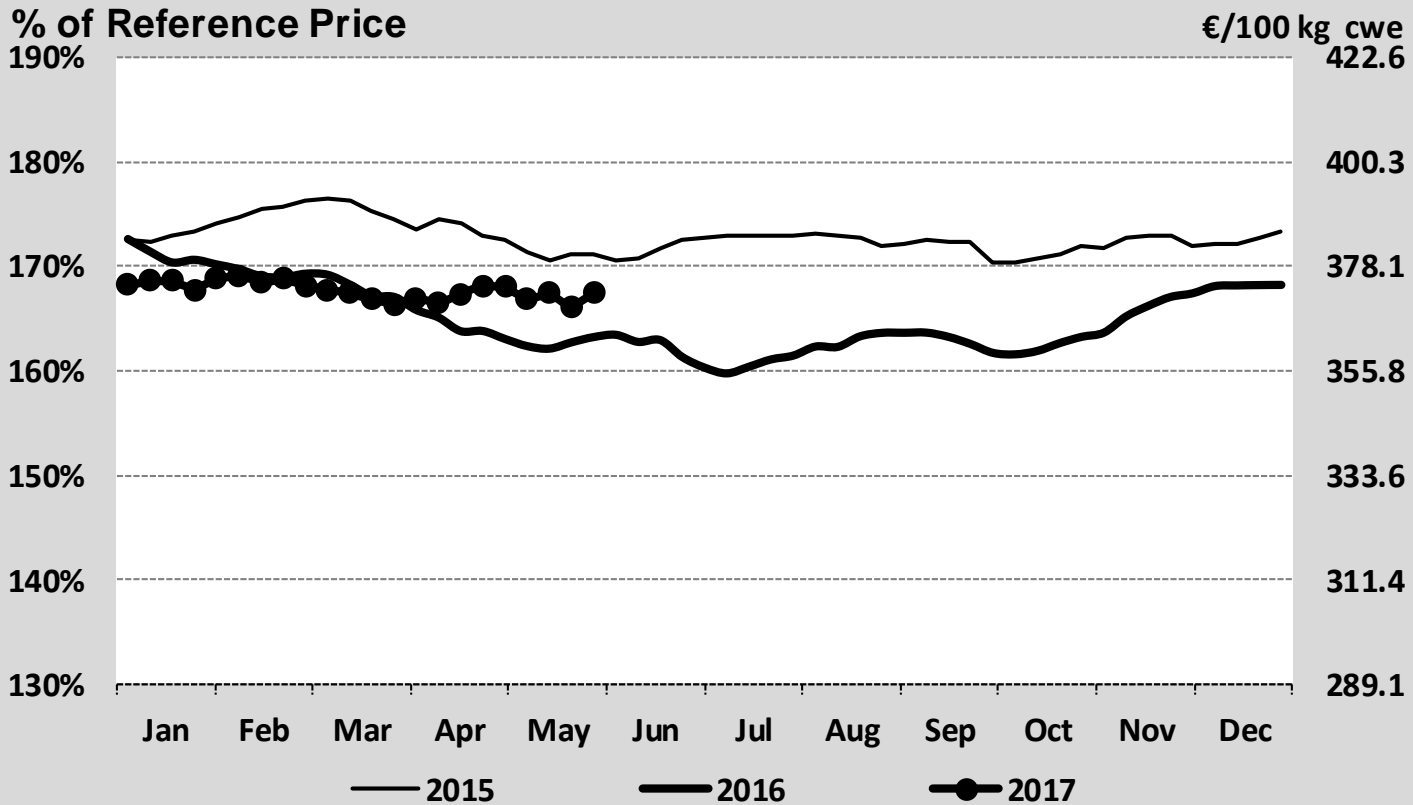
#### Main Importers of BEEF Products (up to March)



EU Prices week		22	Evolution since last week	Evolution since last month	Evolution since last year
<b>Carcasse</b>	Average A/C/Z-R3	372.	+ 0.2%	- 0.4%	+ 2.5%
	Young Bovines (Z)	387.	+ 0.2%	+ 3.6%	+ 0.2%
	Young Bulls (A)	365.	+ 0.3%	- 0.4%	+ 3.0%
	Steers (C)	412.0	- 0.1%	+ 0.2%	+ 0.3%
	Cows (D)	297.7	+ 0.6%	+ 2.4%	+ 7.4%
	Heifers (E)	389.5	- 0.0%	+ 0.4%	+ 1.7%
<b>Live Animals</b>	Male Calves Dairy Type	123.4	+ 1.4%	+ 9.8%	+ 5.2%
	Male Calves Beef Type	234.6	+ 0.2%	+ 5.8%	+ 0.2%
	Young Store Cattle	2.37	- 2.0%	- 2.4%	- 0.1%
	Yearling Male Store Cattle	2.28	- 1.1%	- 2.2%	- 2.4%
	Yearling Female Store Cattle	2.33	- 0.4%	- 1.5%	+ 1.1%
	Calves slaughtered <8M	500.	- 0.5%	- 1.6%	+ 1.7%

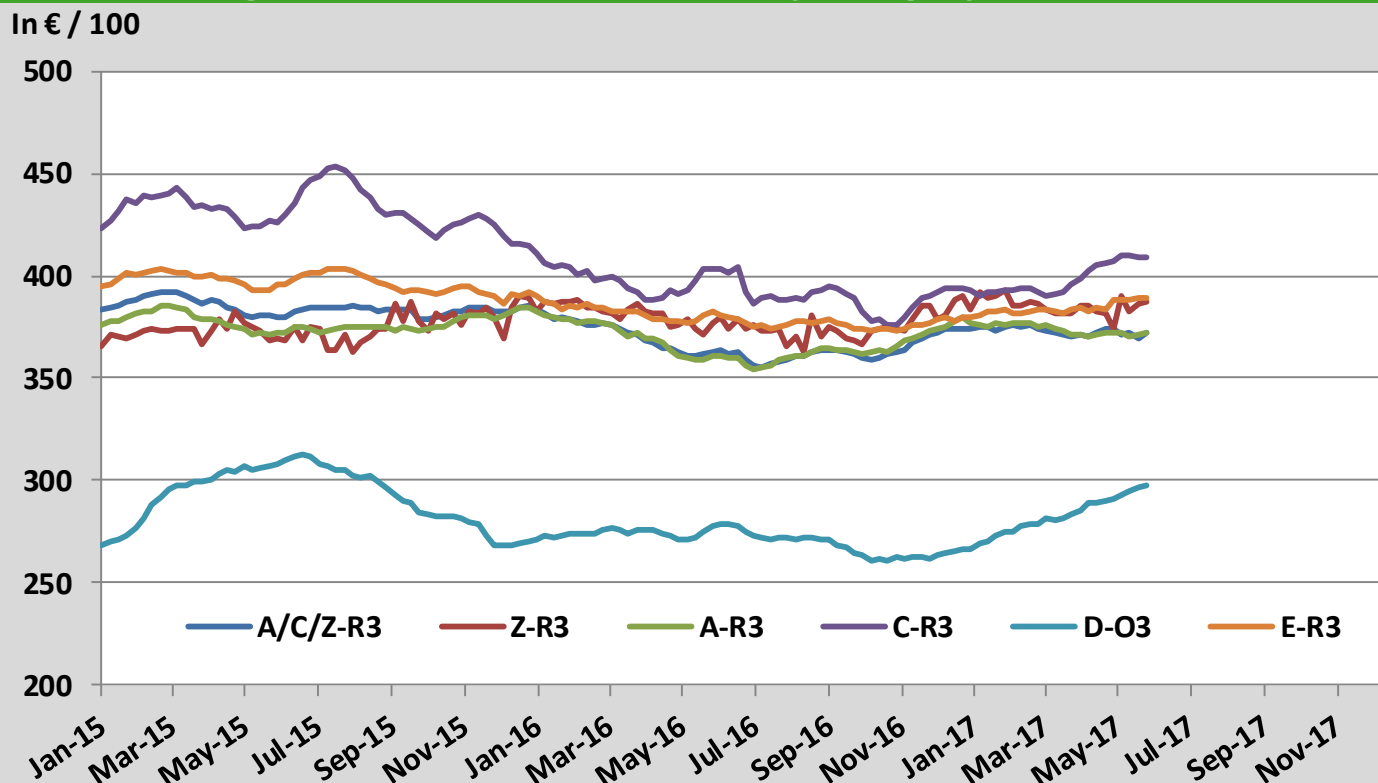
Sources : MSs notifications (Regulation (EC) 1249/2008 and 807/2013)

**Average A/C/Z -R3 > Wk.22-2017**



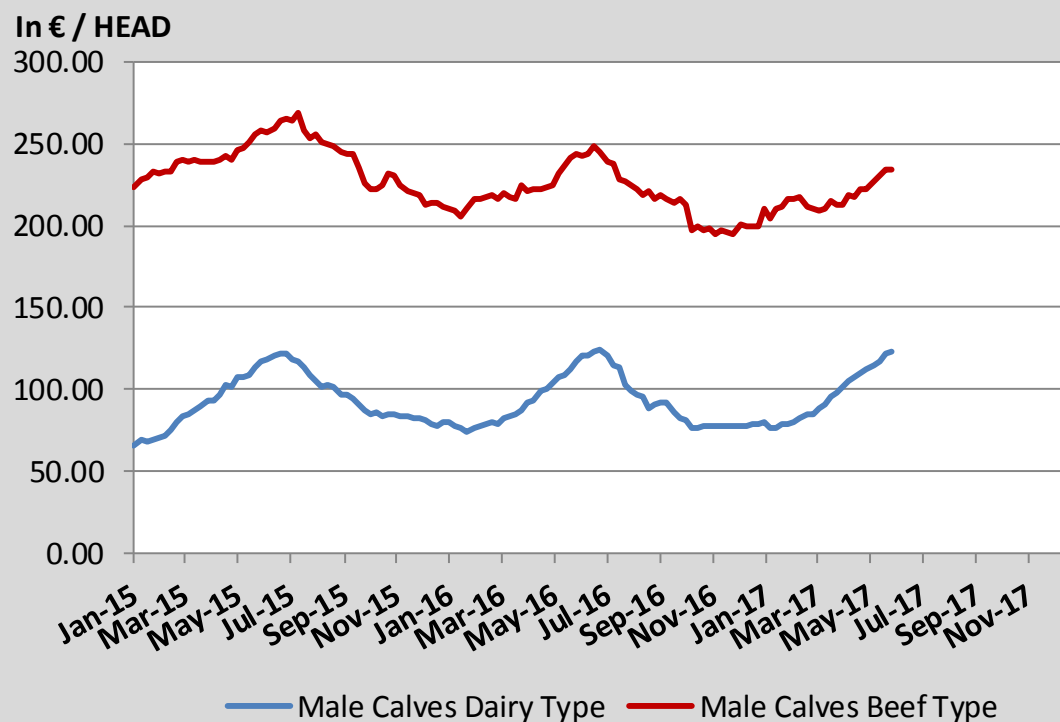
Source : MSs notifications (Regulation (EC) 1249/2008)

## Average EU Bovine Carcasse Price by Category > Wk 22-2017



Source : MSs notifications (Regulation (EC) 1249/2008)

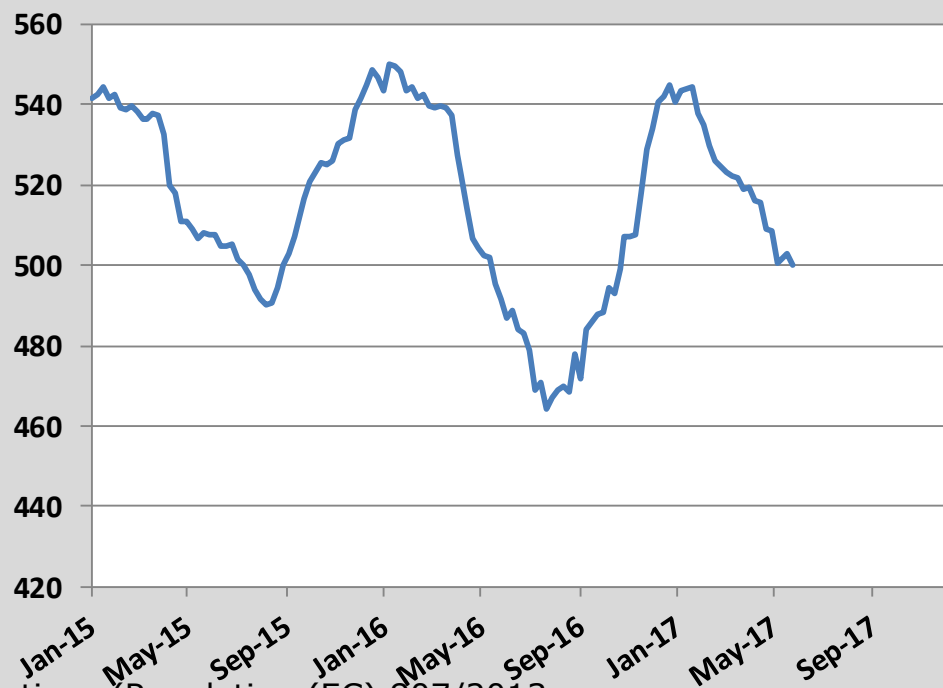
## Average Male Calves Prices > Wk.22-2017



Source : MSs notifications (Regulation (EC) 807/2013)

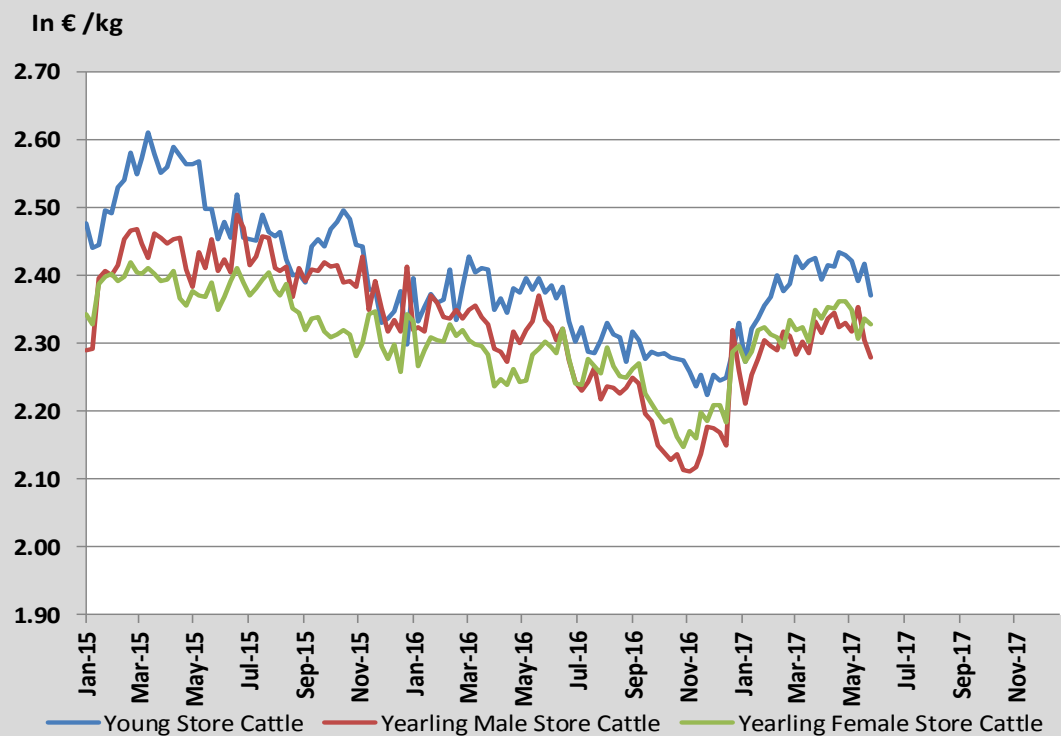
## Average Prices of Calves Slaughtered before 8M > Wk.22-2017

In € / 100 kg



Source : MSs notifications (Regulation (EC) 807/2013)

## Average Store Cattle Prices > Wk.22-2017

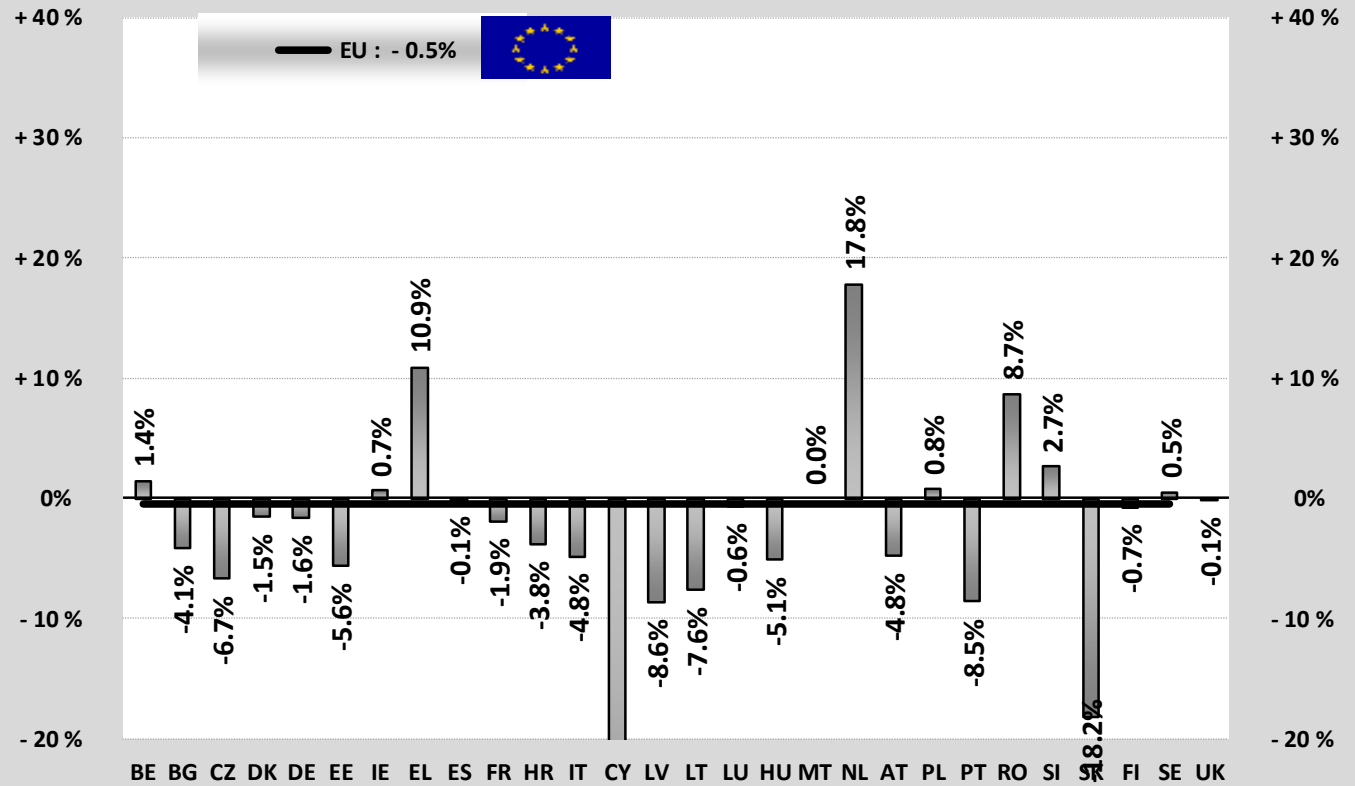


Source : MSs notifications (Regulation (EC) 807/2013)

TONNES	Jan-Feb 16/17	
	EU15	EU28
Bull	-3.4%	-2.9%
Bullock	-1.6%	-1.7%
Cow	+0.5%	+0.1%
Heifer	+0.9%	+1.1%
Calve	+4.2%	+4.1%
Young cattle	+0.4%	+0.6%
Meat of bovine animals	-0.4%	-0.5%

Estimates for last month :

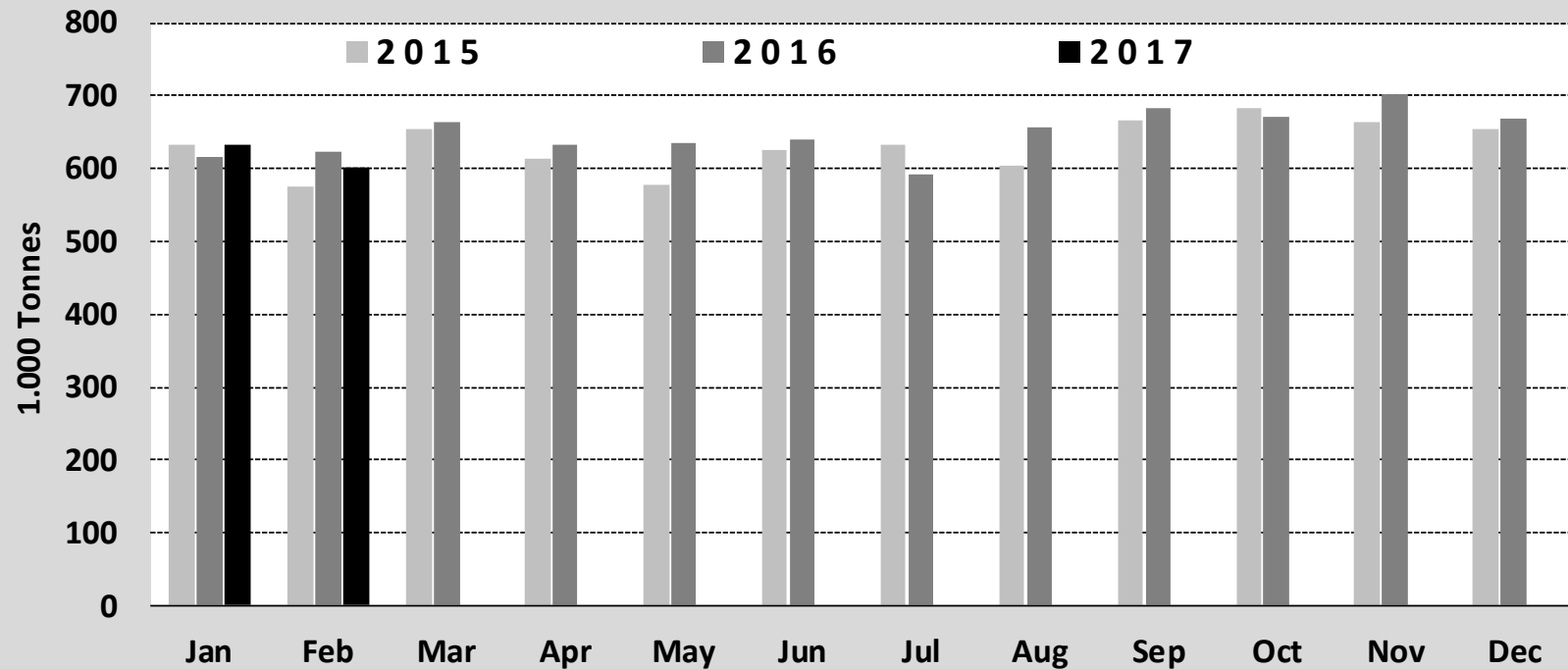
UK



Source : Eurostat

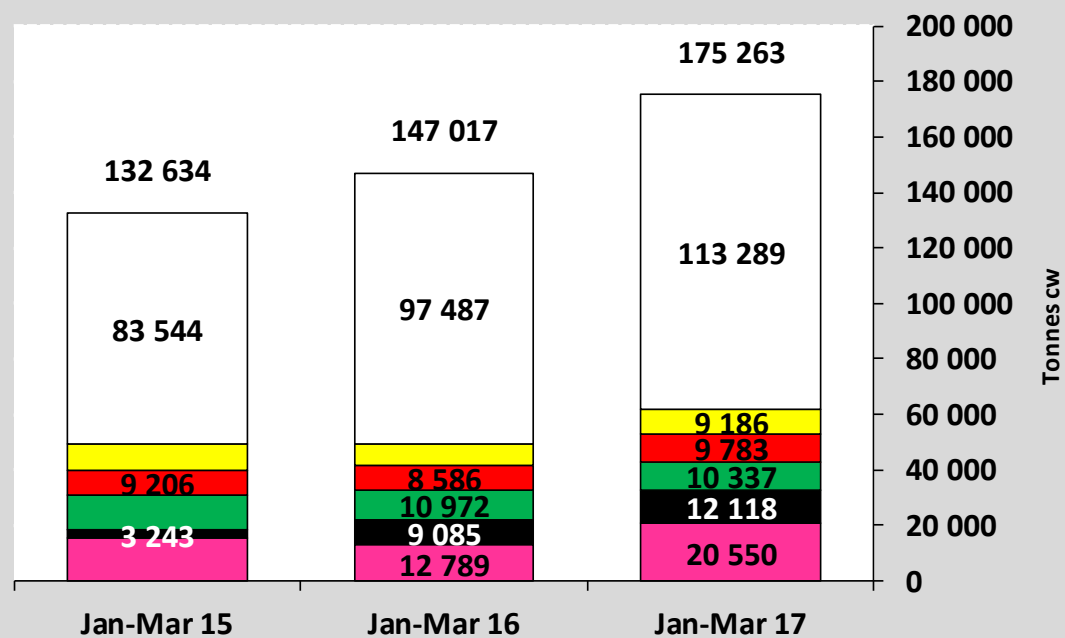


### Beef & Veal Production (E28 Slaughtering) - Tonnes



Source : Eurostat

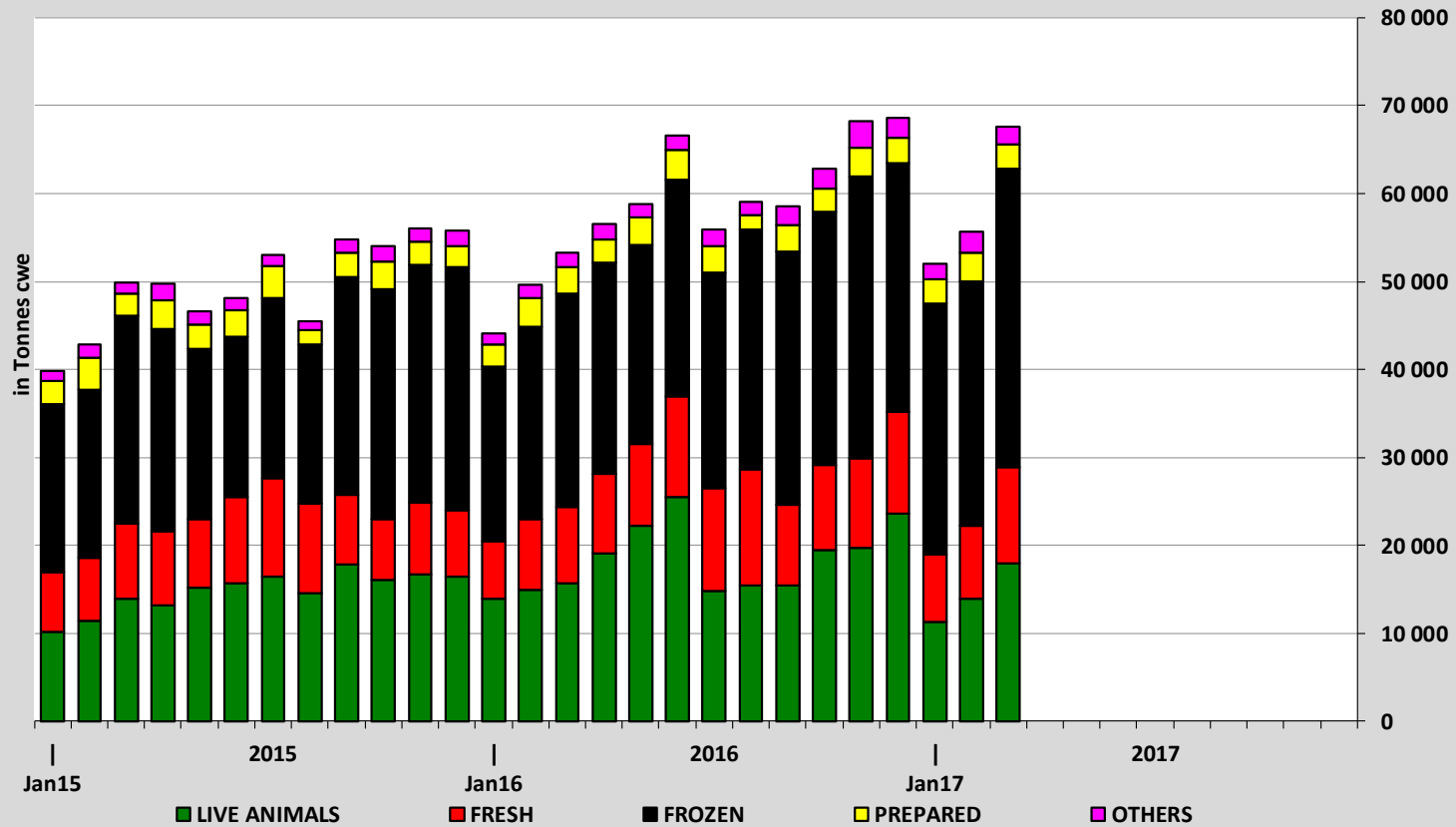
## EU EXPORTS of Beef & Veal (Tonnes cwe)



■ Hong Kong 
 ■ Israel 
 ■ Lebanon 
 ■ Ivory Coast 
 ■ Ghana 
 ■ Other destinations

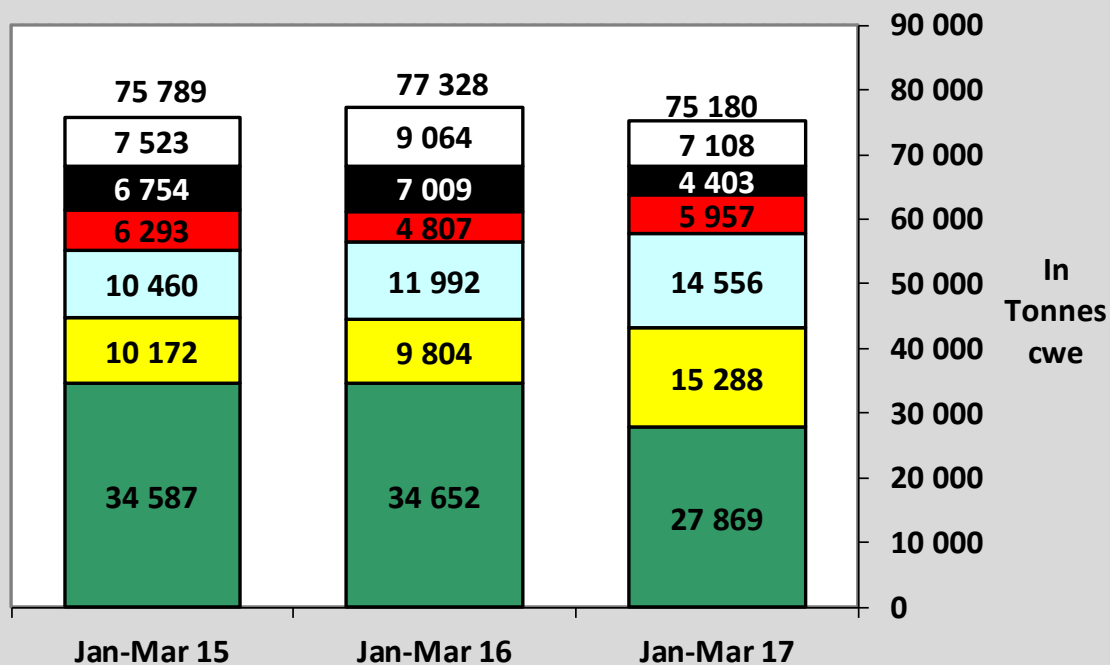
Source : Eurostat - Comext

## EU-28 Exports of BEEF products



Source : Eurostat - Comext

## IMPORTS of Beef & Veal into EU (Tonnes cwe)

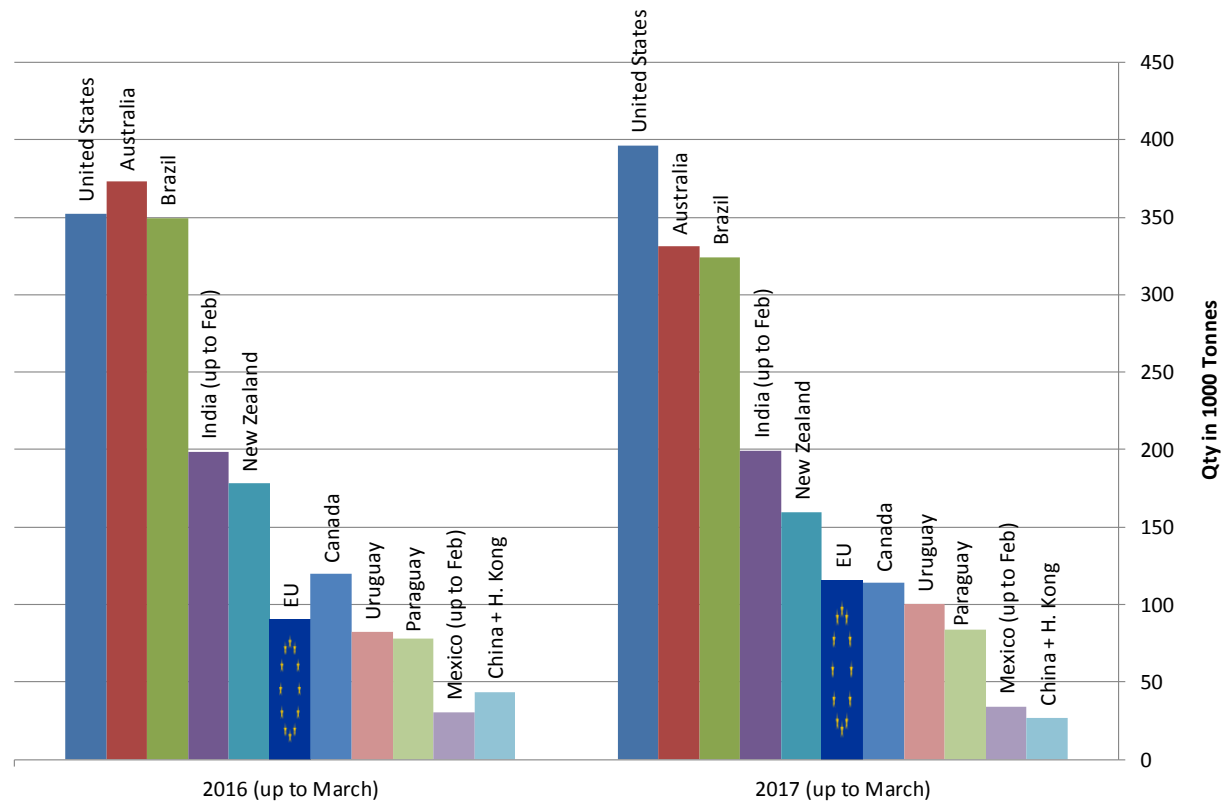


■ Brazil 
 ■ Argentina 
 ■ Uruguay 
 ■ USA 
 ■ Australia 
 ■ Other origins

Source : Eurostat - Comext

## Main Exporters of BEEF Products (up to March)

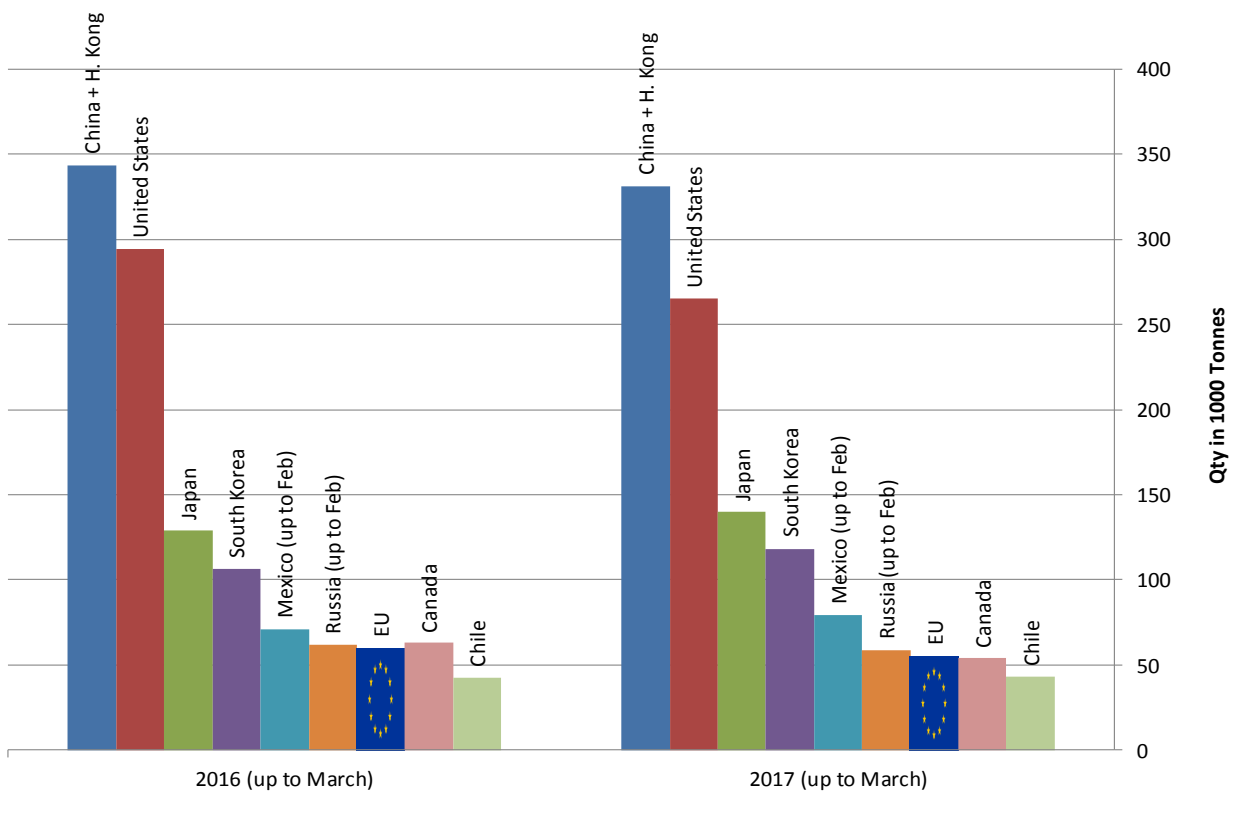
\* Excluding live animals (0102), fats, preparations of several types of meat (0209, 0210 99 and 1602 90)



Sources : Global Trade Information Services, Inc. and Eurostat - Comext

## Main Importers of BEEF Products (up to March)

\* Excluding live animals (0102), fats, preparations of several types of meat (0209, 0210 99 and 1602 90)



Sources : Global Trade Information Services, Inc. and Eurostat - Comext