

## EU Prices week

23

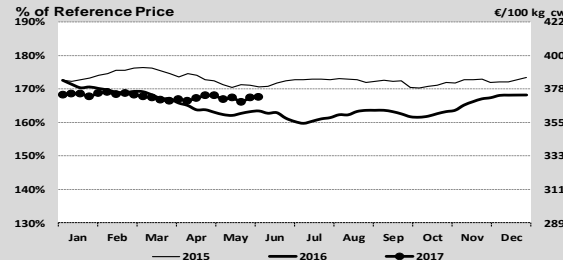
Evolution since last week

Evolution since last month

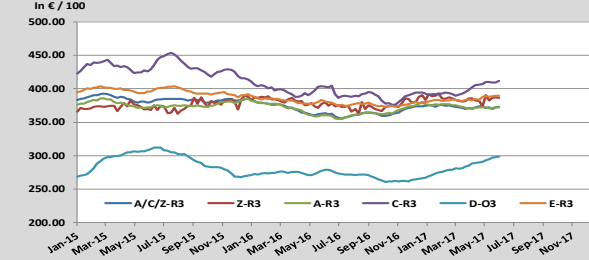
Evolution since last year

Category	Price (€)	Evolution since last week	Evolution since last month	Evolution since last year
Average A/C/Z -R3	372.0	+0.1%	+0.4%	+2.5%
Young Bovines (Z)	385.0	-0.4%	-1.0%	-0.4%
Young Bulls (A)	365.0	-0.0%	+0.9%	+2.8%
Steers (C)	413.4	+0.3%	-0.2%	+1.3%
Cows (D)	298.6	+0.3%	+1.9%	+7.1%
Heifers (E)	389.6	+0.0%	+0.3%	+2.3%
Male Calves Dairy Type	128.4	+4.1%	+12.1%	+6.4%
Male Calves Beef Type	238.8	+1.8%	+5.3%	+1.8%
Young Store Cattle	2.38	+0.4%	-1.7%	-0.2%
Yearling Male Store Cattle	2.31	+1.3%	-0.4%	-0.7%
Yearling Female Store Cattle	2.35	+0.8%	-0.1%	+2.3%
Calves slaughtered <8M	499.0	-0.2%	-0.3%	+2.6%

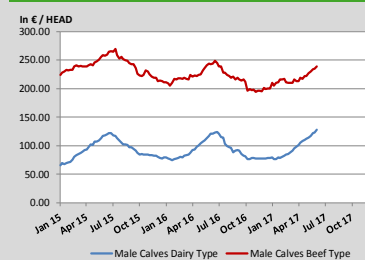
## Average A/C/Z -R3 > Wk.23-2017



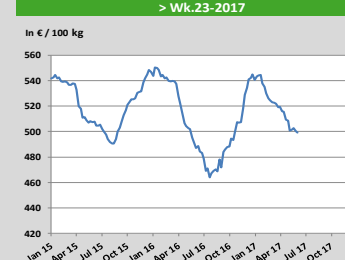
## Average EU Bovine Carcasse Price by Category > Wk. 23-2017



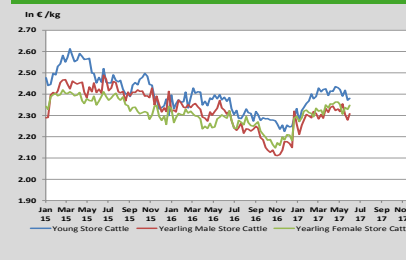
## Average Male Calves Prices > Wk.23-2017



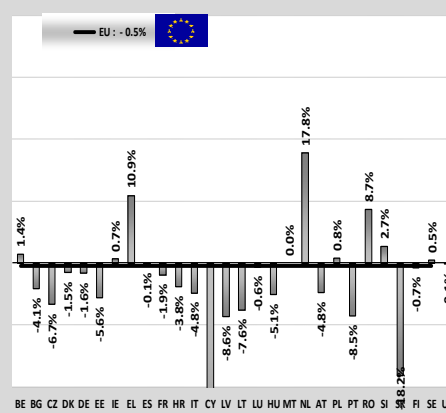
## Average Prices of Calves Slaughtered before 8M > Wk.23-2017



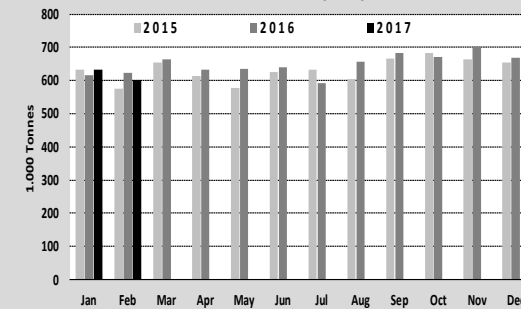
## Average Store Cattle Prices > Wk.23-2017



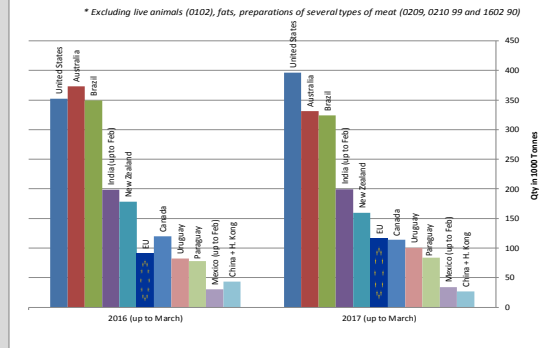
Category	Jan-Feb 16/17	
	EU15	EU28
Bull	-3.4%	-2.9%
Bullock	-1.6%	-1.7%
Cow	+0.5%	+0.1%
Heifer	+0.9%	+1.1%
Calve	+4.2%	+4.1%
Young cattle	+0.4%	+0.6%
Meat of bovine animals	-0.4%	-0.5%



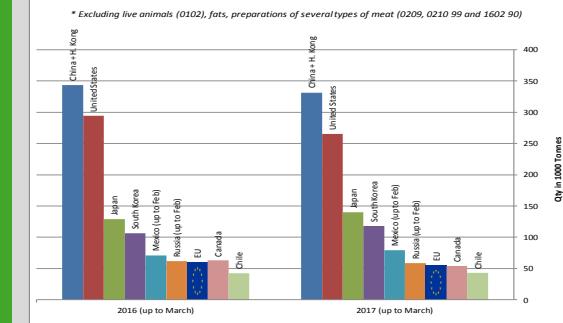
## Beef & Veal Production (E28 Slaughtering) - Tonnes



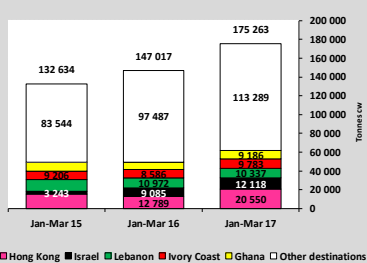
## Main Exporters of BEEF Products (up to March)



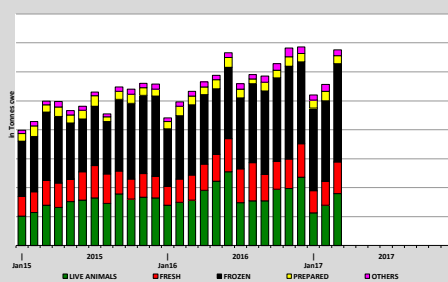
## Main Importers of BEEF Products (up to March)



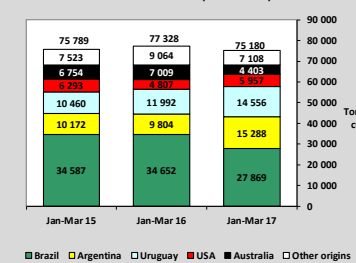
## EU EXPORTS of Beef & Veal (Tonnes cwe)



## EU-28 Exports of BEEF products



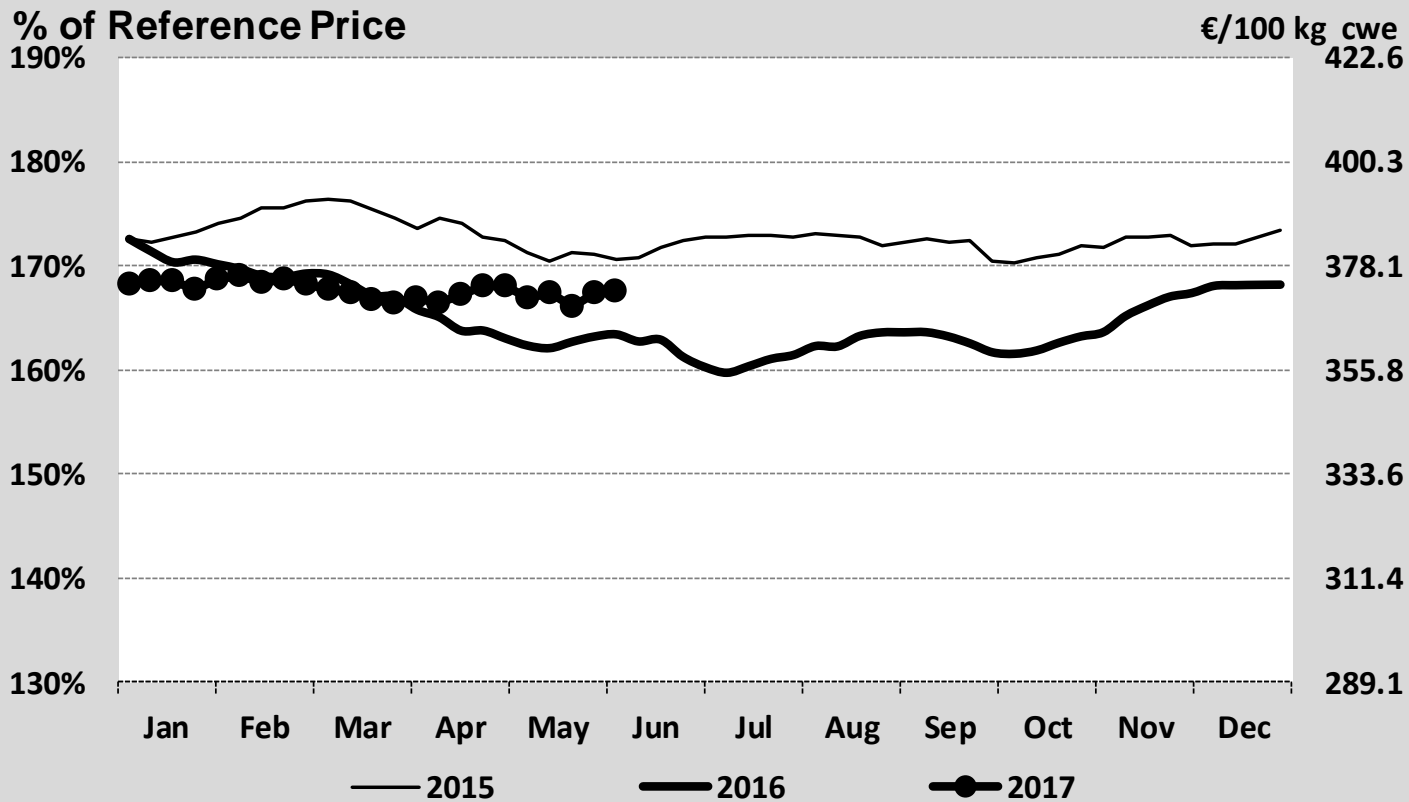
## IMPORTS of Beef & Veal into EU (Tonnes cwe)



EU Prices week		23	Evolution since last week	Evolution since last month	Evolution since last year
<b>Carcasse</b>	Average A/C/Z -R3	372.	+ 0.1%	+ 0.4%	+ 2.5%
	Young Bovines (Z)	385.	- 0.4%	- 1.0%	- 0.4%
	Young Bulls (A)	365.	- 0.0%	+ 0.9%	+ 2.8%
	Steers (C)	413.4	+ 0.3%	- 0.2%	+ 1.3%
	Cows (D)	298.6	+ 0.3%	+ 1.9%	+ 7.1%
	Heifers (E)	389.6	+ 0.0%	+ 0.3%	+ 2.3%
<b>Live Animals</b>	Male Calves Dairy Type	128.4	+ 4.1%	+ 12.1%	+ 6.4%
	Male Calves Beef Type	238.8	+ 1.8%	+ 5.3%	+ 1.8%
	Young Store Cattle	2.38	+ 0.4%	- 1.7%	- 0.2%
	Yearling Male Store Cattle	2.31	+ 1.3%	- 0.4%	- 0.7%
	Yearling Female Store Cattle	2.35	+ 0.8%	- 0.1%	+ 2.3%
	Calves slaughtered <8M	499.	- 0.2%	- 0.3%	+ 2.6%

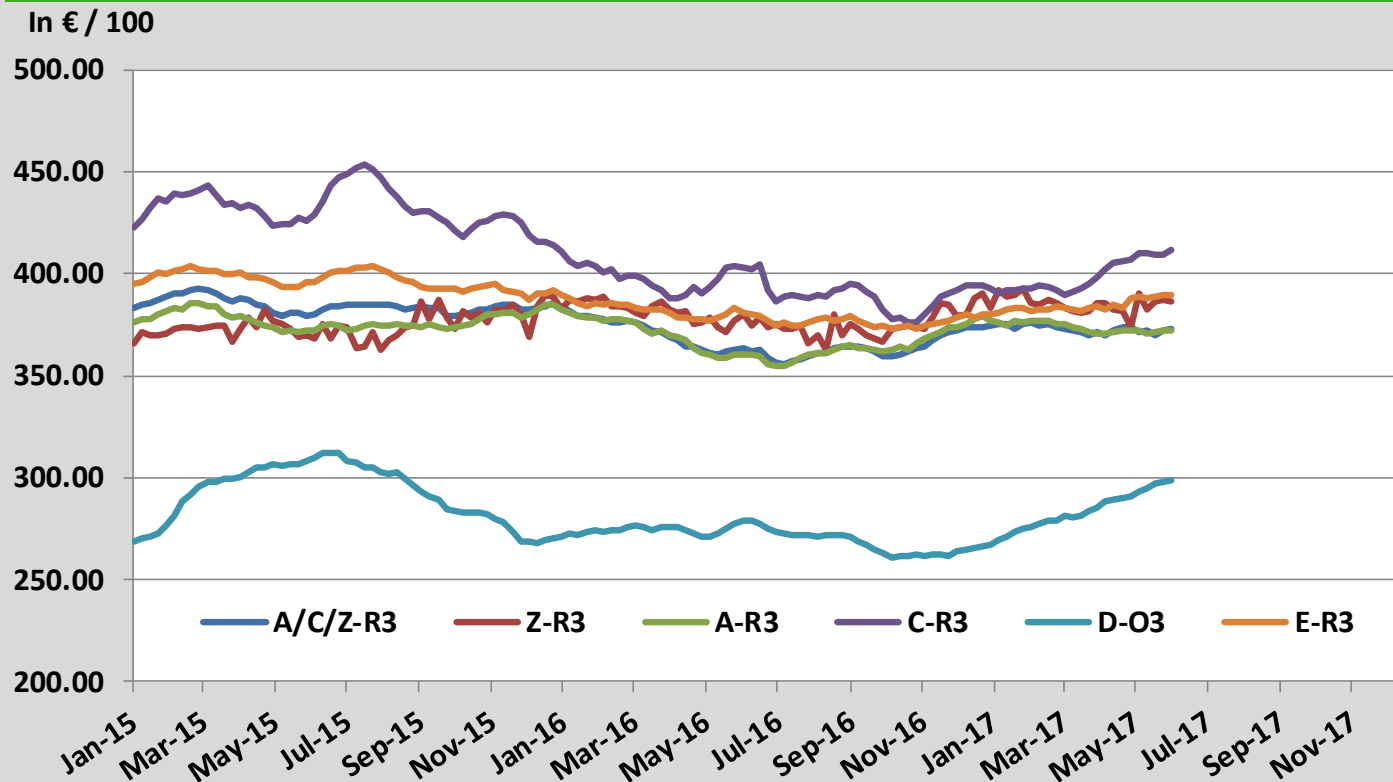
Sources : MSs notifications (Regulation (EC) 1249/2008 and 807/2013)

## Average A/C/Z -R3 > Wk.23-2017



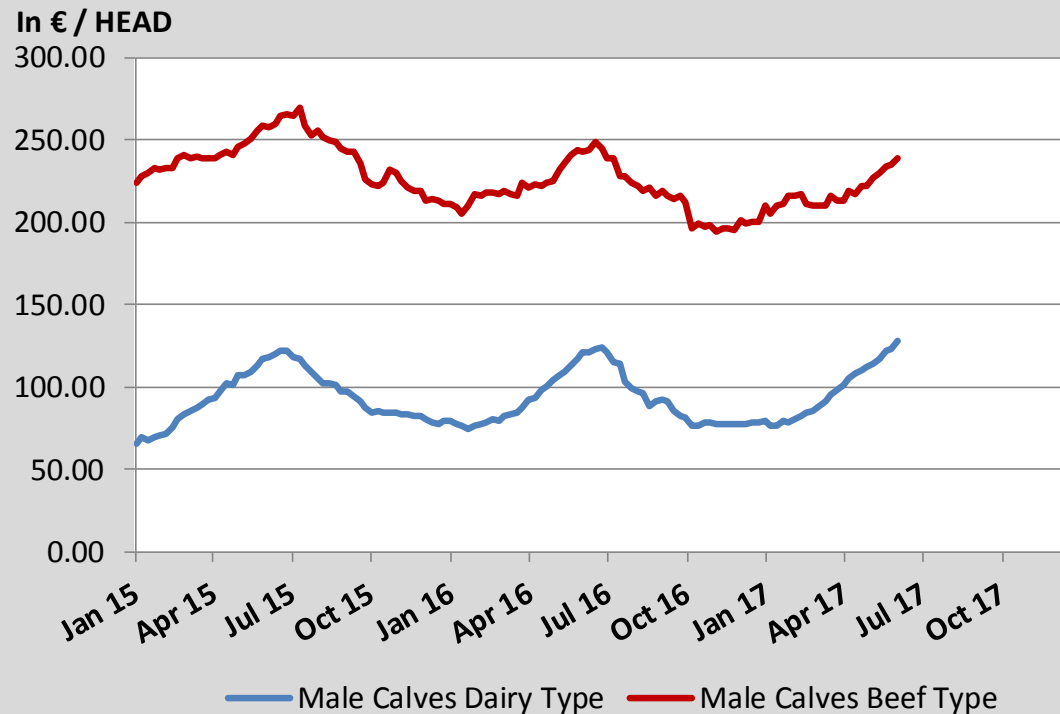
Source : MSs notifications (Regulation (EC) 1249/2008)

## Average EU Bovine Carcasse Price by Category > Wk 23-2017



Source : MSs notifications (Regulation (EC) 1249/2008)

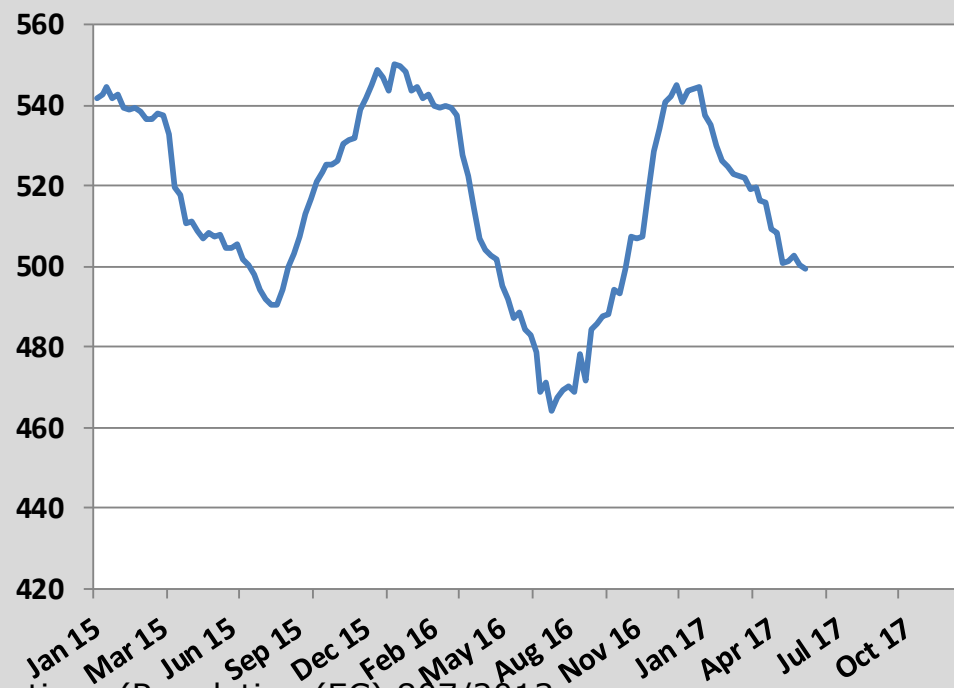
## Average Male Calves Prices > Wk.23-2017



Source : MSs notifications (Regulation (EC) 807/2013)

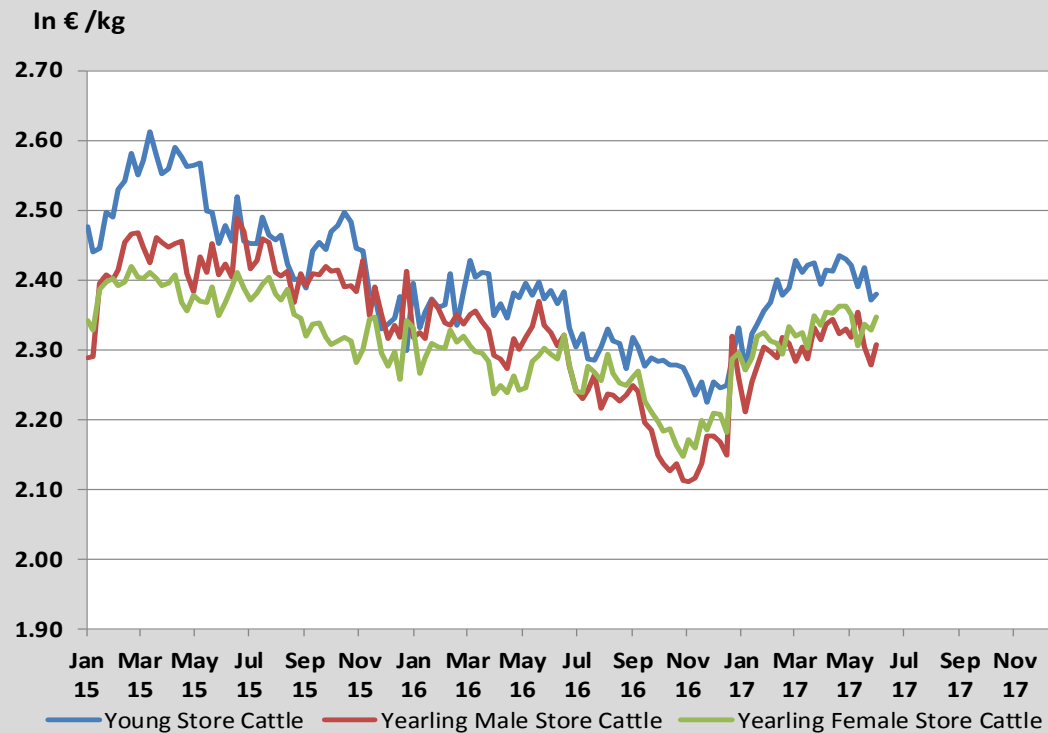
## Average Prices of Calves Slaughtered before 8M > Wk.23-2017

In € / 100 kg



Source : MSs notifications (Regulation (EC) 807/2013)

## Average Store Cattle Prices > Wk.23-2017

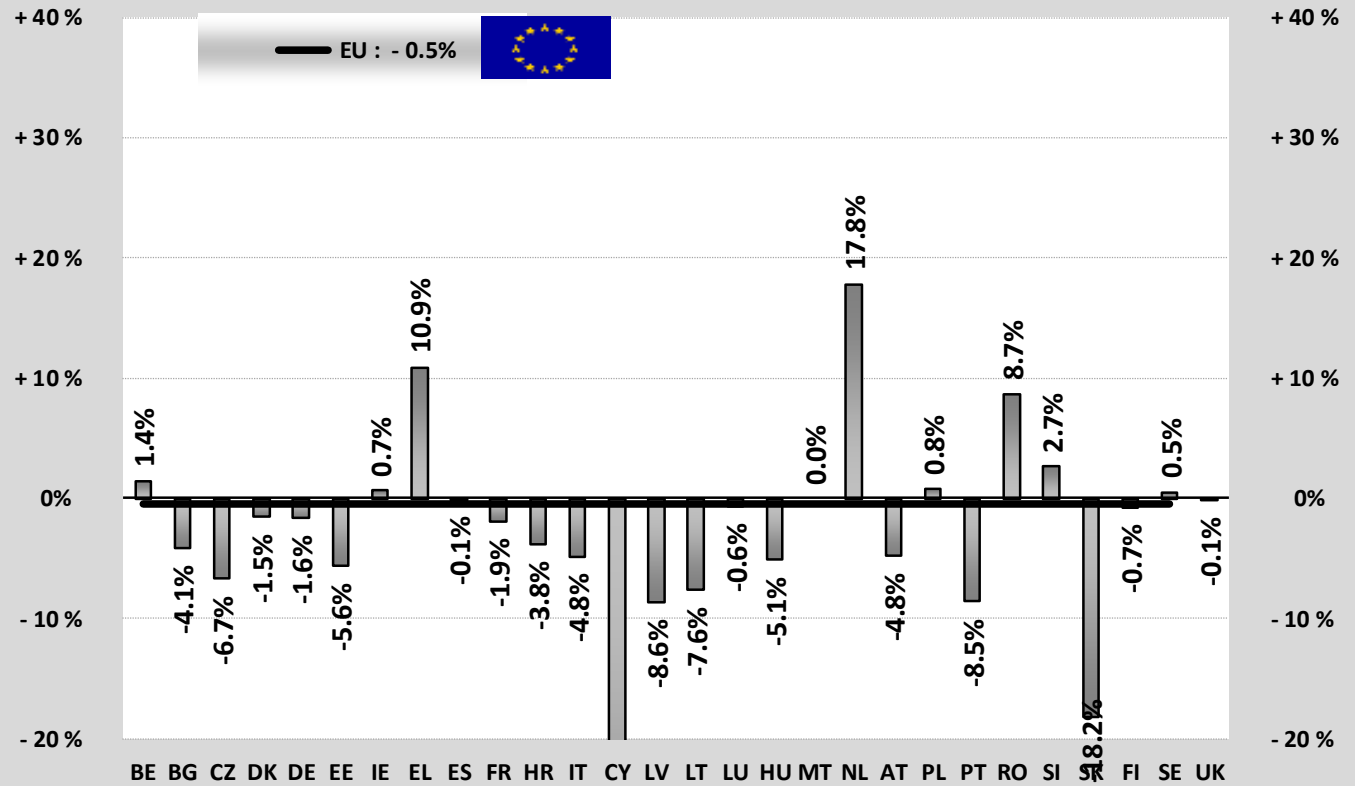


Source : MSs notifications (Regulation (EC) 807/2013)

TONNES	Jan-Feb 16/17	
	EU15	EU28
Bull	-3.4%	-2.9%
Bullock	-1.6%	-1.7%
Cow	+0.5%	+0.1%
Heifer	+0.9%	+1.1%
Calve	+4.2%	+4.1%
Young cattle	+0.4%	+0.6%
Meat of bovine animals	-0.4%	-0.5%

Estimates for last month :

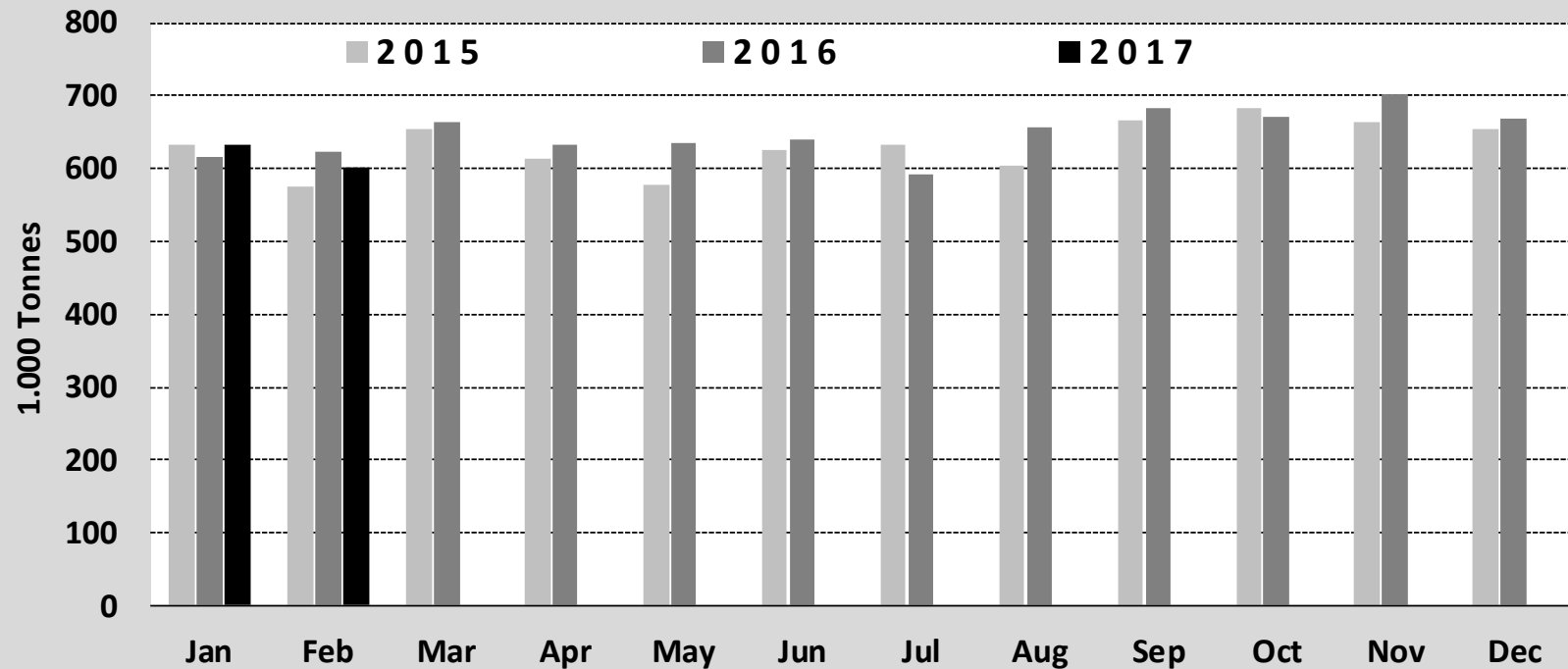
UK



Source : Eurostat

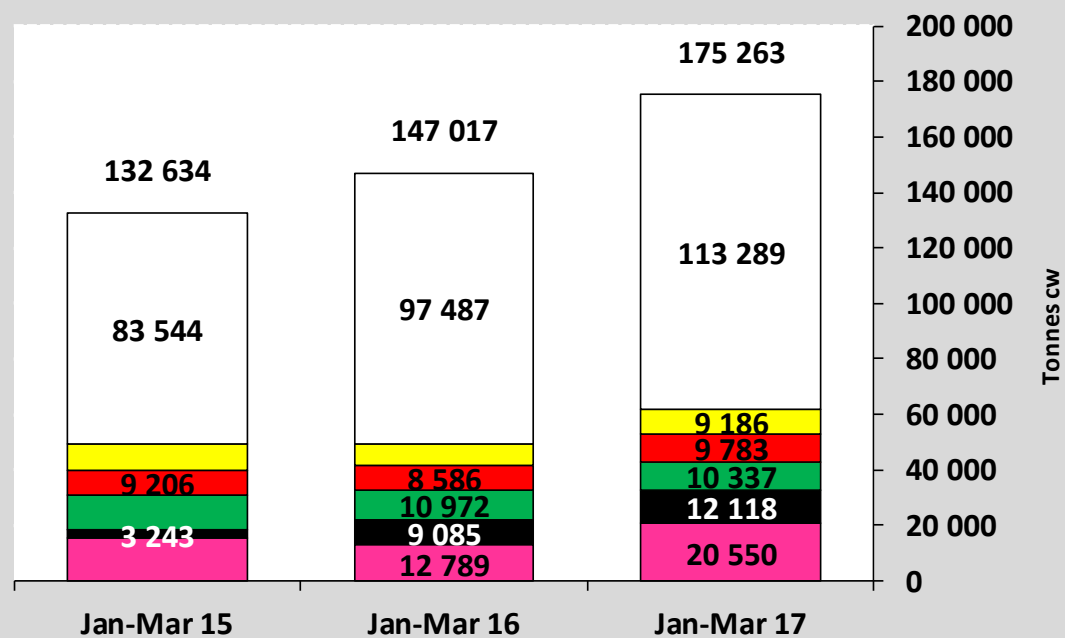


### Beef & Veal Production (E28 Slaughtering) - Tonnes



Source : Eurostat

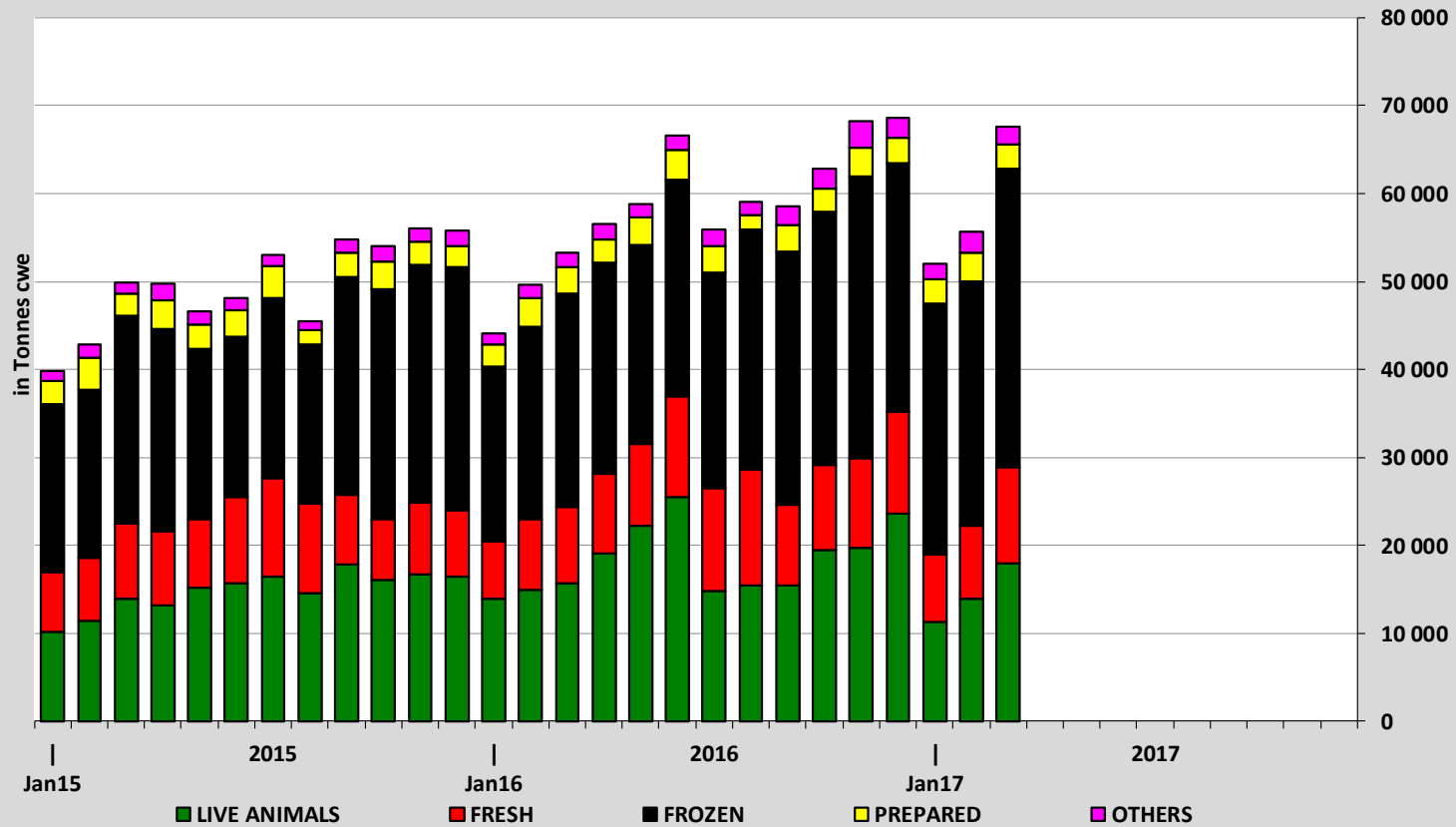
## EU EXPORTS of Beef & Veal (Tonnes cwe)



■ Hong Kong 
 ■ Israel 
 ■ Lebanon 
 ■ Ivory Coast 
 ■ Ghana 
 ■ Other destinations

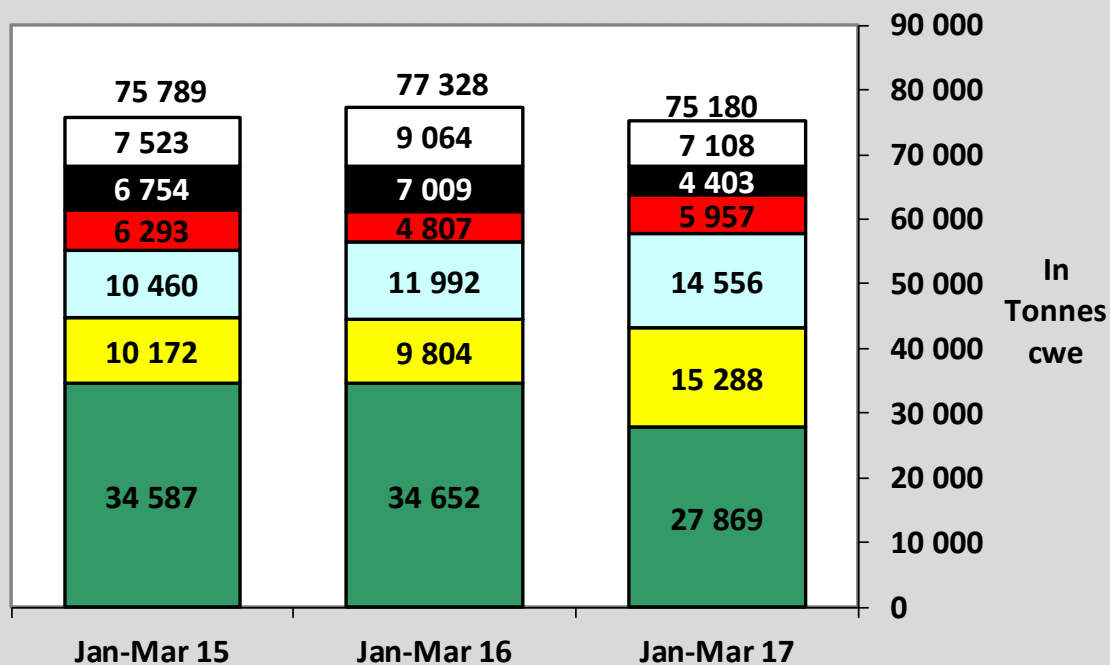
Source : Eurostat - Comext

## EU-28 Exports of BEEF products



Source : Eurostat - Comext

## IMPORTS of Beef & Veal into EU (Tonnes cwe)

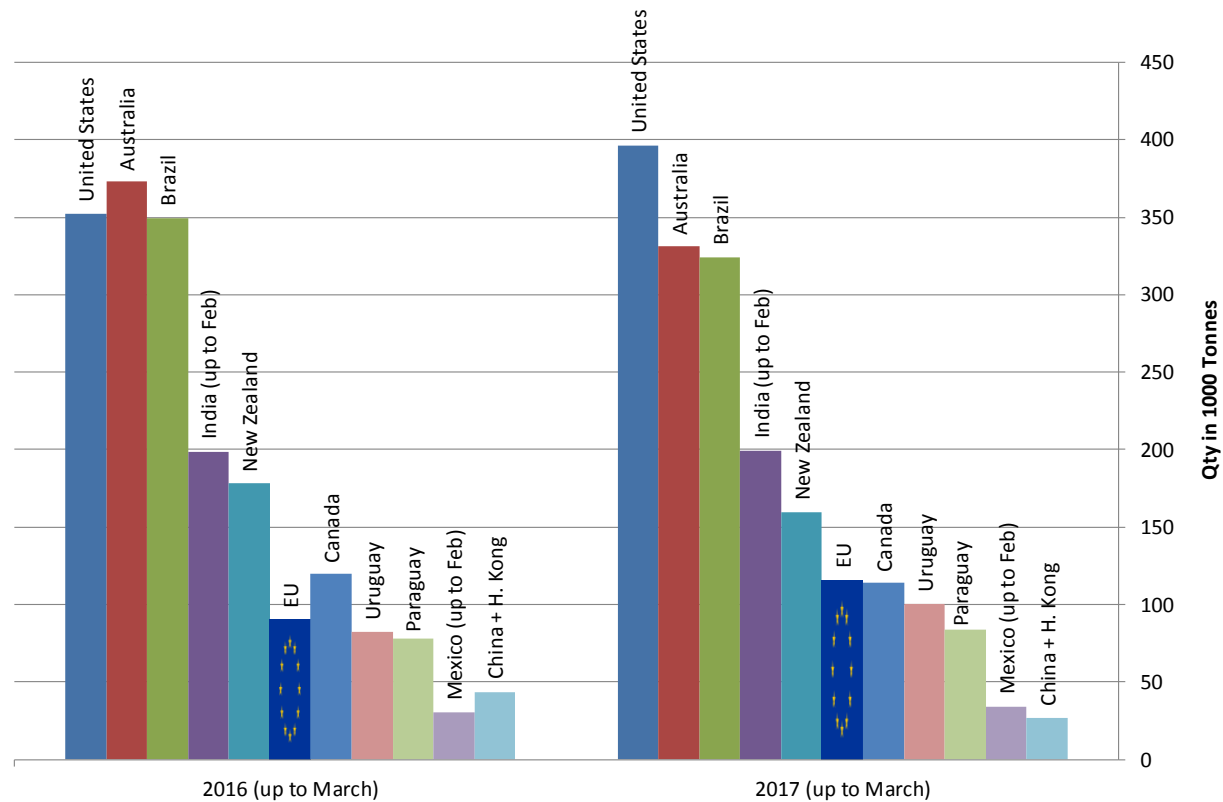


■ Brazil 
 ■ Argentina 
 ■ Uruguay 
 ■ USA 
 ■ Australia 
 ■ Other origins

Source : Eurostat - Comext

## Main Exporters of BEEF Products (up to March)

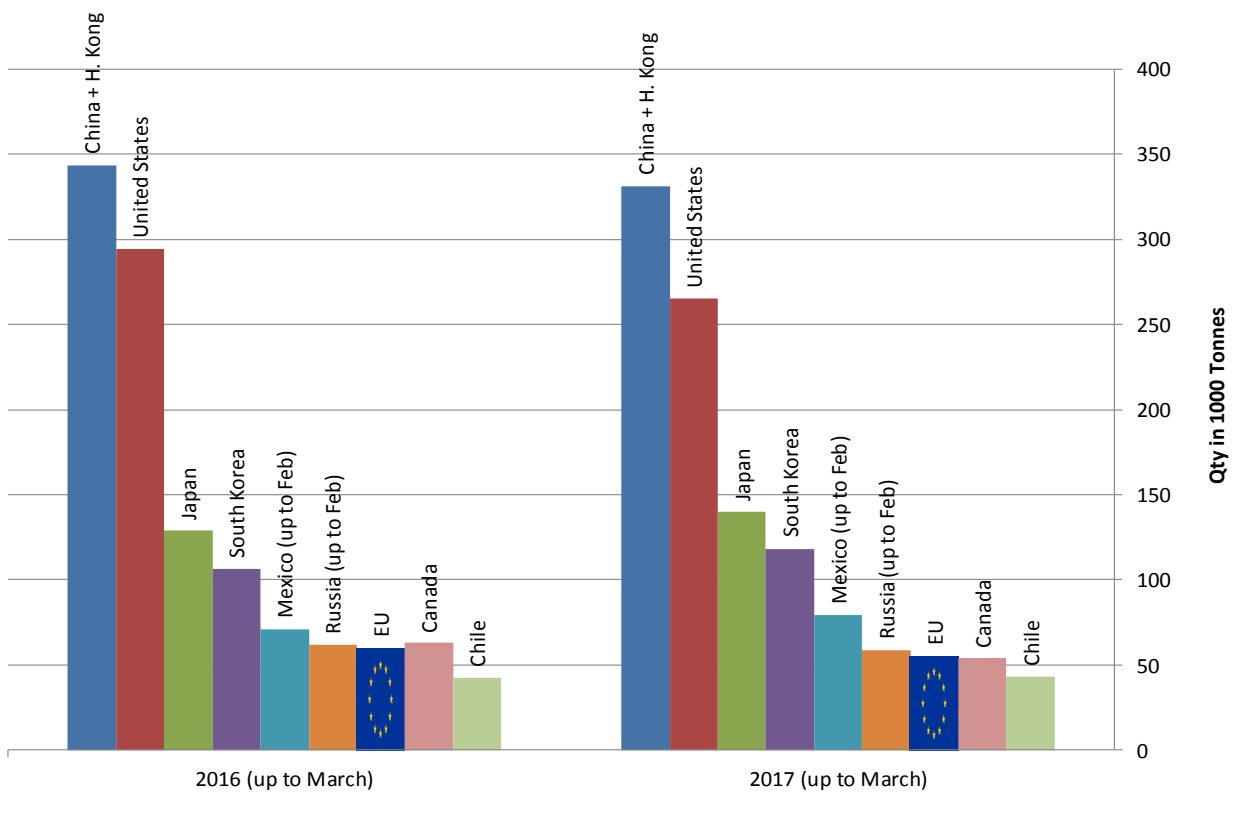
\* Excluding live animals (0102), fats, preparations of several types of meat (0209, 0210 99 and 1602 90)



Sources : Global Trade Information Services, Inc. and Eurostat - Comext

## Main Importers of BEEF Products (up to March)

\* Excluding live animals (0102), fats, preparations of several types of meat (0209, 0210 99 and 1602 90)



Sources : Global Trade Information Services, Inc. and Eurostat - Comext