

Prices

Carcasse

Live Animals

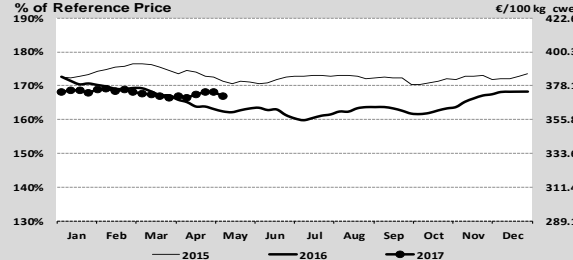
EU Prices week

19

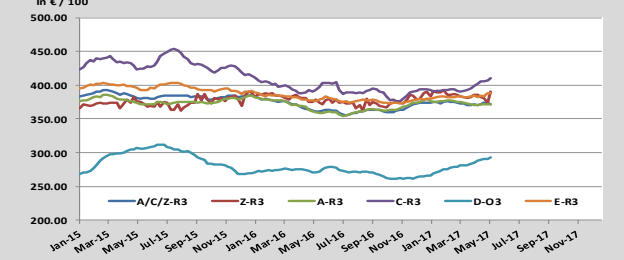
Evolution since last week Evolution since last month Evolution since last year

| Category | Price (€/100 kg) | Evolution since last week | Evolution since last month | Evolution since last year |
|------------------------------|------------------|---------------------------|----------------------------|---------------------------|
| Average A/C/Z-R3 | 371. | -0.7% | +0.3% | +2.7% |
| Young Bovines (Z) | 390. | +4.3% | +1.2% | +4.3% |
| Young Bulls (A) | 362. | -1.3% | -1.2% | +2.1% |
| Steers (C) | 414.4 | +0.7% | +2.4% | +4.4% |
| Cows (D) | 293.1 | +0.8% | +1.6% | +8.2% |
| Heifers (E) | 388.4 | +0.1% | +1.5% | +3.1% |
| Male Calves Dairy Type | 114.6 | +2.0% | +8.8% | +6.6% |
| Male Calves Beef Type | 226.8 | +2.3% | +3.7% | +2.3% |
| Young Store Cattle | 2.42 | -0.3% | +0.3% | +1.0% |
| Yearling Male Store Cattle | 2.32 | -0.5% | -0.8% | -0.0% |
| Yearling Female Store Cattle | 2.35 | -0.5% | -0.2% | +4.6% |
| Calves slaughtered <8M | 500. | -1.5% | -3.0% | -0.4% |

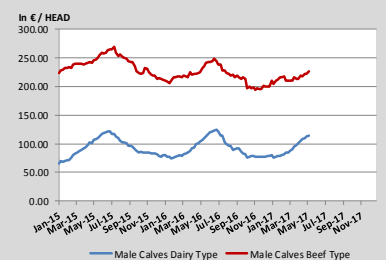
Average A/C/Z-R3 > Wk.19-2017



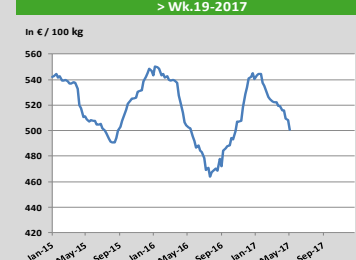
Average EU Bovine Carcasse Price by Category > Wk. 19-2017



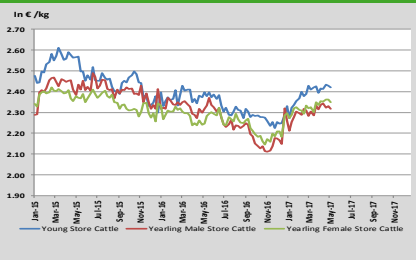
Average Male Calves Prices > Wk.19-2017



Average Prices of Calves Slaughtered before 8M > Wk.19-2017

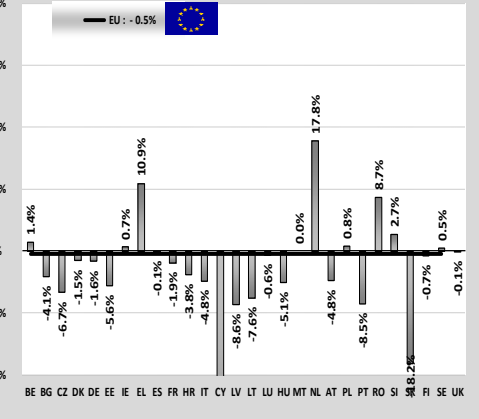


Average Store Cattle Prices > Wk.19-2017

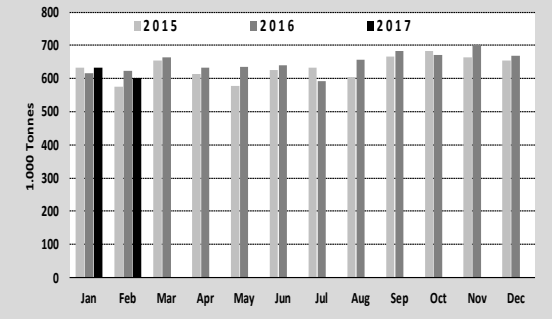


Production

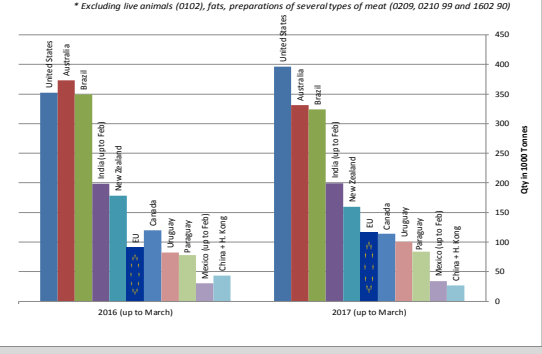
| Category | Jan-Feb 16/17 | |
|------------------------|---------------|-------|
| | EU15 | EU28 |
| Bull | -3.4% | -2.9% |
| Bullock | -1.6% | -1.7% |
| Cow | +0.5% | +0.1% |
| Heifer | +0.9% | +1.1% |
| Calve | +4.2% | +4.1% |
| Young cattle | +0.4% | +0.6% |
| Meat of bovine animals | -0.4% | -0.5% |



Beef & Veal Production (E28 Slaughtering) - Tonnes

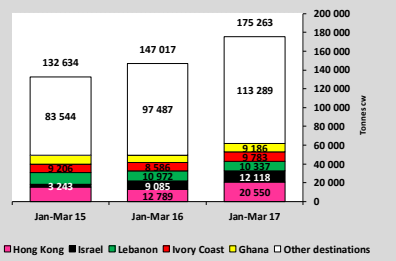


Main Exporters of BEEF Products (up to March)

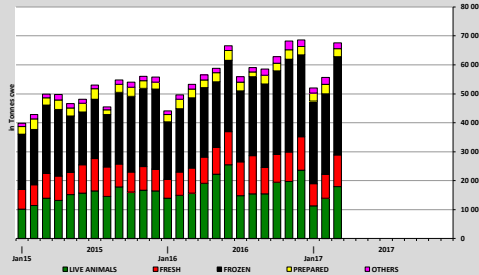


Trade

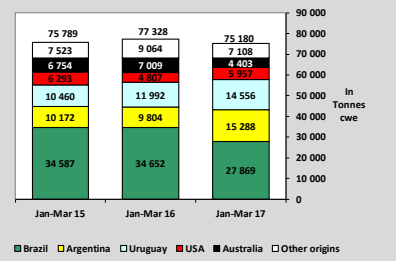
EU EXPORTS of Beef & Veal (Tonnes cwe)



EU-28 Exports of BEEF products

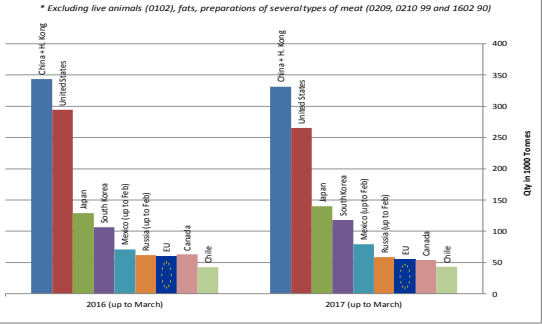


IMPORTS of Beef & Veal into EU (Tonnes cwe)



World Trade

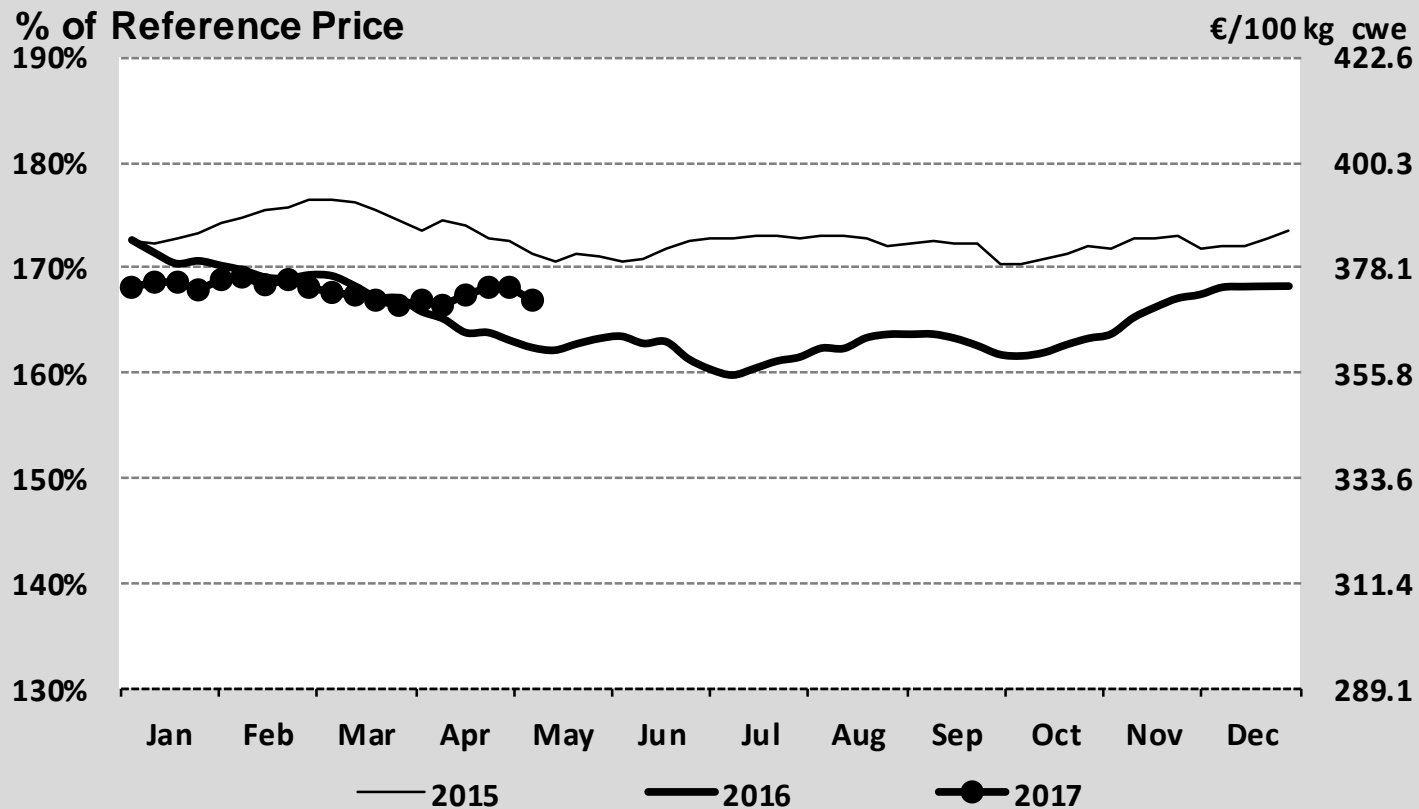
Main Importers of BEEF Products (up to March)



| EU Prices week | | 19 | Evolution since last week | Evolution since last month | Evolution since last year |
|---------------------|------------------------------|-------|---------------------------|----------------------------|---------------------------|
| Carcasse | Average A/C/Z-R3 | 371. | - 0.7% | + 0.3% | + 2.7% |
| | Young Bovines (Z) | 390. | + 4.3% | + 1.2% | + 4.3% |
| | Young Bulls (A) | 362. | - 1.3% | - 1.2% | + 2.1% |
| | Steers (C) | 414.4 | + 0.7% | + 2.4% | + 4.4% |
| | Cows (D) | 293.1 | + 0.8% | + 1.6% | + 8.2% |
| | Heifers (E) | 388.4 | + 0.1% | + 1.5% | + 3.1% |
| Live Animals | Male Calves Dairy Type | 114.6 | + 2.0% | + 8.8% | + 6.6% |
| | Male Calves Beef Type | 226.8 | + 2.3% | + 3.7% | + 2.3% |
| | Young Store Cattle | 2.42 | - 0.3% | + 0.3% | + 1.0% |
| | Yearling Male Store Cattle | 2.32 | - 0.5% | - 0.8% | - 0.0% |
| | Yearling Female Store Cattle | 2.35 | - 0.5% | - 0.2% | + 4.6% |
| | Calves slaughtered <8M | 500. | - 1.5% | - 3.0% | - 0.4% |

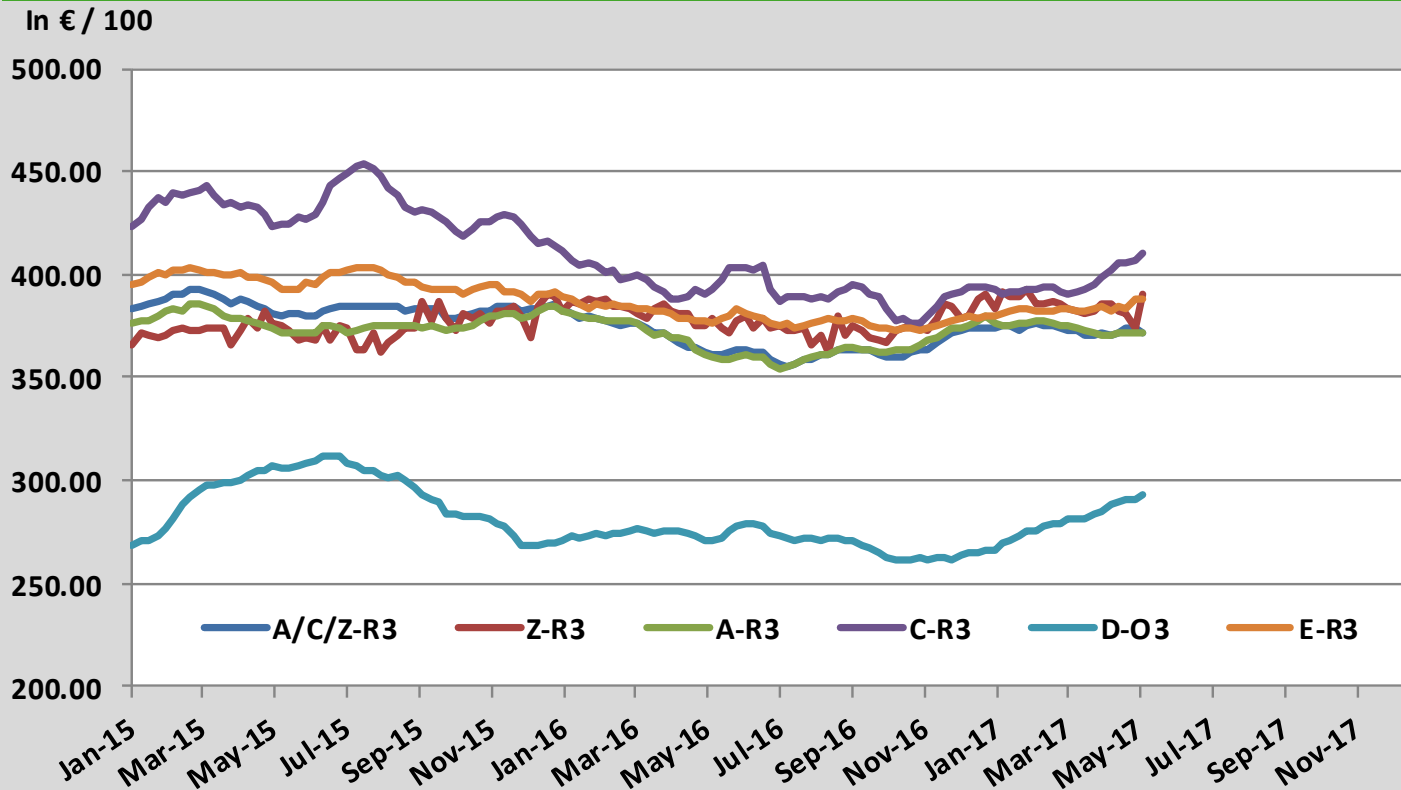
Sources : MSs notifications (Regulation (EC) 1249/2008 and 807/2013)

Average A/C/Z -R3 > Wk.19-2017



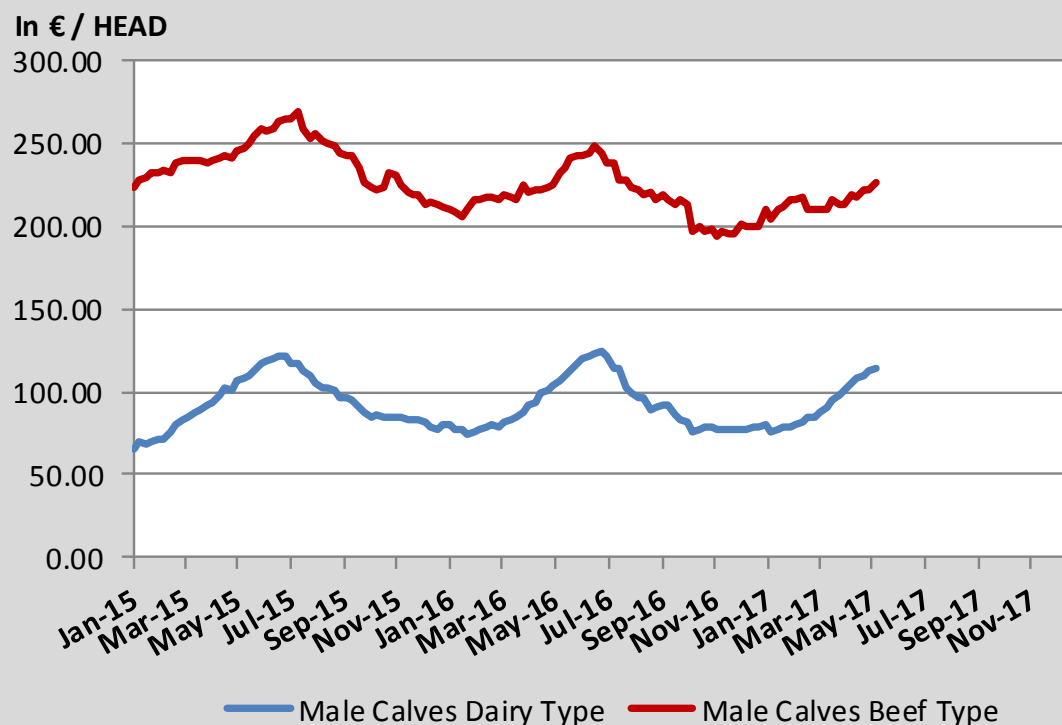
Source : MSs notifications (Regulation (EC) 1249/2008)

Average EU Bovine Carcasse Price by Category > Wk 19-2017



Source : MSs notifications (Regulation (EC) 1249/2008)

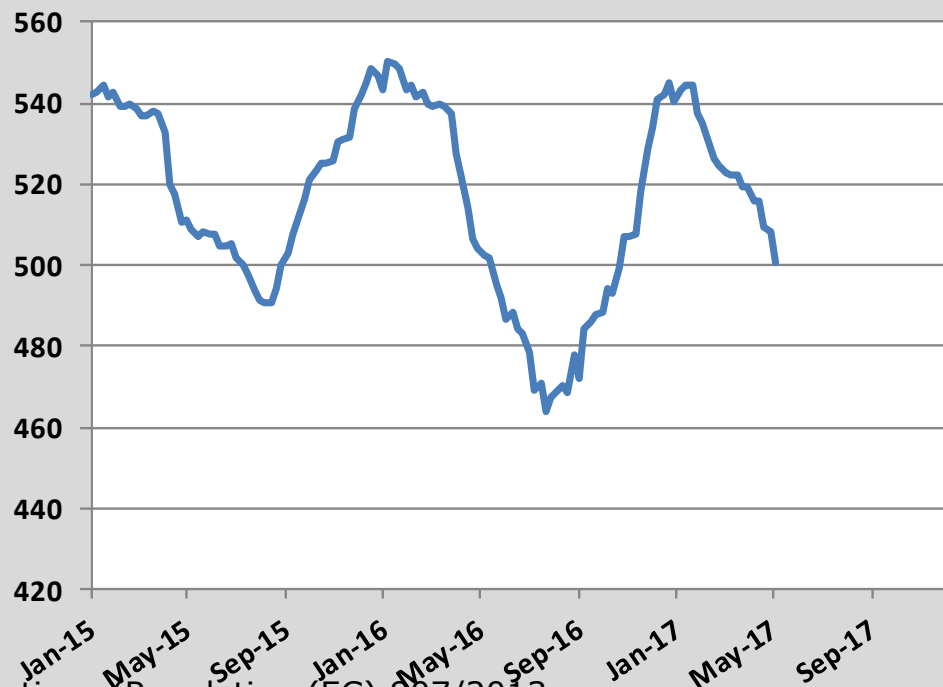
Average Male Calves Prices > Wk.19-2017



Source : MSs notifications (Regulation (EC) 807/2013)

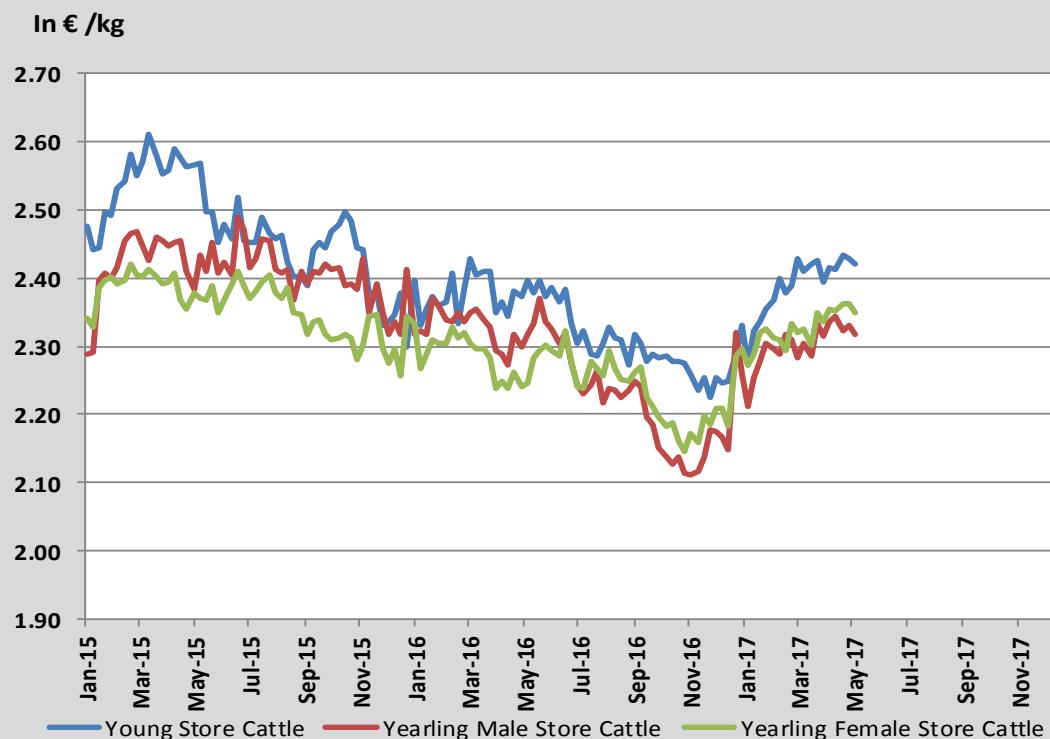
Average Prices of Calves Slaughtered before 8M > Wk.19-2017

In € / 100 kg



Source : MSs notifications (Regulation (EC) 807/2013)

Average Store Cattle Prices > Wk.19-2017

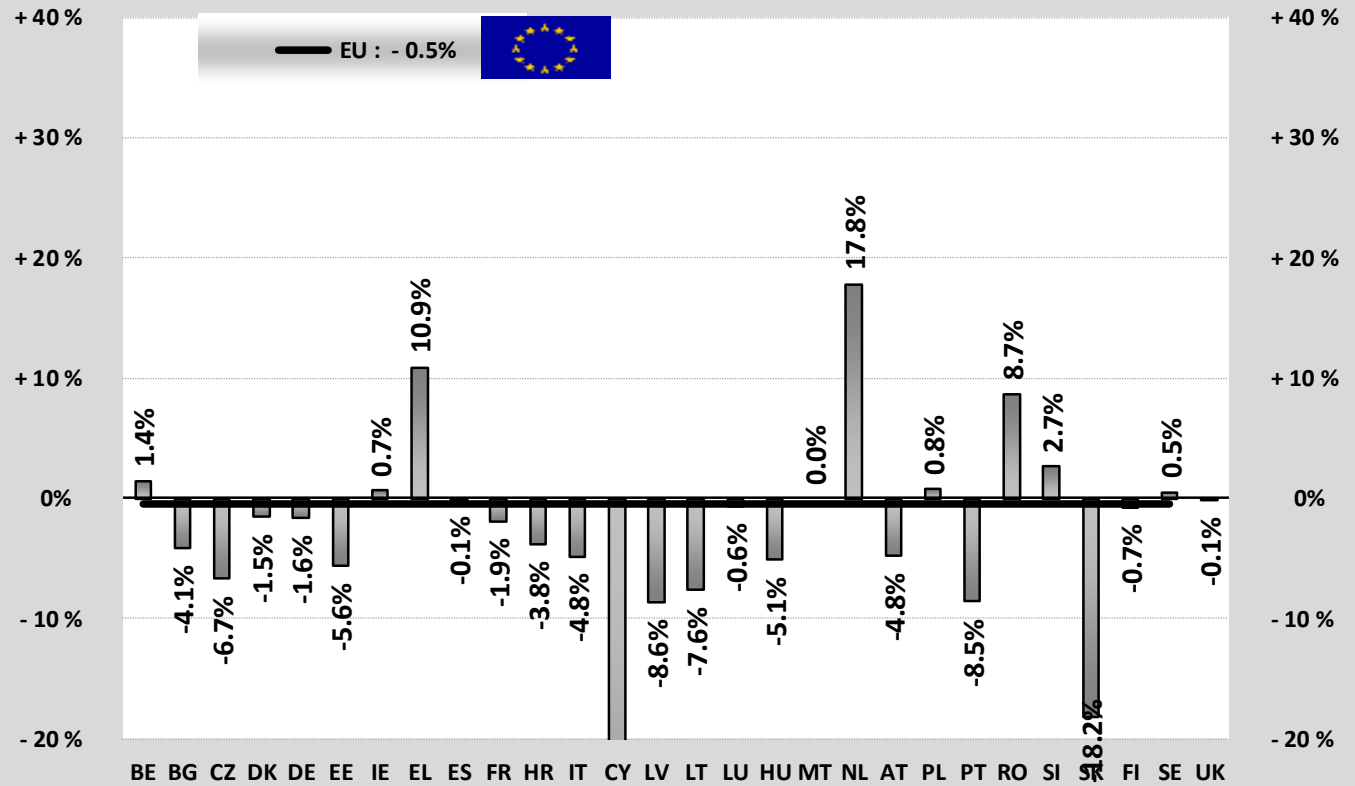


Source : MSs notifications (Regulation (EC) 807/2013)

| TONNES | Jan-Feb 16/17 | |
|------------------------|---------------|-------|
| | EU15 | EU28 |
| Bull | -3.4% | -2.9% |
| Bullock | -1.6% | -1.7% |
| Cow | +0.5% | +0.1% |
| Heifer | +0.9% | +1.1% |
| Calve | +4.2% | +4.1% |
| Young cattle | +0.4% | +0.6% |
| Meat of bovine animals | -0.4% | -0.5% |

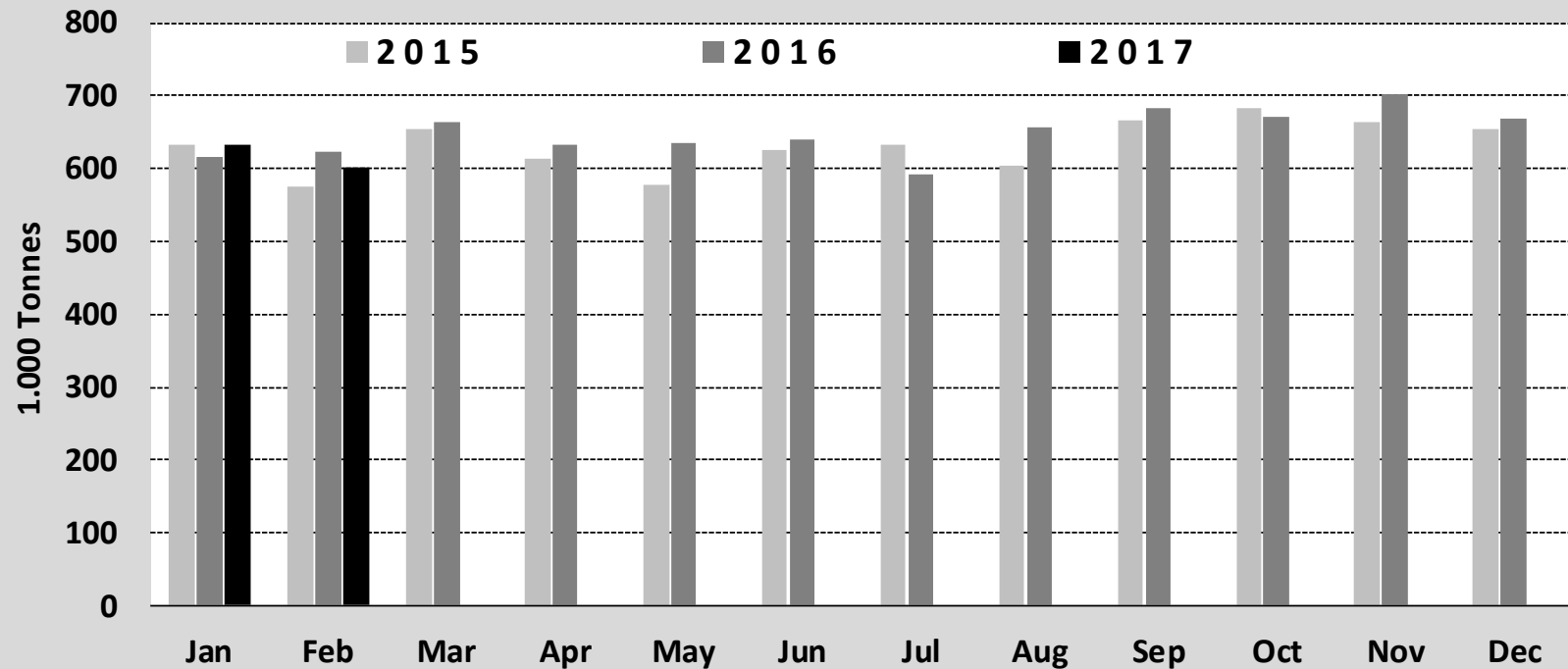
Estimates for last month :

UK



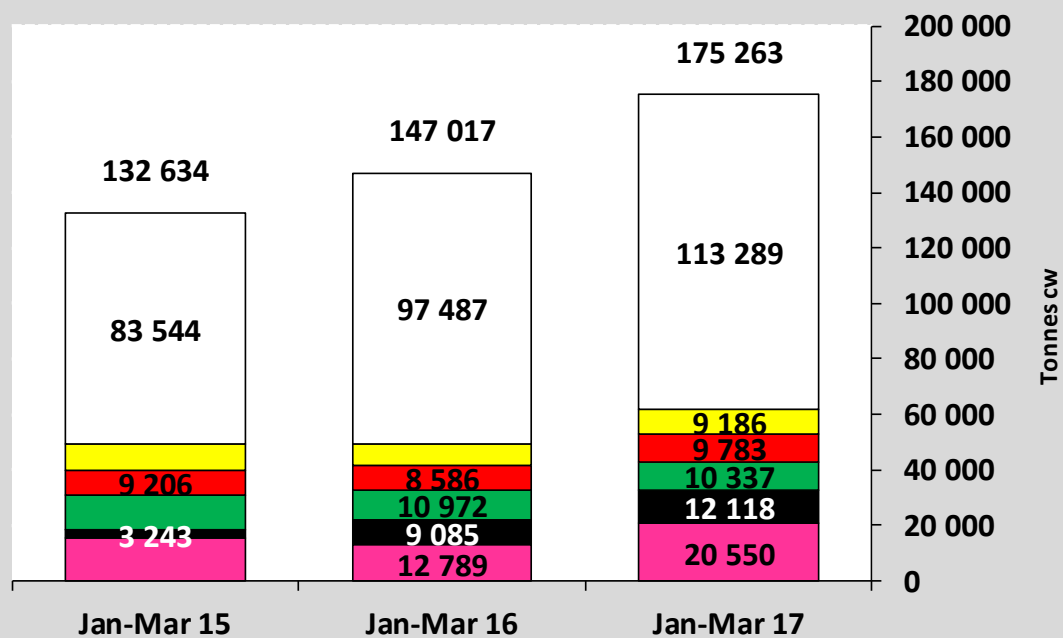
Source : Eurostat

Beef & Veal Production (E28 Slaughtering) - Tonnes



Source : Eurostat

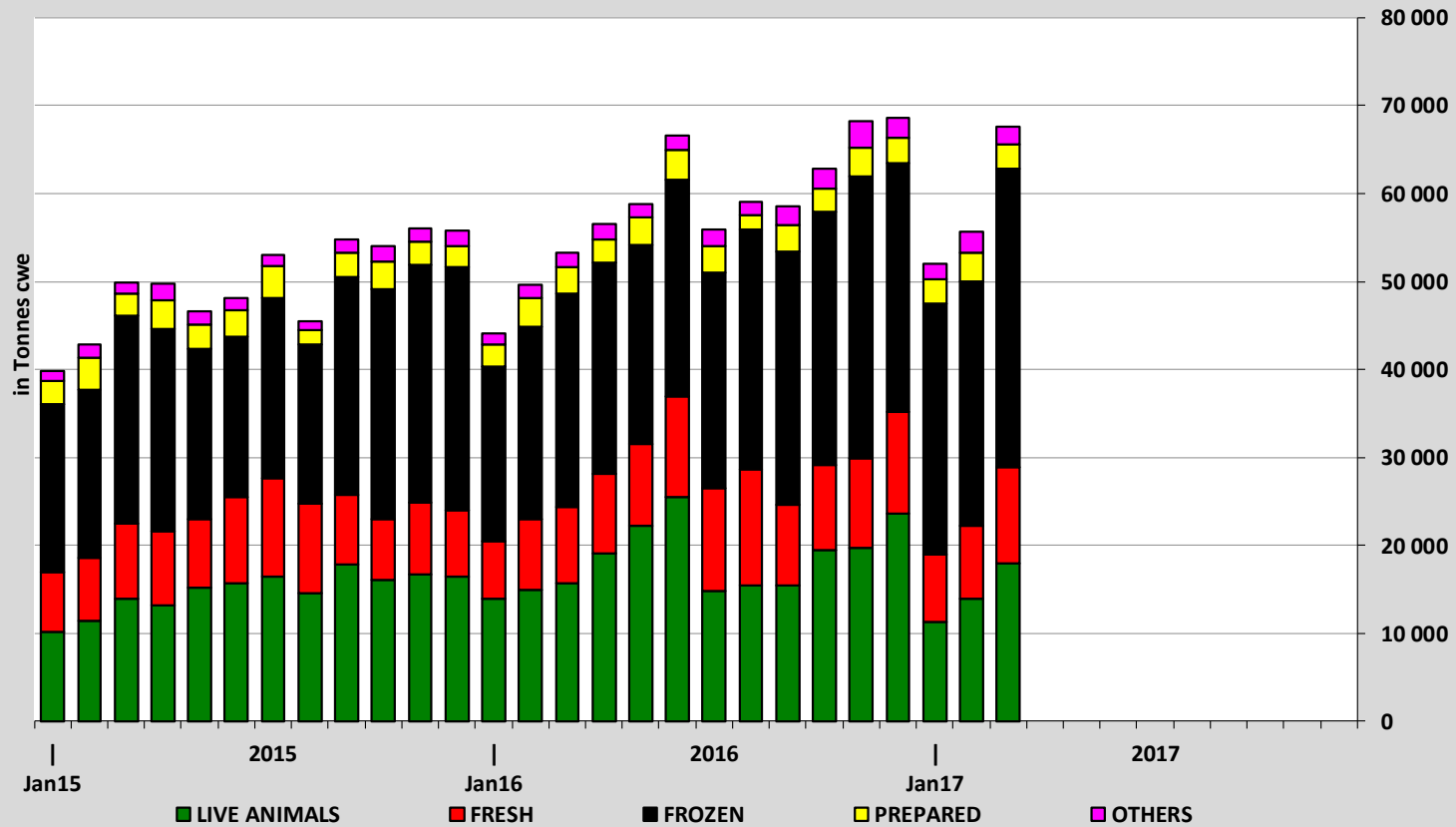
EU EXPORTS of Beef & Veal (Tonnes cwe)



■ Hong Kong
 ■ Israel
 ■ Lebanon
 ■ Ivory Coast
 ■ Ghana
 ■ Other destinations

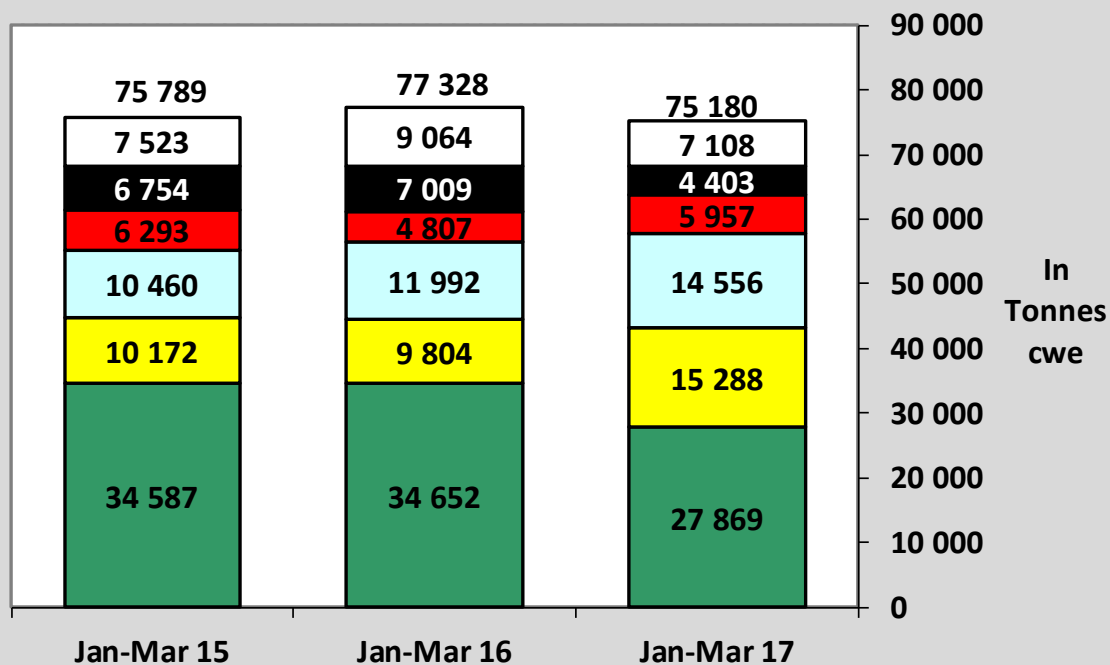
Source : Eurostat - Comext

EU-28 Exports of BEEF products



Source : Eurostat - Comext

IMPORTS of Beef & Veal into EU (Tonnes cwe)

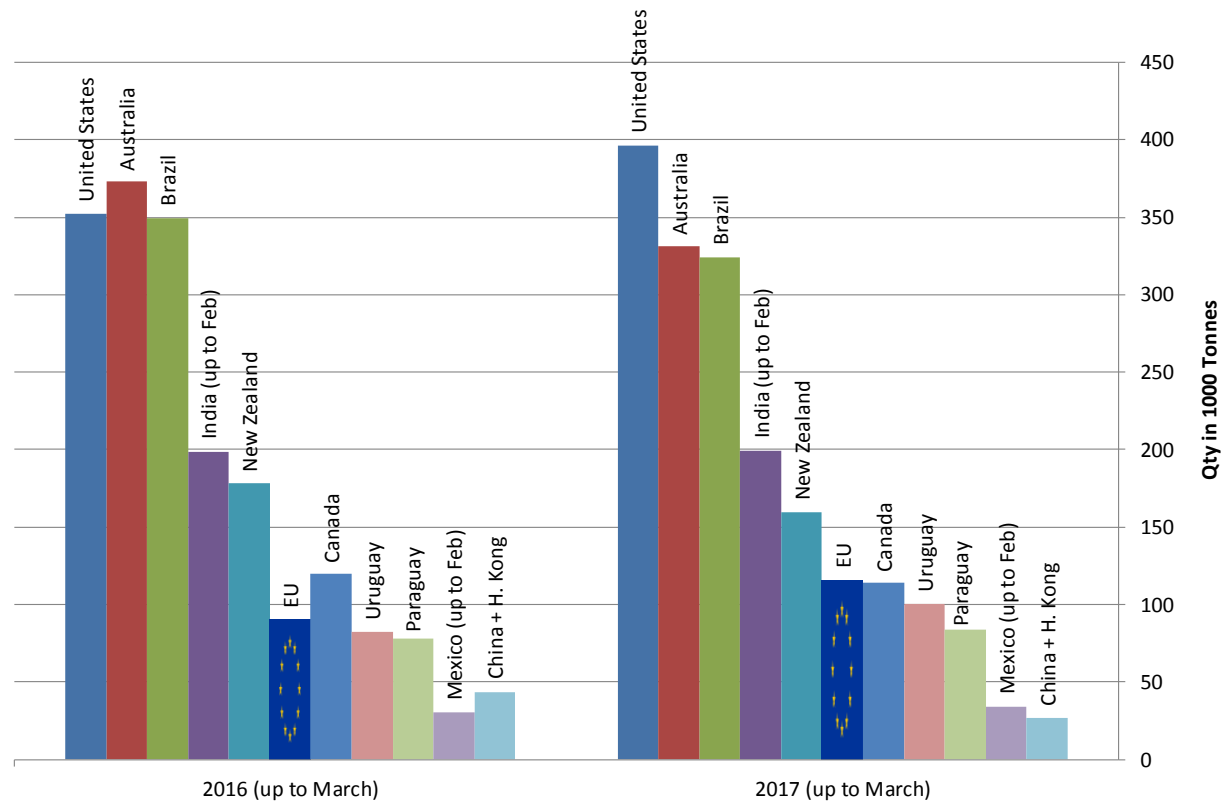


■ Brazil
 ■ Argentina
 ■ Uruguay
 ■ USA
 ■ Australia
 ■ Other origins

Source : Eurostat - Comext

Main Exporters of BEEF Products (up to March)

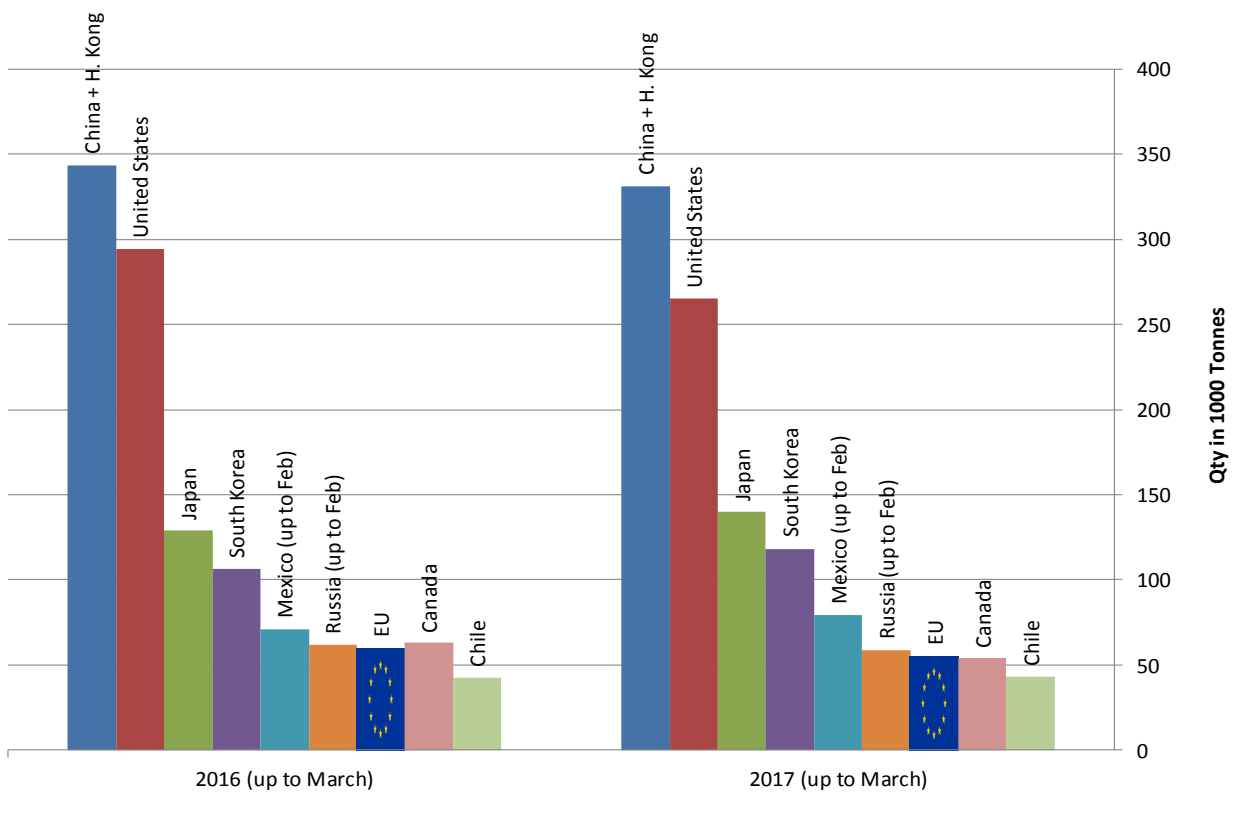
* Excluding live animals (0102), fats, preparations of several types of meat (0209, 0210 99 and 1602 90)



Sources : Global Trade Information Services, Inc. and Eurostat - Comext

Main Importers of BEEF Products (up to March)

* Excluding live animals (0102), fats, preparations of several types of meat (0209, 0210 99 and 1602 90)



Sources : Global Trade Information Services, Inc. and Eurostat - Comext