

Prices

Carcasse

Live Animals

EU Prices week

24

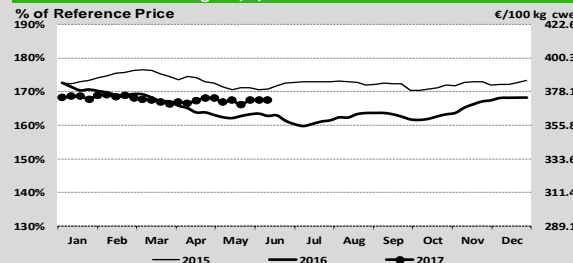
Evolution since last week

Evolution since last month

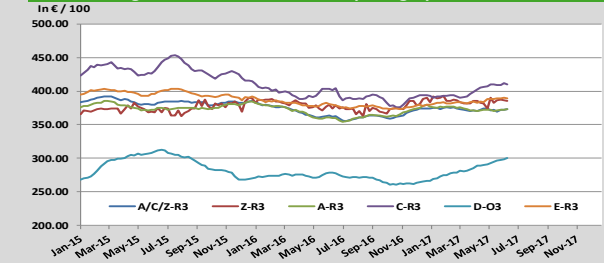
Evolution since last year

Category	Price (€/100 kg)	Evolution since last week	Evolution since last month	Evolution since last year
Average A/C/Z-R3	372.	-0.1%	+0.1%	+3.0%
Young Bovines (Z)	385.	-0.1%	+0.7%	-0.1%
Young Bulls (A)	366.	+0.1%	-0.0%	+3.1%
Steers (C)	412.6	-0.2%	-0.2%	+1.4%
Cows (D)	300.3	+0.5%	+1.8%	+7.8%
Heifers (E)	389.5	-0.1%	+0.4%	+2.6%
Male Calves Dairy Type	129.7	+0.9%	+10.9%	+7.0%
Male Calves Beef Type	240.1	+0.5%	+4.2%	+0.5%
Young Store Cattle	2.37	-0.1%	-0.7%	+0.3%
Yearling Male Store Cattle	2.30	-0.5%	-2.2%	-0.2%
Yearling Female Store Cattle	2.34	-0.2%	+1.4%	+2.3%
Calves slaughtered <8M	500.	+0.3%	-0.2%	+2.5%

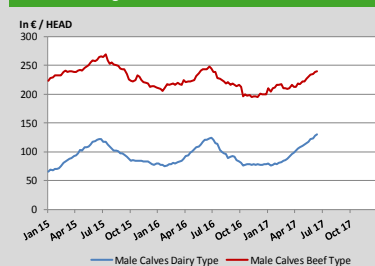
Average A/C/Z-R3 > Wk.24-2017



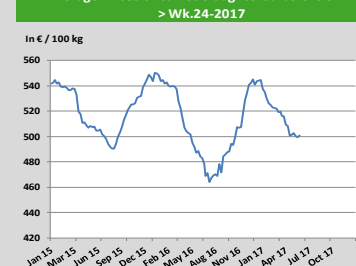
Average EU Bovine Carcasse Price by Category > Wk. 24-2017



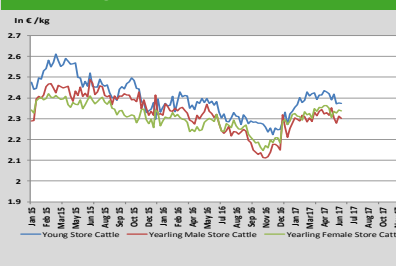
Average Male Calves Prices > Wk.24-2017



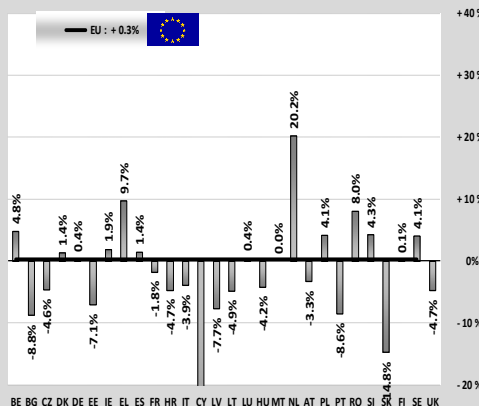
Average Prices of Calves Slaughtered before 8M > Wk.24-2017



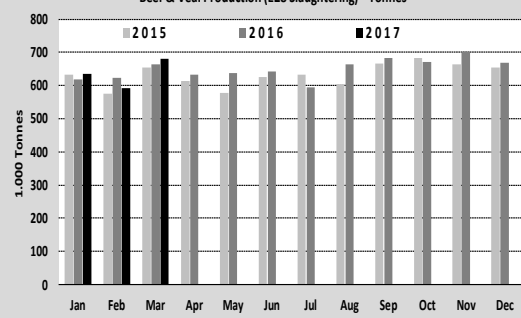
Average Store Cattle Prices > Wk.24-2017



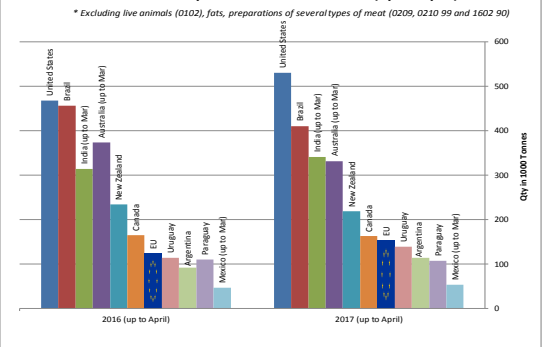
Category	Jan-Mar 16/17	EU15	EU28
Bull	-2.7%	-2.0%	-2.0%
Bullock	-3.4%	-3.4%	-3.4%
Cow	+1.5%	+1.3%	+1.3%
Heifer	+0.5%	+1.1%	+1.1%
Calve	+3.0%	+2.8%	+2.8%
Young cattle	+2.8%	+2.9%	+2.9%
Meat of bovine animals	+0.1%	+0.3%	+0.3%



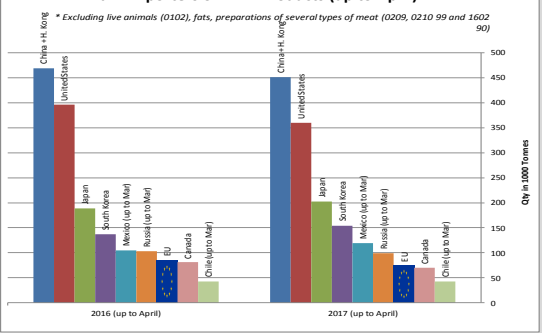
Beef & Veal Production (E28 Slaughtering) - Tonnes



Main Exporters of BEEF Products (up to April)



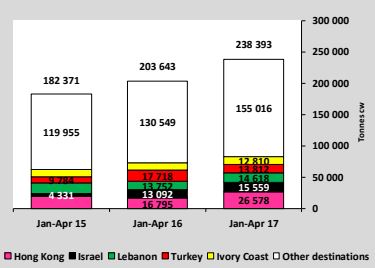
Main Importers of BEEF Products (up to April)



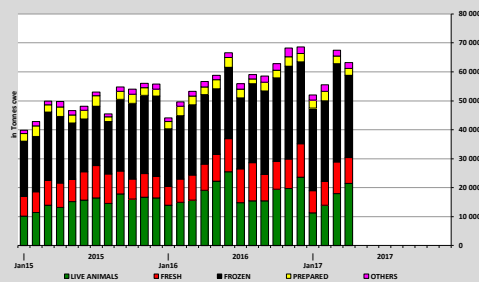
Production

Trade

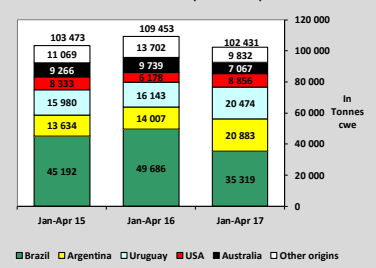
EU EXPORTS of Beef & Veal (Tonnes cwe)



EU-28 Exports of BEEF products



IMPORTS of Beef & Veal into EU (Tonnes cwe)

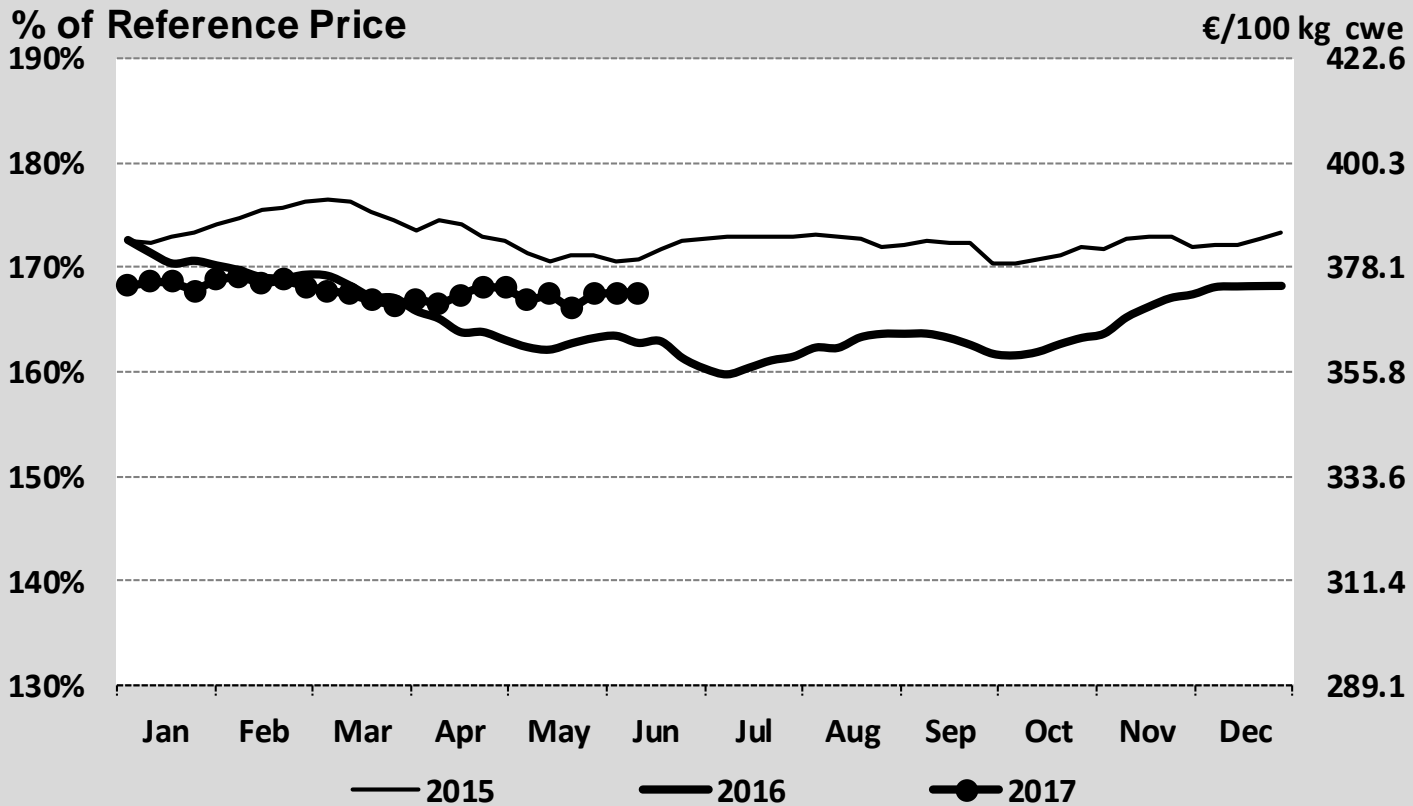


World Trade

EU Prices week		24	Evolution since last week	Evolution since last month	Evolution since last year
Carcasse	Average A/C/Z-R3	372.	- 0.1%	+ 0.1%	+ 3.0%
	Young Bovines (Z)	385.	- 0.1%	+ 0.7%	- 0.1%
	Young Bulls (A)	366.	+ 0.1%	- 0.0%	+ 3.1%
	Steers (C)	412.6	- 0.2%	- 0.2%	+ 1.4%
	Cows (D)	300.3	+ 0.5%	+ 1.8%	+ 7.8%
	Heifers (E)	389.5	- 0.1%	+ 0.4%	+ 2.6%
Live Animals	Male Calves Dairy Type	129.7	+ 0.9%	+ 10.9%	+ 7.0%
	Male Calves Beef Type	240.1	+ 0.5%	+ 4.2%	+ 0.5%
	Young Store Cattle	2.37	- 0.1%	- 0.7%	+ 0.3%
	Yearling Male Store Cattle	2.30	- 0.5%	- 2.2%	- 0.2%
	Yearling Female Store Cattle	2.34	- 0.2%	+ 1.4%	+ 2.3%
	Calves slaughtered <8M	500.	+ 0.3%	- 0.2%	+ 2.5%

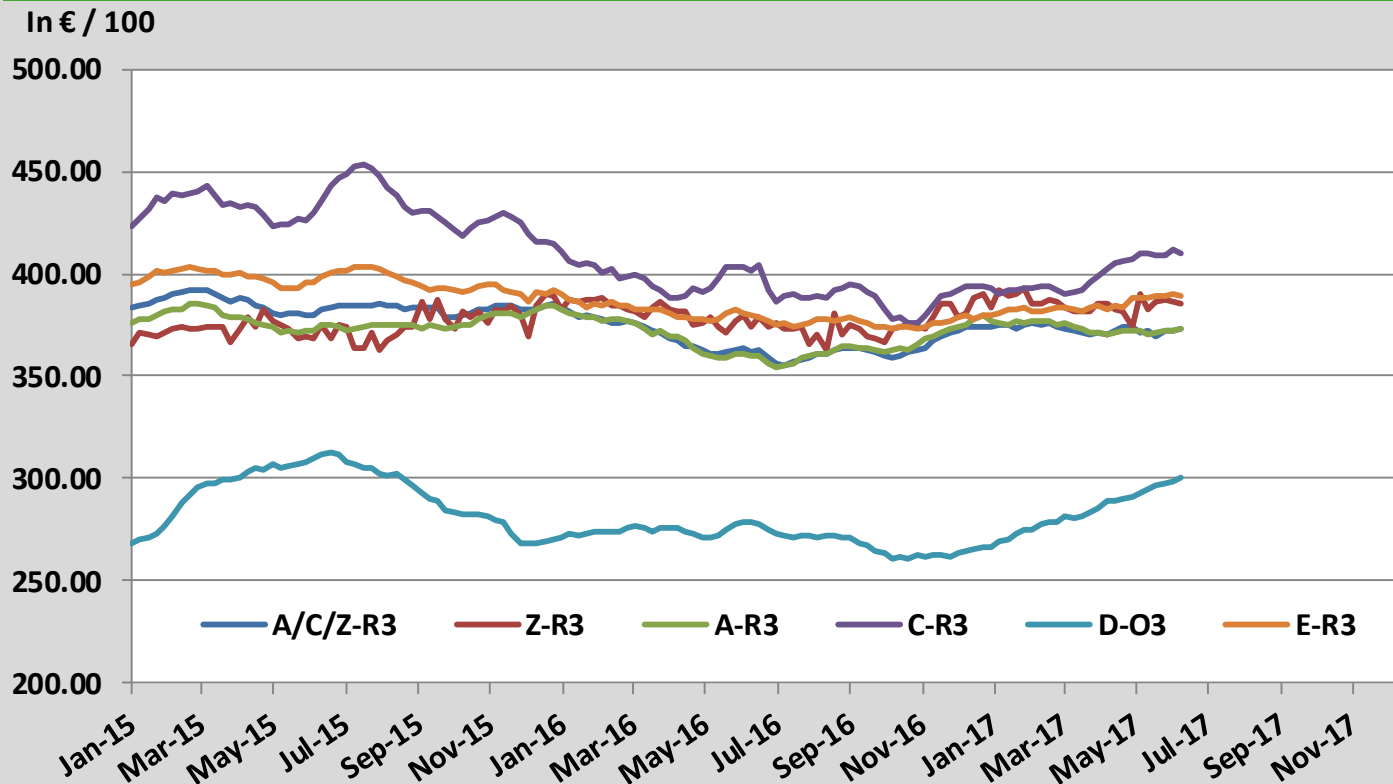
Sources : MSs notifications (Regulation (EC) 1249/2008 and 807/2013)

Average A/C/Z -R3 > Wk.24-2017



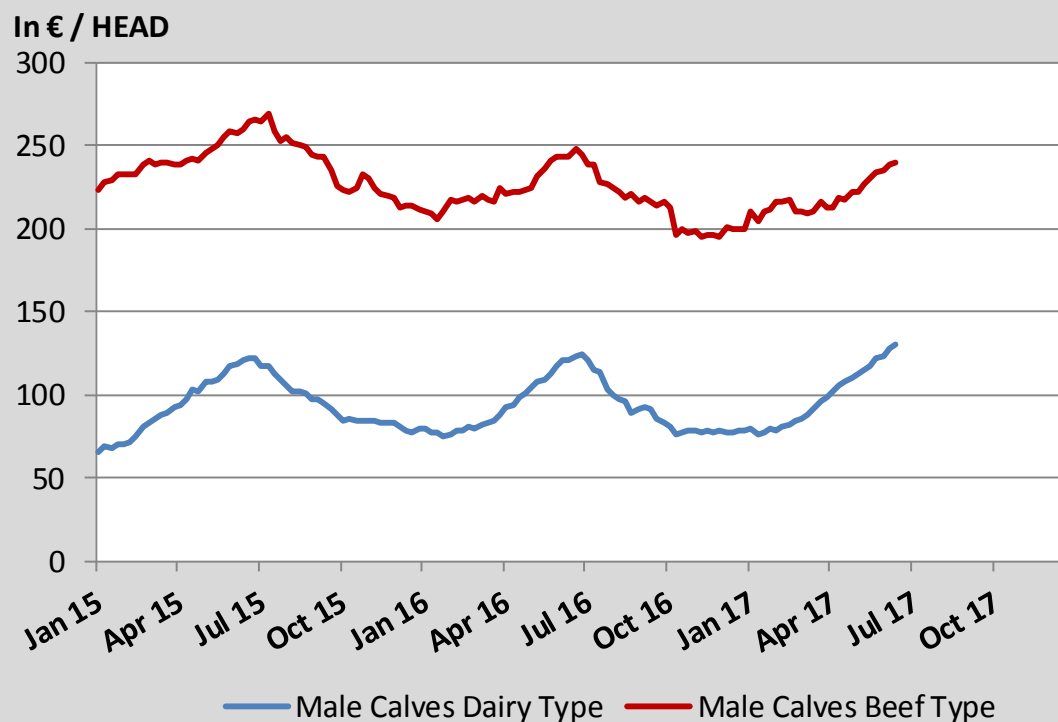
Source : MSs notifications (Regulation (EC) 1249/2008)

Average EU Bovine Carcasse Price by Category > Wk 24-2017



Source : MSs notifications (Regulation (EC) 1249/2008)

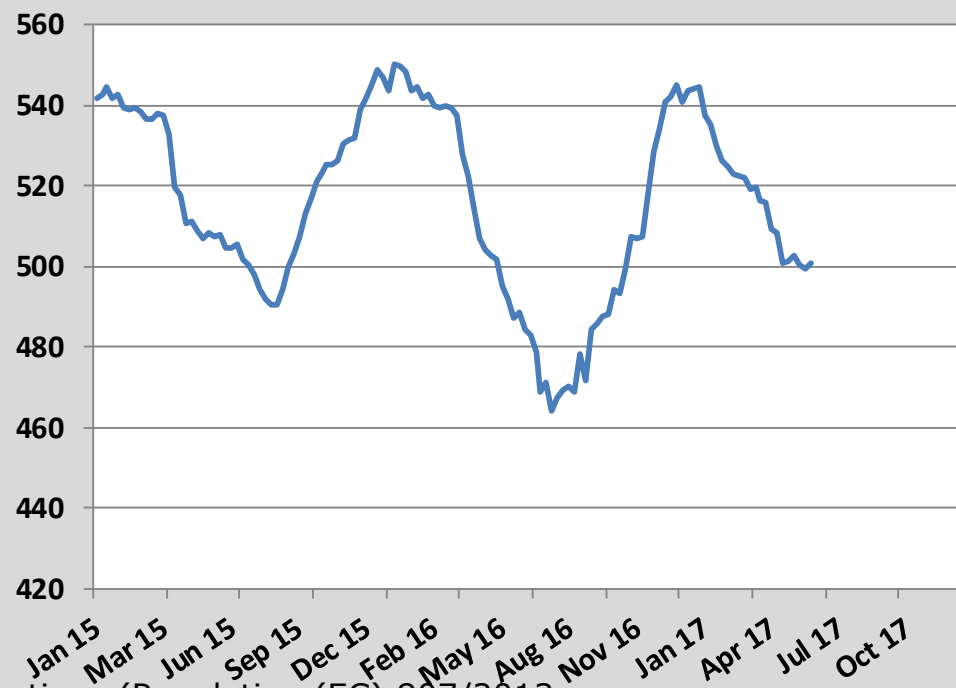
Average Male Calves Prices > Wk.24-2017



Source : MSs notifications (Regulation (EC) 807/2013)

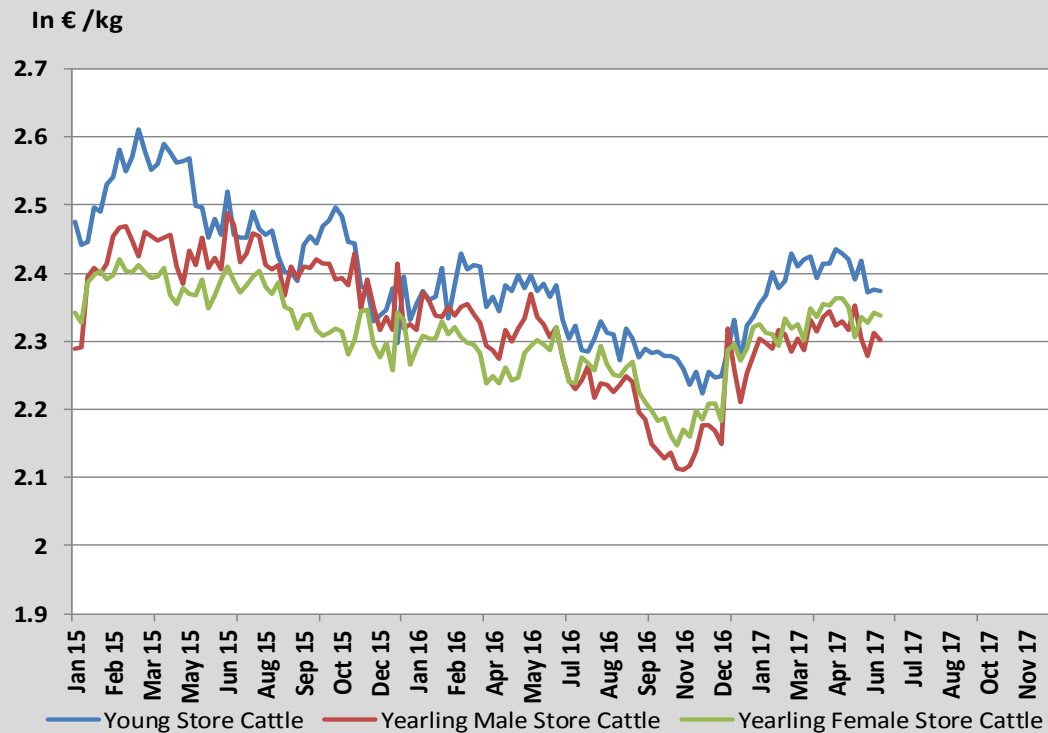
Average Prices of Calves Slaughtered before 8M > Wk.24-2017

In € / 100 kg



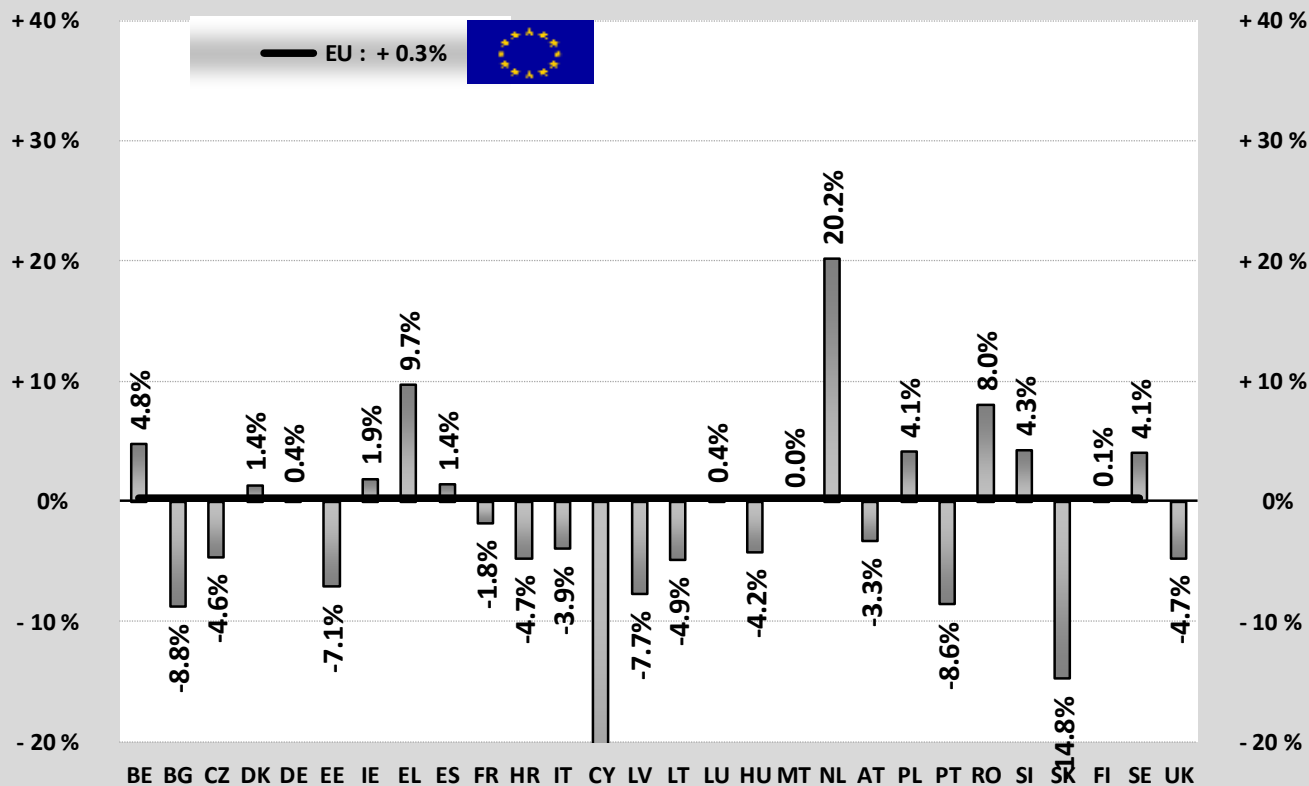
Source : MSs notifications (Regulation (EC) 807/2013)

Average Store Cattle Prices > Wk.24-2017



Source : MSs notifications (Regulation (EC) 807/2013)

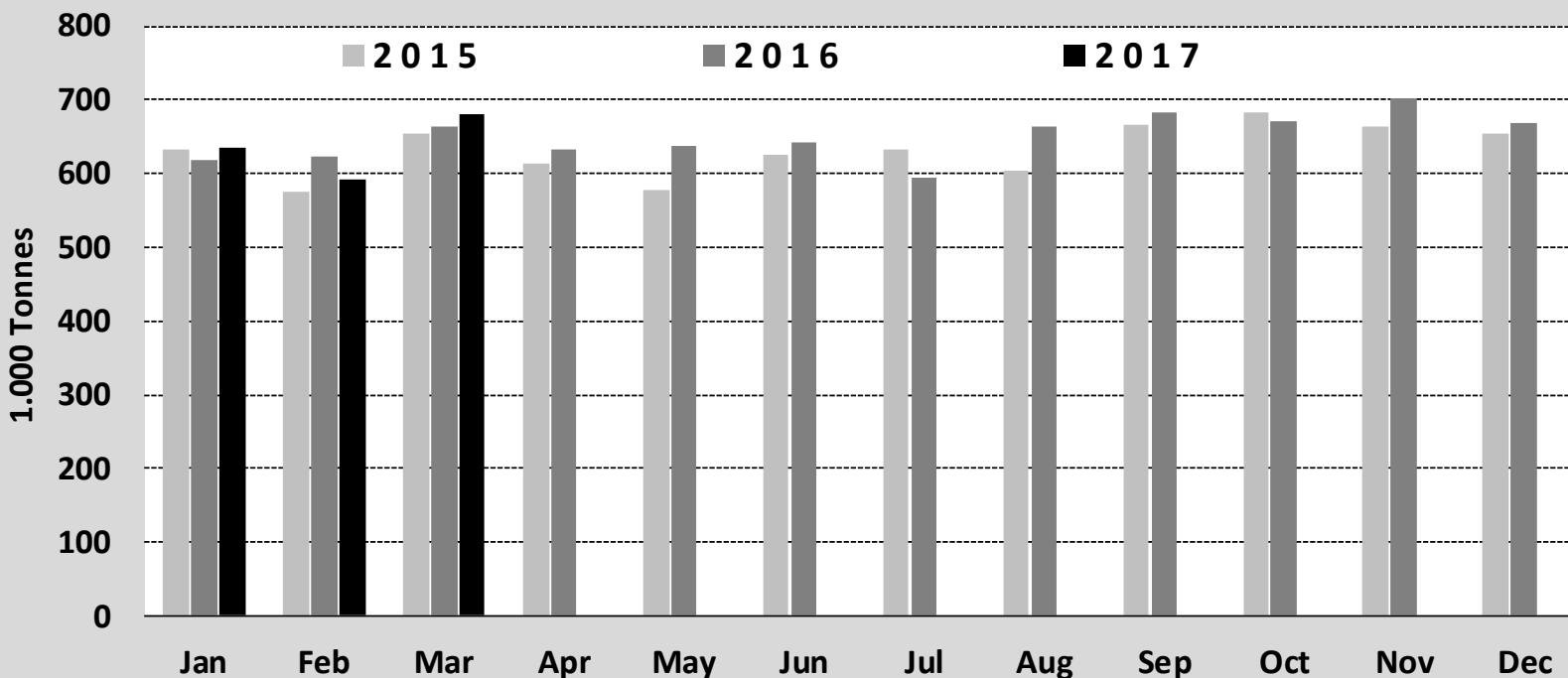
TONNES	Jan-Mar 16/17	
	EU15	EU28
Bull	-2.7%	-2.0%
Bullock	-3.4%	-3.4%
Cow	+1.5%	+1.3%
Heifer	+0.5%	+1.1%
Calve	+3.0%	+2.8%
Young cattle	+2.8%	+2.9%
Meat of bovine animals	+0.1%	+0.3%



Estimates for last month :

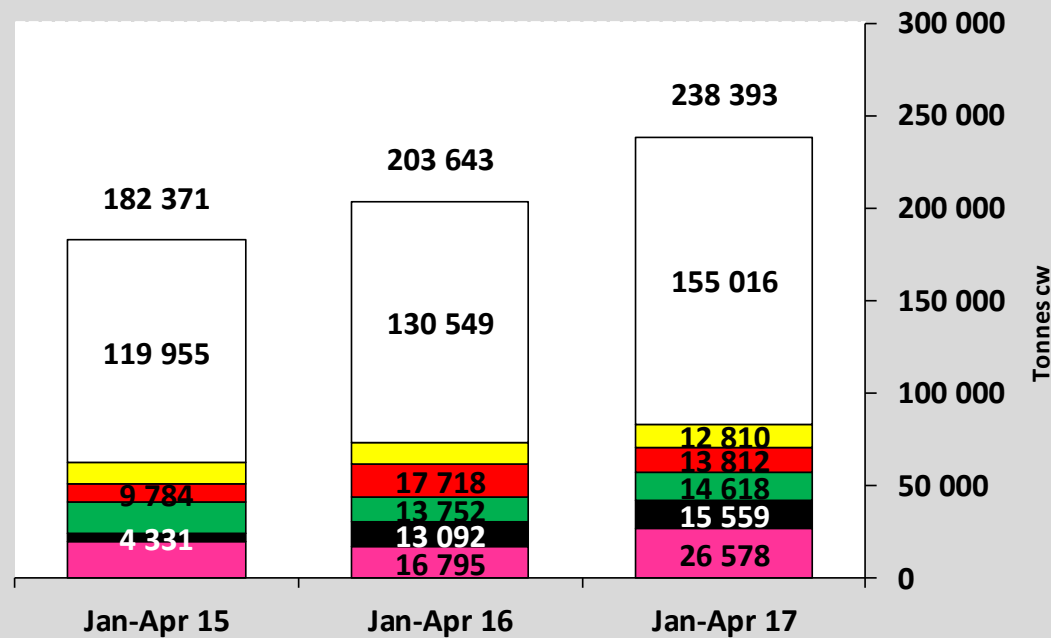
Source : Eurostat

Beef & Veal Production (E28 Slaughtering) - Tonnes



Source : Eurostat

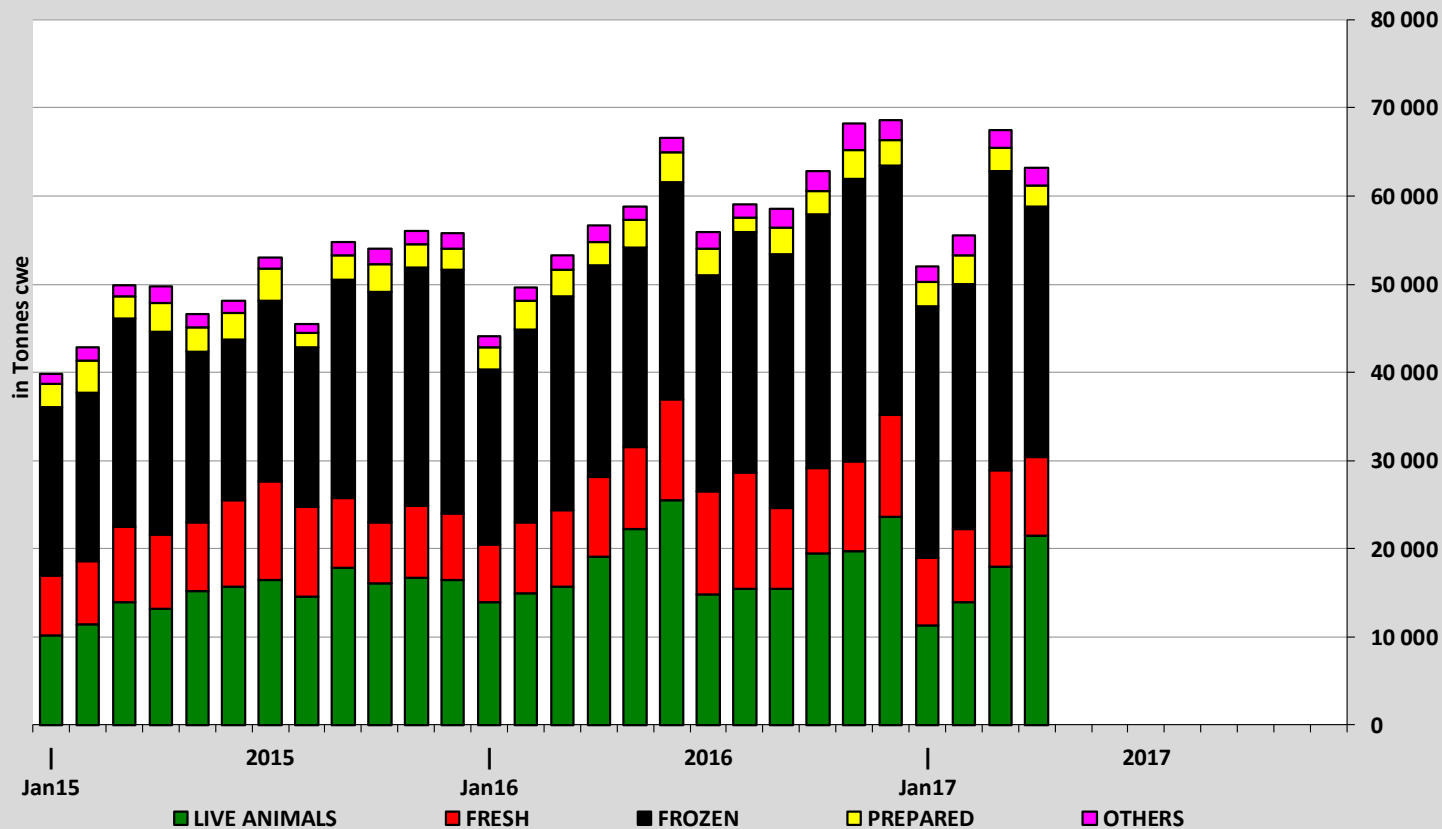
EU EXPORTS of Beef & Veal (Tonnes cwe)



■ Hong Kong
 ■ Israel
 ■ Lebanon
 ■ Turkey
 ■ Ivory Coast
 ■ Other destinations

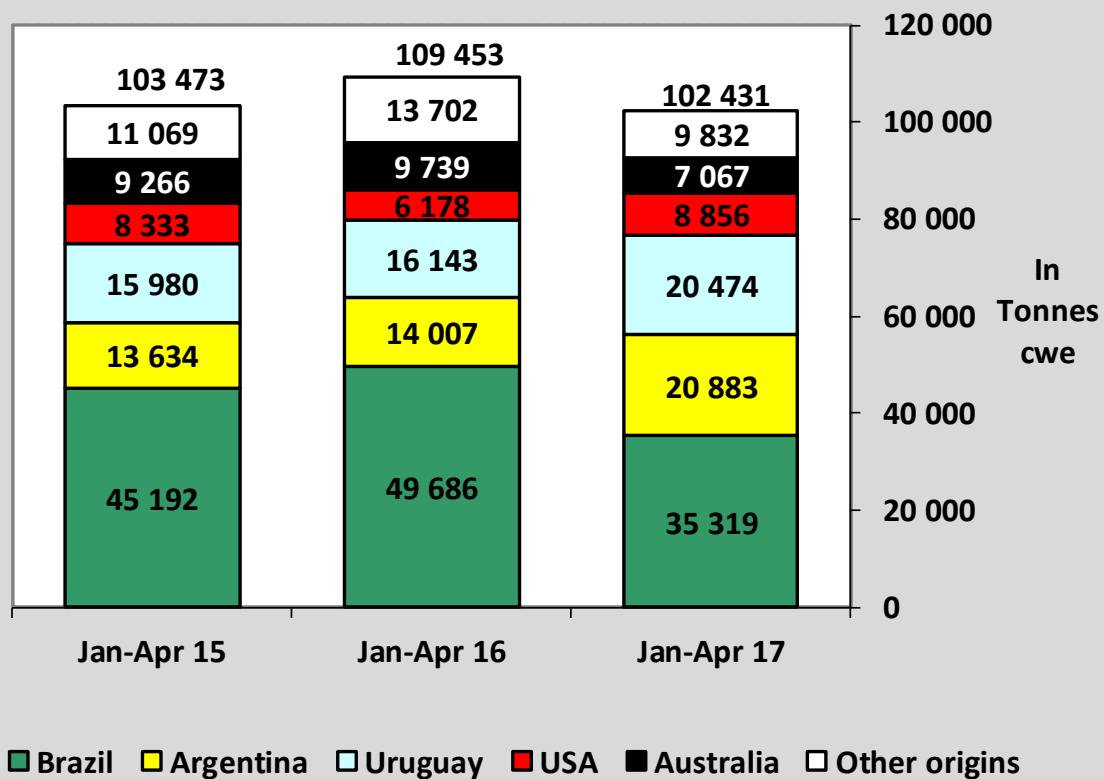
Source : Eurostat - Comext

EU-28 Exports of BEEF products



Source : Eurostat - Comext

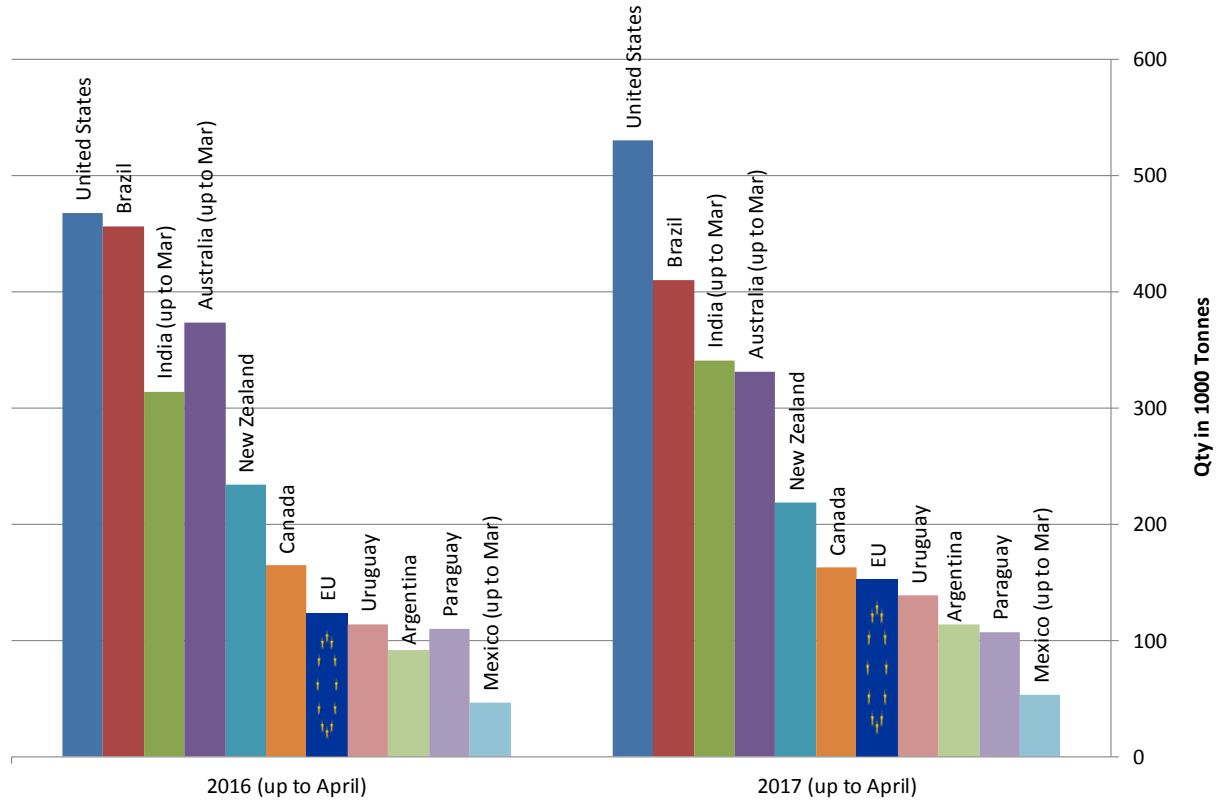
IMPORTS of Beef & Veal into EU (Tonnes cwe)



Source : Eurostat - Comext

Main Exporters of BEEF Products (up to April)

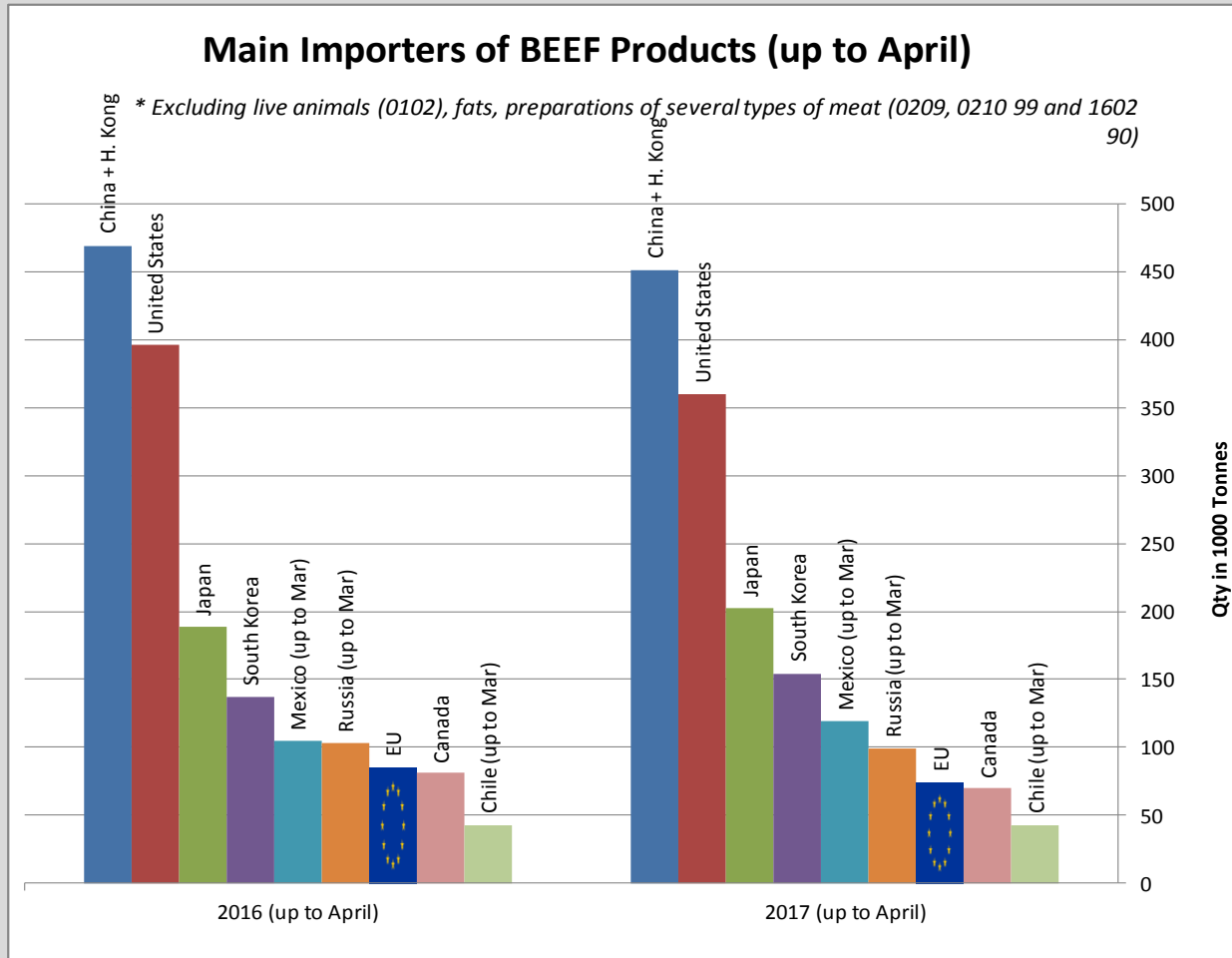
* Excluding live animals (0102), fats, preparations of several types of meat (0209, 0210 99 and 1602 90)



Sources : Global Trade Information Services, Inc. and Eurostat - Comext

Main Importers of BEEF Products (up to April)

* Excluding live animals (0102), fats, preparations of several types of meat (0209, 0210 99 and 1602 90)



Sources : Global Trade Information Services, Inc. and Eurostat - Comext