

Prices

Carcasse

Live Animals

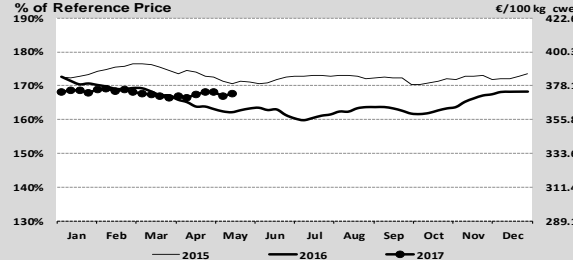
EU Prices week

20

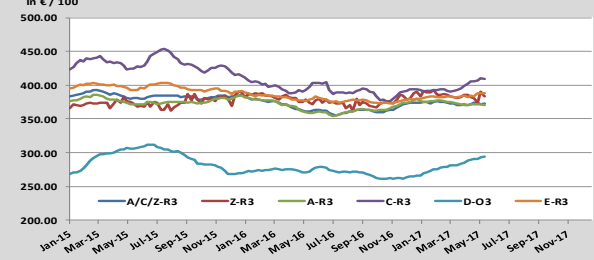
Evolution since last week Evolution since last month Evolution since last year

Category	Price (€)	Unit	Evolution since last week	Evolution since last month	Evolution since last year
Average A/C/Z-R3	372.	€/100 kg	-0.3%	+0.1%	+3.3%
Young Bovines (Z)	382.	€/100 kg	-1.5%	+0.2%	-1.5%
Young Bulls (A)	366.	€/100 kg	-0.1%	-0.3%	+3.4%
Steers (C)	413.4	€/100 kg	-0.2%	+1.0%	+2.3%
Cows (D)	294.6	€/100 kg	+0.6%	+1.9%	+8.2%
Heifers (E)	388.2	€/100 kg	-0.2%	+0.9%	+2.6%
Male Calves Dairy Type	117.0	€/head	+2.1%	+8.3%	+7.0%
Male Calves Beef Type	230.4	€/head	+1.6%	+5.9%	+1.6%
Young Store Cattle	2.39	€/kg	-1.3%	-0.9%	+0.5%
Yearling Male Store Cattle	2.35	€/kg	+1.3%	+0.2%	+0.7%
Yearling Female Store Cattle	2.31	€/kg	-1.7%	-1.8%	+1.1%
Calves slaughtered <8M	501.	€/100	+0.1%	-2.7%	-0.1%

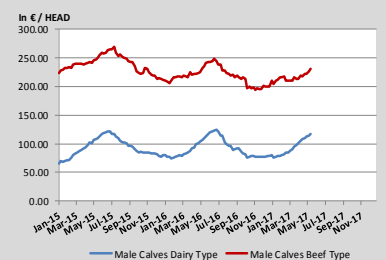
Average A/C/Z-R3 > Wk.20-2017



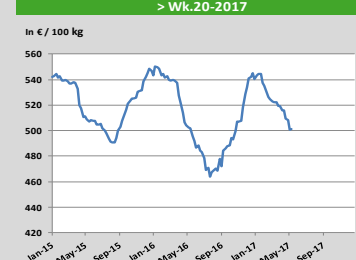
Average EU Bovine Carcasse Price by Category > Wk. 20-2017



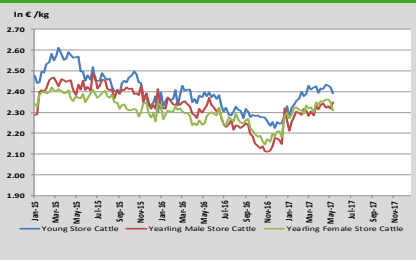
Average Male Calves Prices > Wk.20-2017



Average Prices of Calves Slaughtered before 8M > Wk.20-2017

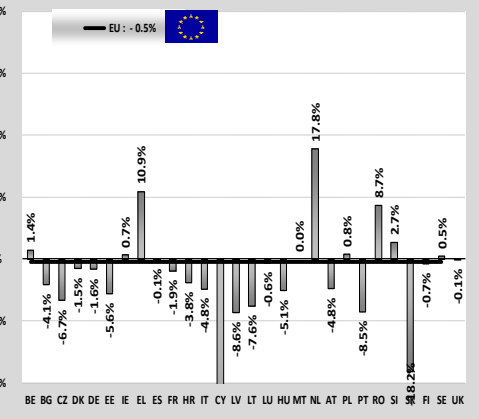


Average Store Cattle Prices > Wk.20-2017

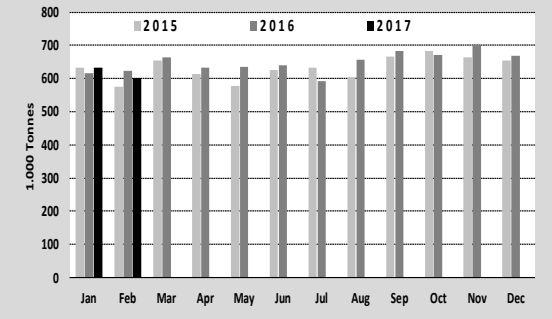


Production

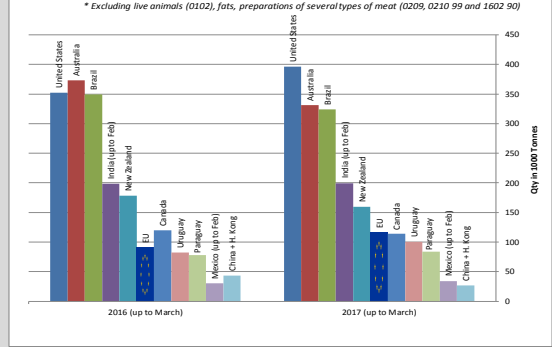
Category	Jan-Feb 16/17	
	EU15	EU28
Bull	-3.4%	-2.9%
Bullock	-1.6%	-1.7%
Cow	+0.5%	+0.1%
Heifer	+0.9%	+1.1%
Calve	+4.2%	+4.1%
Young cattle	+0.4%	+0.6%
Meat of bovine animals	-0.4%	-0.5%



Beef & Veal Production (E28 Slaughtering) - Tonnes

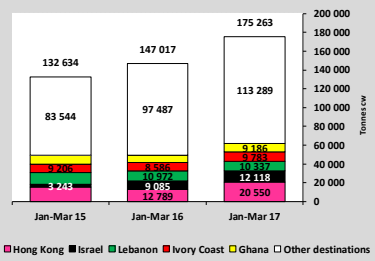


Main Exporters of BEEF Products (up to March)

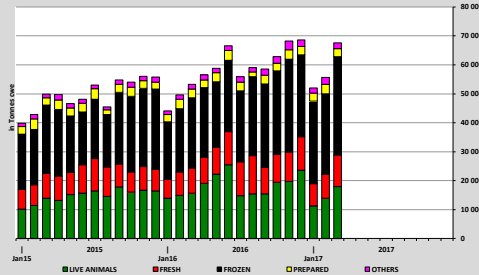


Trade

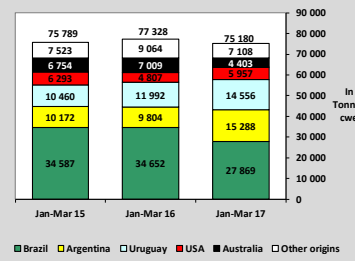
EU EXPORTS of Beef & Veal (Tonnes cwe)



EU-28 Exports of BEEF products

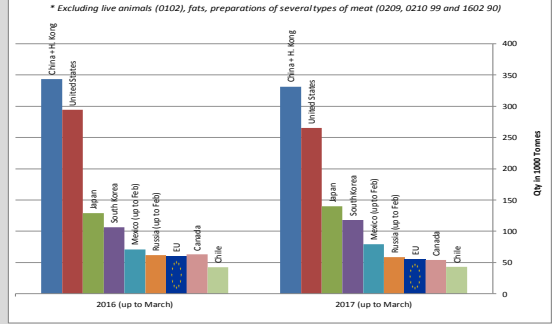


IMPORTS of Beef & Veal into EU (Tonnes cwe)



World Trade

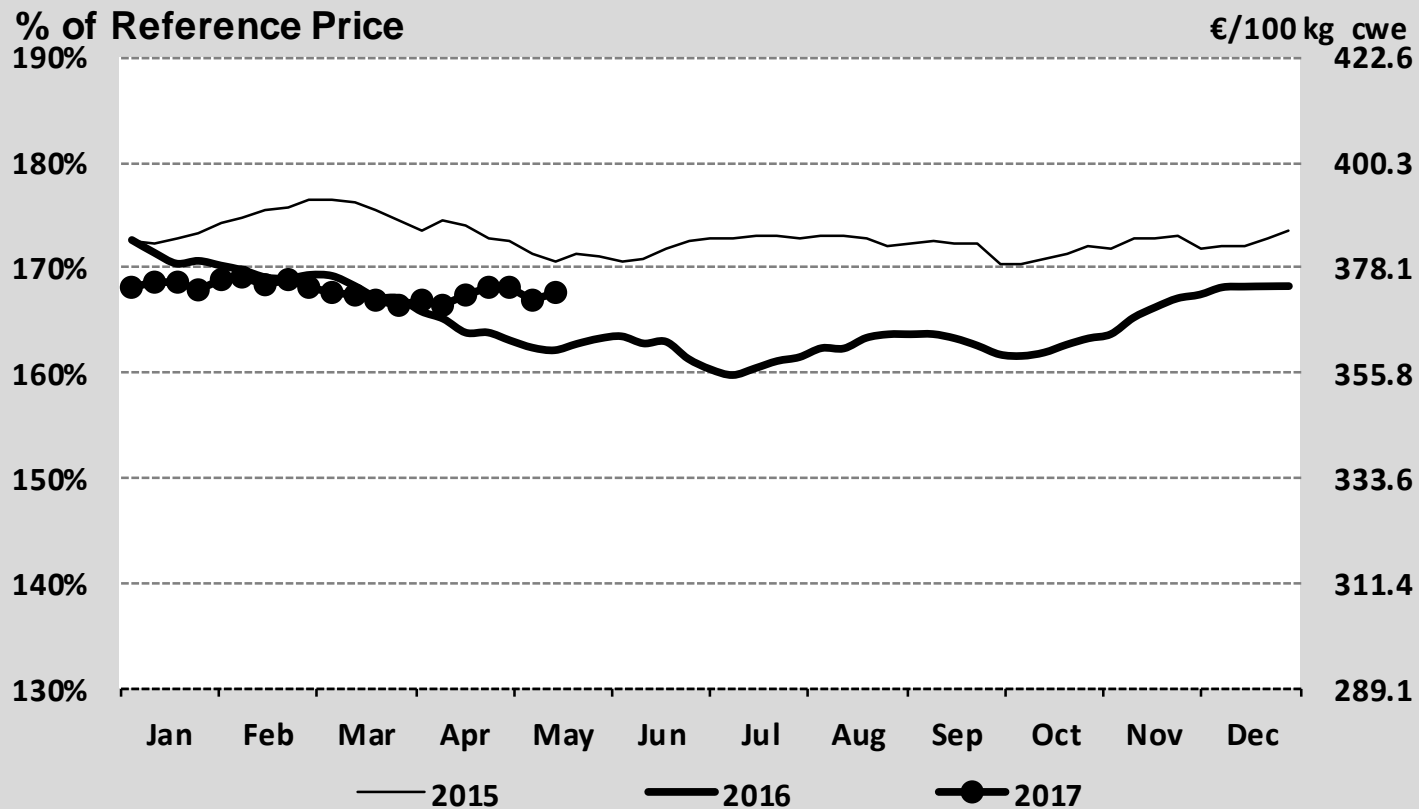
Main Importers of BEEF Products (up to March)



EU Prices week		20	Evolution since last week	Evolution since last month	Evolution since last year
Carcasse	Average A/C/Z-R3	372. € / 100 kg	- 0.3%	+ 0.1%	+ 3.3%
	Young Bovines (Z)	382.	- 1.5%	+ 0.2%	- 1.5%
	Young Bulls (A)	366.	- 0.1%	- 0.3%	+ 3.4%
	Steers (C)	413.4	- 0.2%	+ 1.0%	+ 2.3%
	Cows (D)	294.6	+ 0.6%	+ 1.9%	+ 8.2%
	Heifers (E)	388.2	- 0.2%	+ 0.9%	+ 2.6%
Live Animals	Male Calves Dairy Type	117.0 € / head	+ 2.1%	+ 8.3%	+ 7.0%
	Male Calves Beef Type	230.4	+ 1.6%	+ 5.9%	+ 1.6%
	Young Store Cattle	2.39 € / kg	- 1.3%	- 0.9%	+ 0.5%
	Yearling Male Store Cattle	2.35	+ 1.3%	+ 0.2%	+ 0.7%
	Yearling Female Store Cattle	2.31	- 1.7%	- 1.8%	+ 1.1%
	Calves slaughtered <8M	501. € / 100	+ 0.1%	- 2.7%	- 0.1%

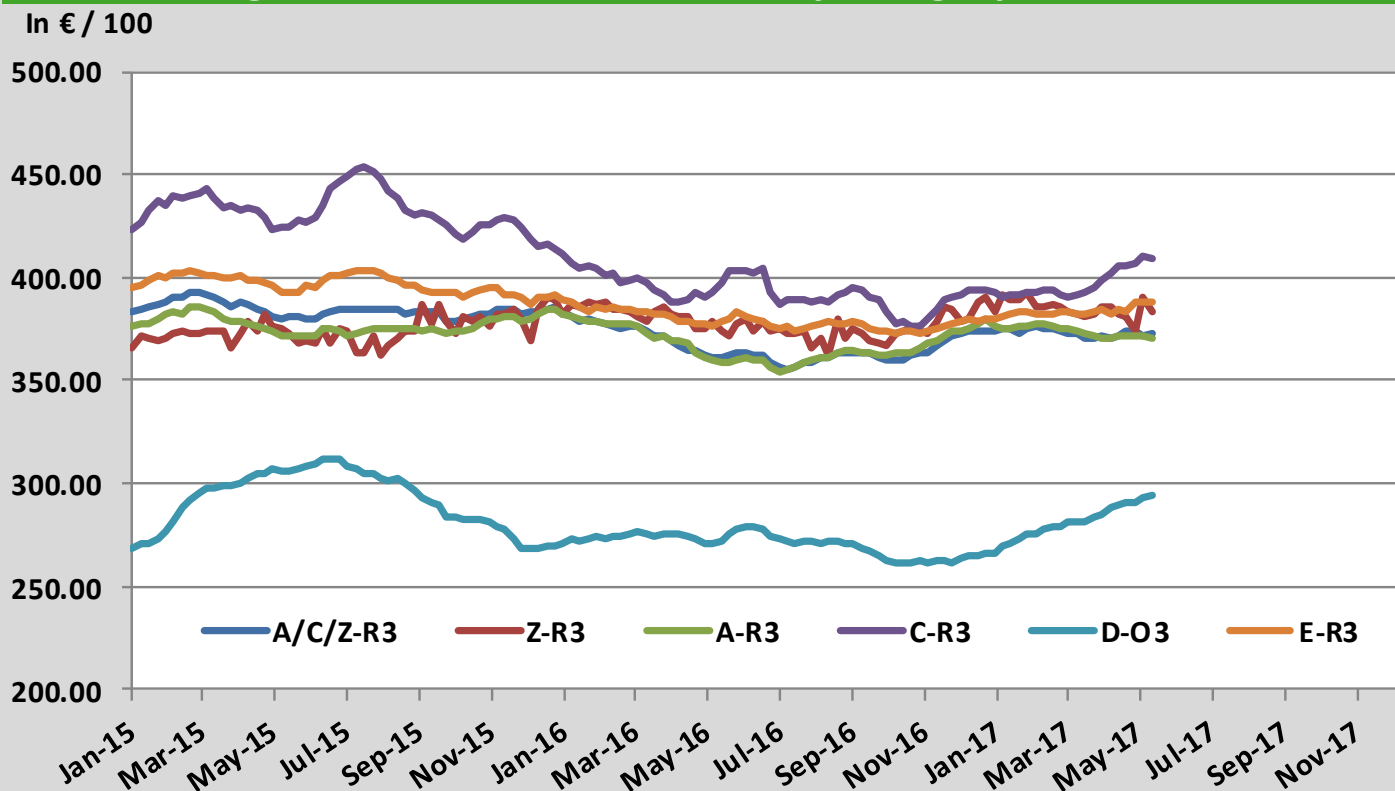
Sources : MSs notifications (Regulation (EC) 1249/2008 and 807/2013)

Average A/C/Z -R3 > Wk.20-2017



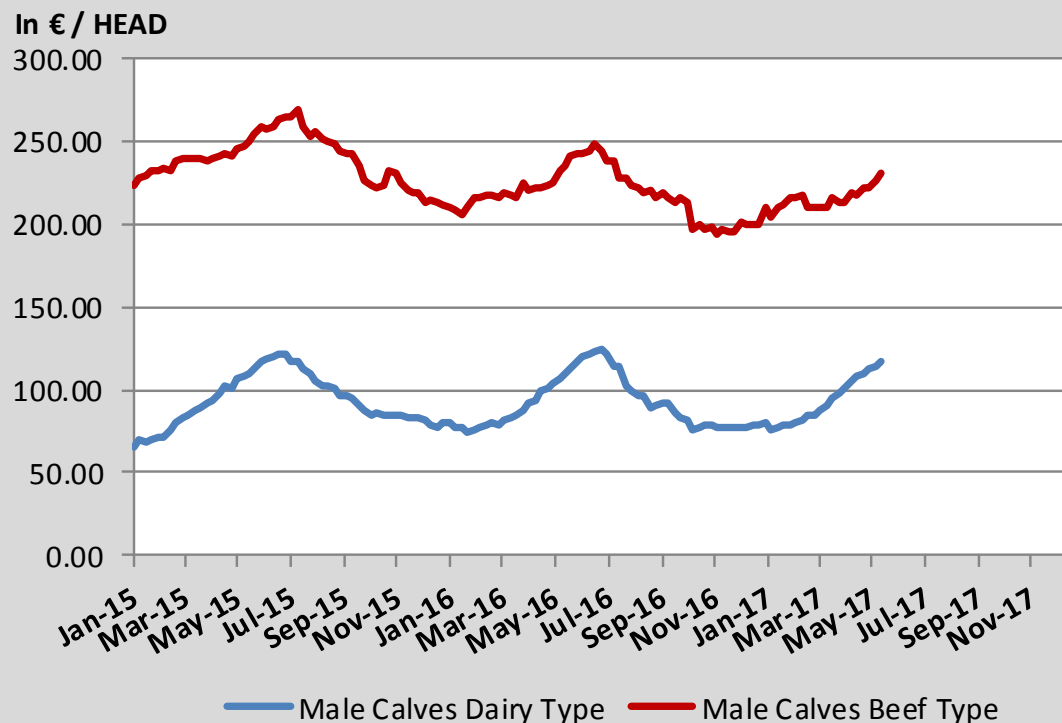
Source : MSs notifications (Regulation (EC) 1249/2008)

Average EU Bovine Carcasse Price by Category > Wk 20-2017



Source : MSs notifications (Regulation (EC) 1249/2008)

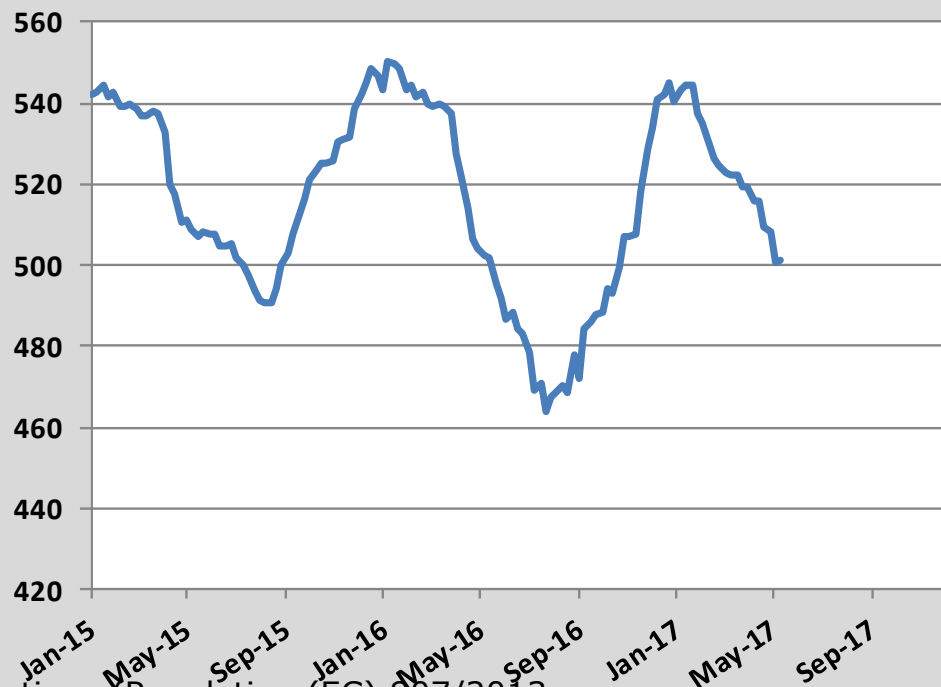
Average Male Calves Prices > Wk.20-2017



Source : MSs notifications (Regulation (EC) 807/2013)

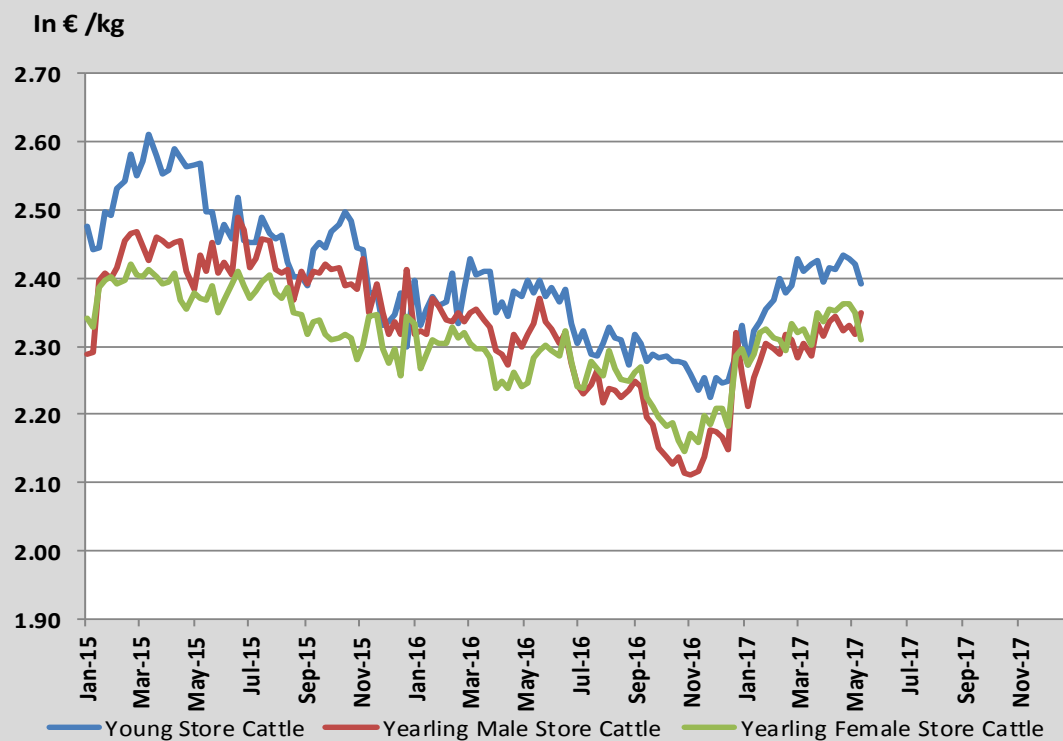
Average Prices of Calves Slaughtered before 8M > Wk.20-2017

In € / 100 kg



Source : MSs notifications (Regulation (EC) 807/2013)

Average Store Cattle Prices > Wk.20-2017

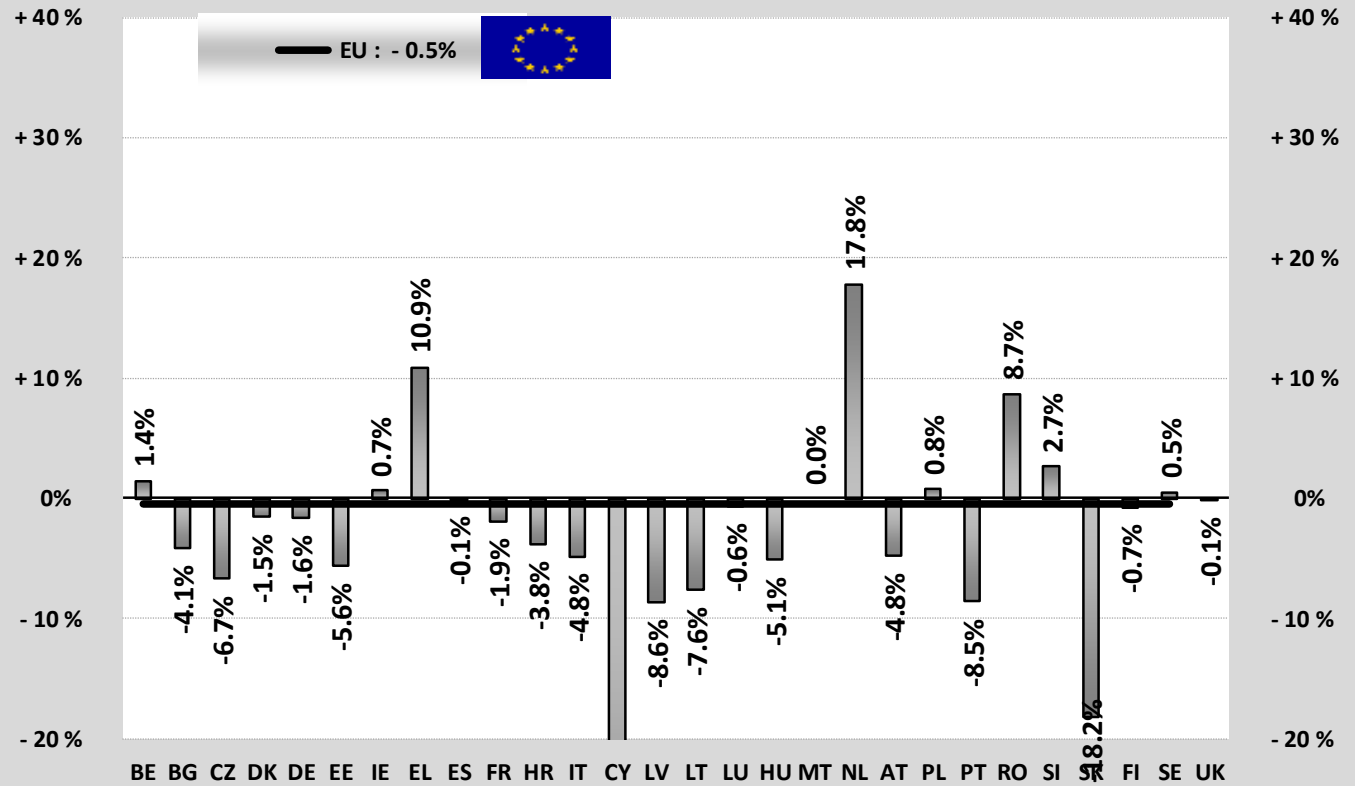


Source : MSs notifications (Regulation (EC) 807/2013)

TONNES	Jan-Feb 16/17	
	EU15	EU28
Bull	-3.4%	-2.9%
Bullock	-1.6%	-1.7%
Cow	+0.5%	+0.1%
Heifer	+0.9%	+1.1%
Calve	+4.2%	+4.1%
Young cattle	+0.4%	+0.6%
Meat of bovine animals	-0.4%	-0.5%

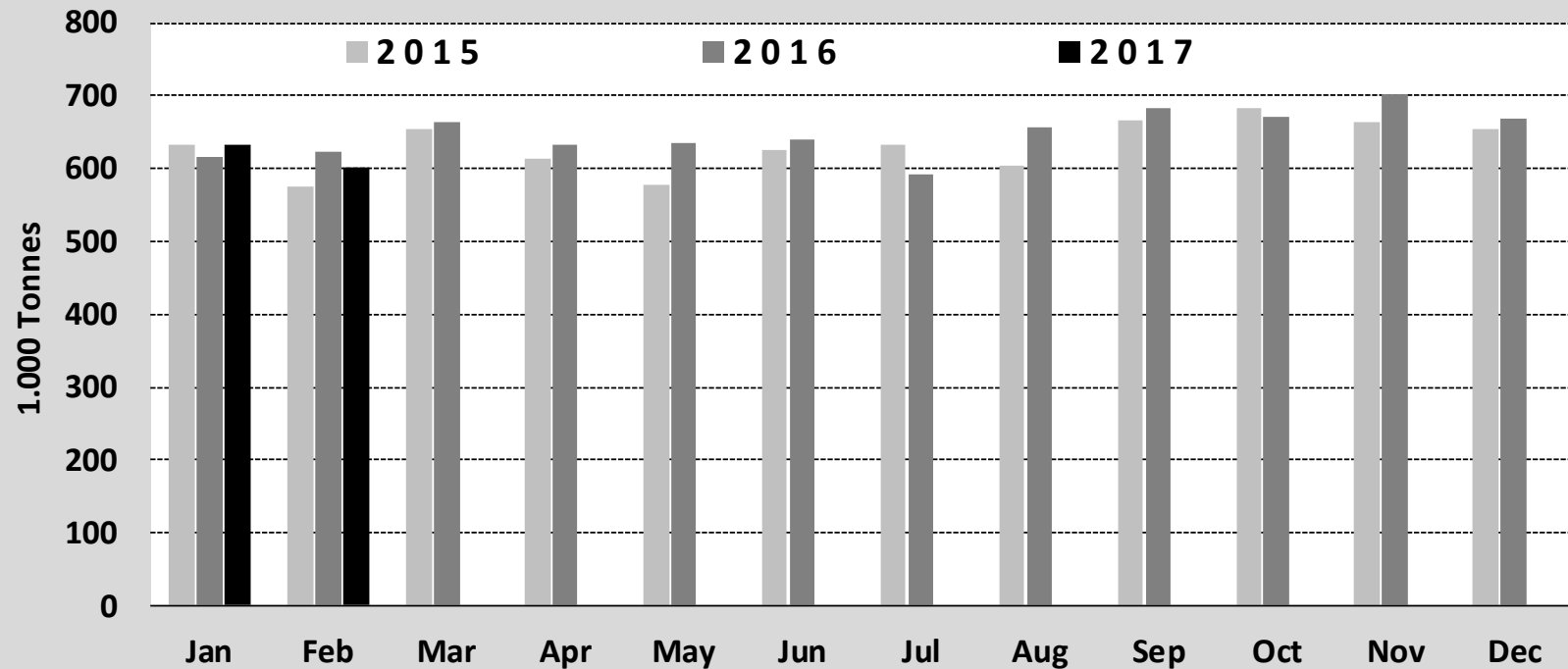
Estimates for last month :

UK



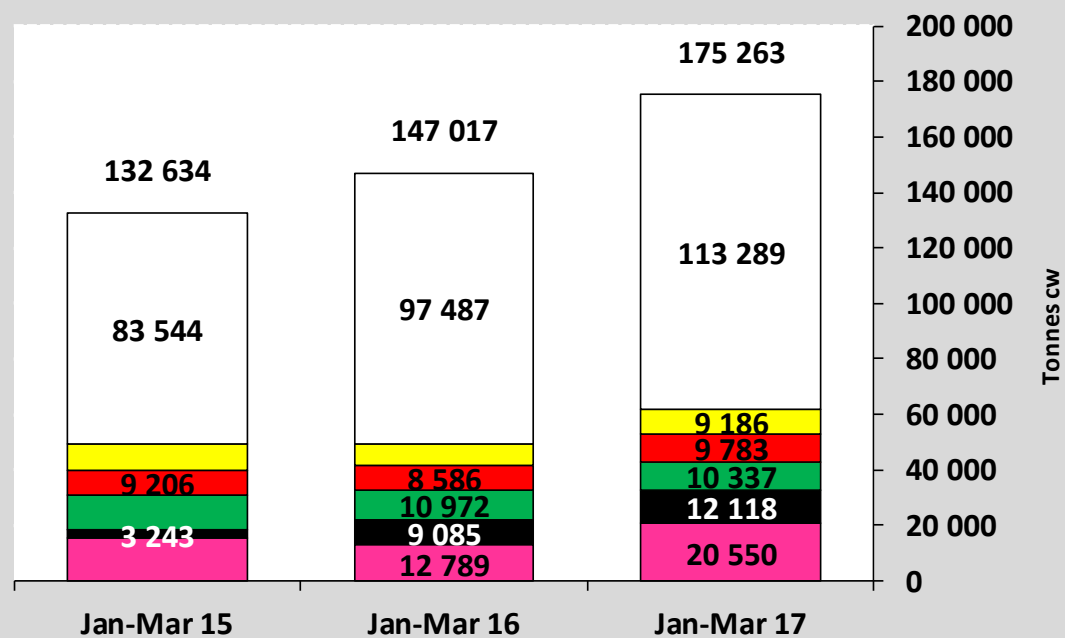
Source : Eurostat

Beef & Veal Production (E28 Slaughtering) - Tonnes



Source : Eurostat

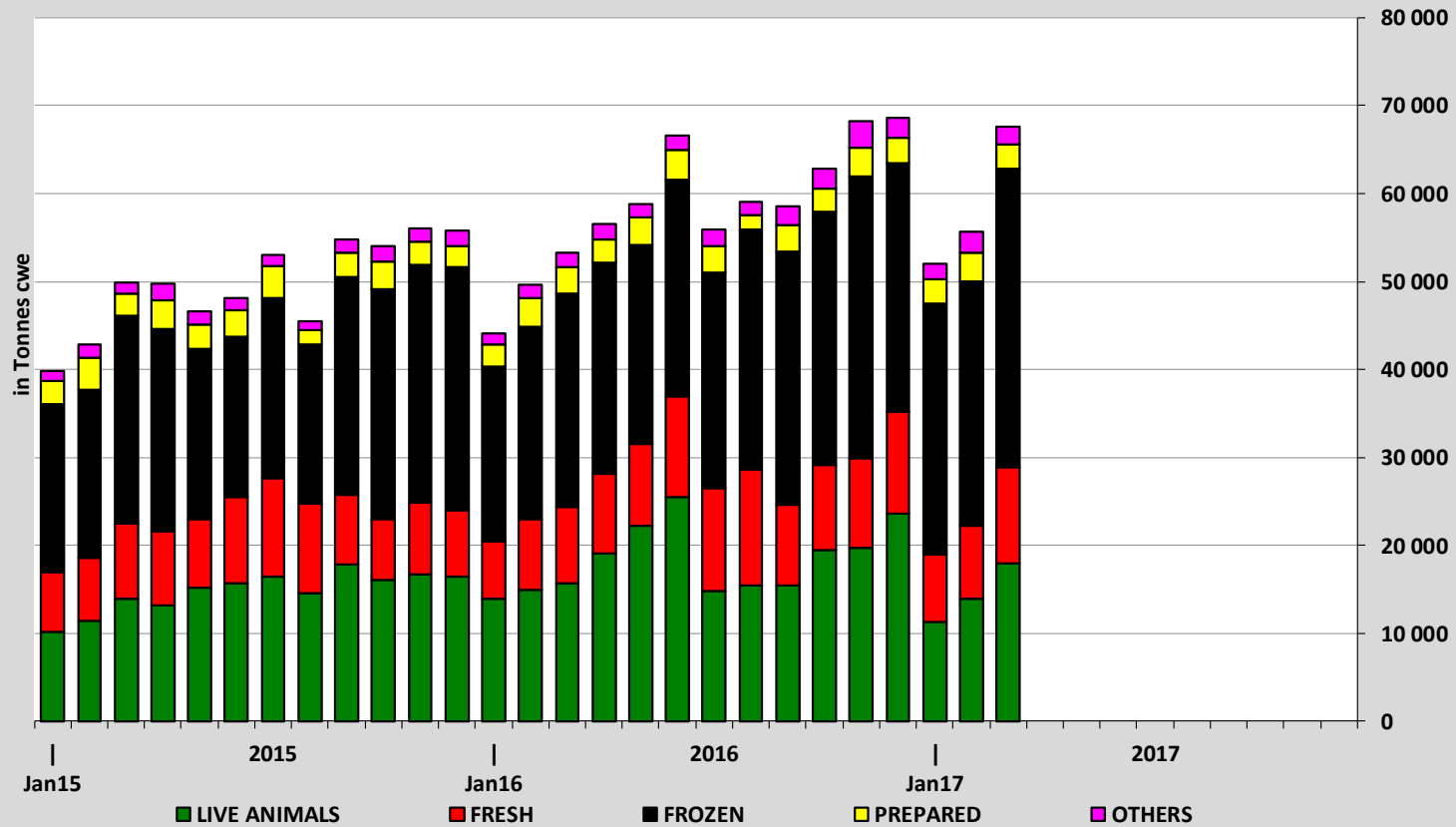
EU EXPORTS of Beef & Veal (Tonnes cwe)



■ Hong Kong
 ■ Israel
 ■ Lebanon
 ■ Ivory Coast
 ■ Ghana
 ■ Other destinations

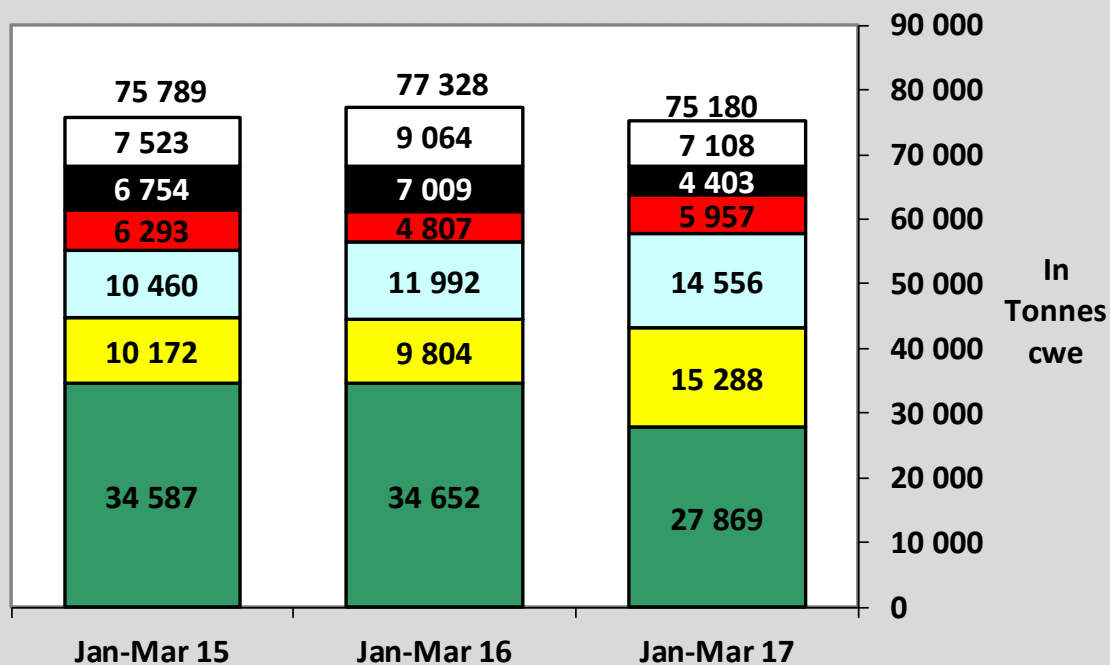
Source : Eurostat - Comext

EU-28 Exports of BEEF products



Source : Eurostat - Comext

IMPORTS of Beef & Veal into EU (Tonnes cwe)

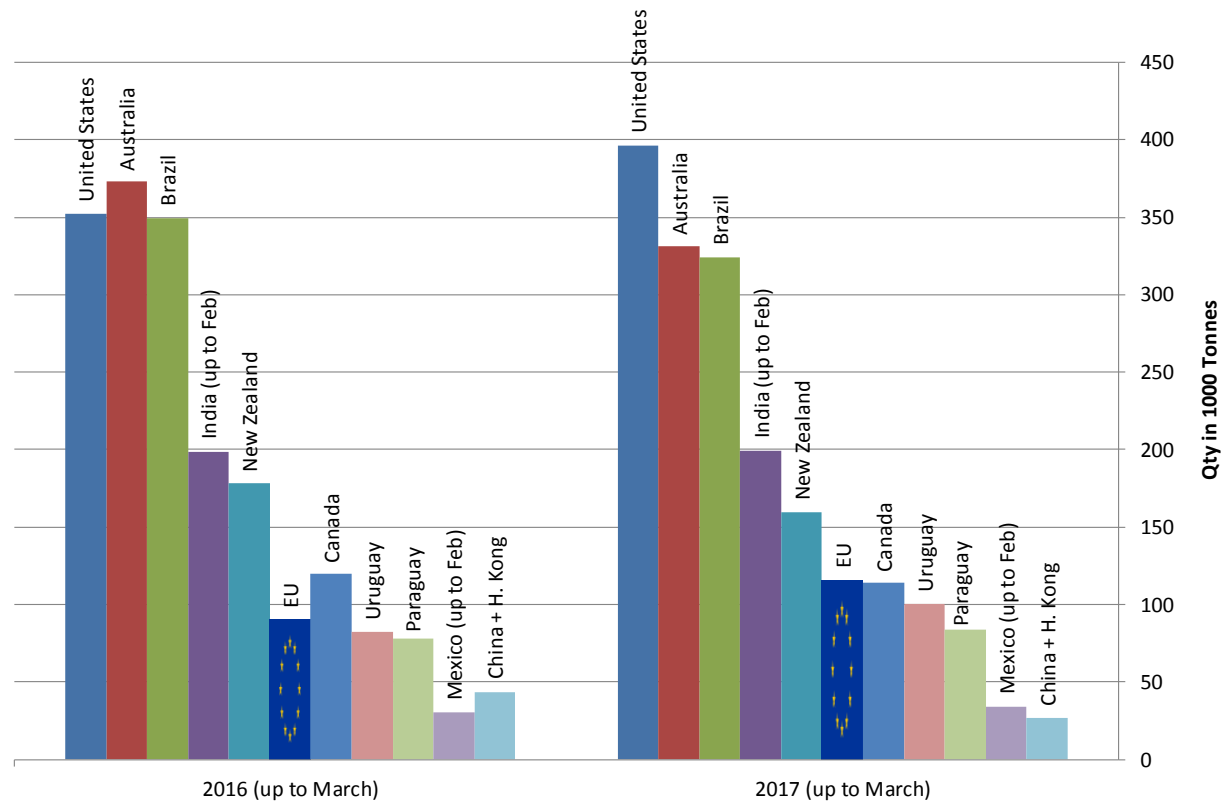


■ Brazil
 ■ Argentina
 ■ Uruguay
 ■ USA
 ■ Australia
 ■ Other origins

Source : Eurostat - Comext

Main Exporters of BEEF Products (up to March)

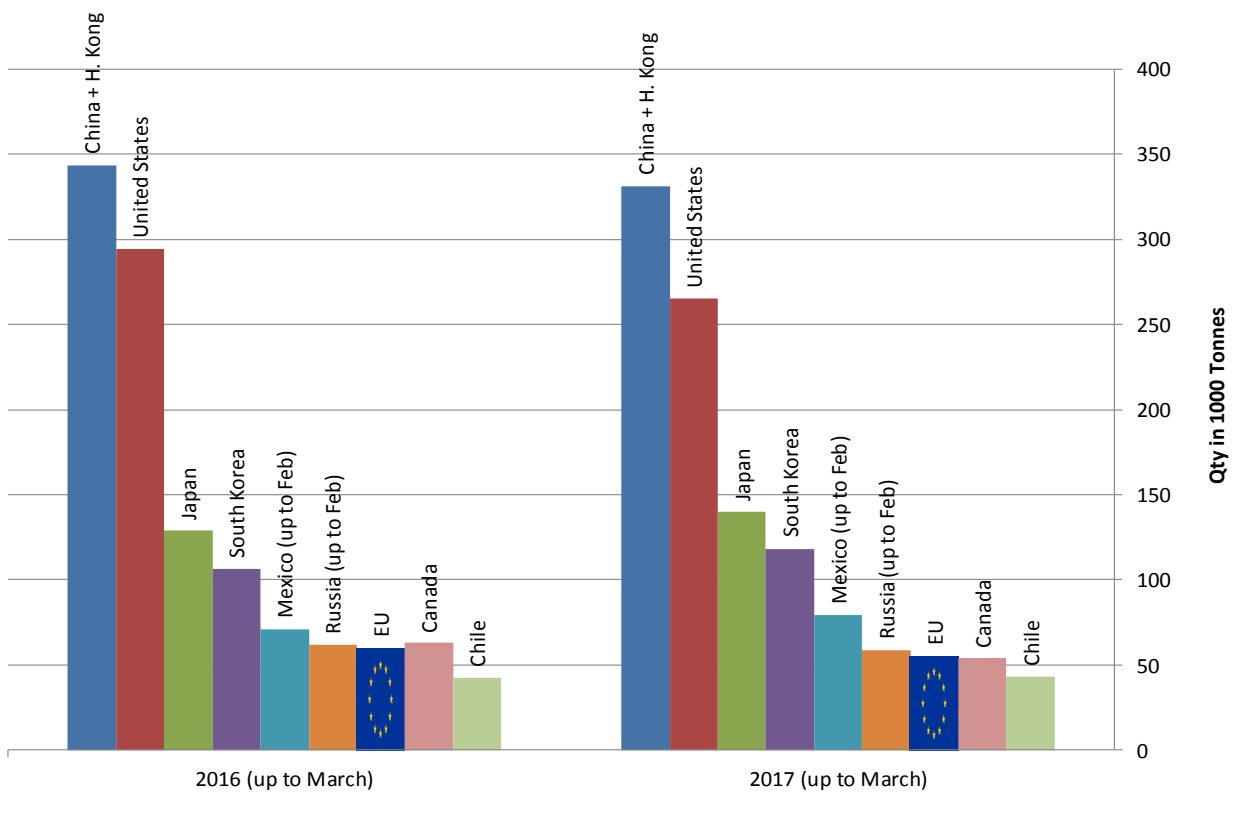
* Excluding live animals (0102), fats, preparations of several types of meat (0209, 0210 99 and 1602 90)



Sources : Global Trade Information Services, Inc. and Eurostat - Comext

Main Importers of BEEF Products (up to March)

* Excluding live animals (0102), fats, preparations of several types of meat (0209, 0210 99 and 1602 90)



Sources : Global Trade Information Services, Inc. and Eurostat - Comext