

Prices

Carcasse

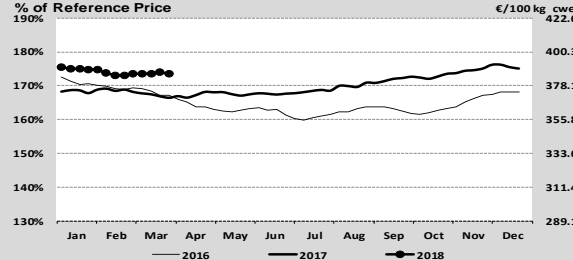
Live Animals

EU Prices week

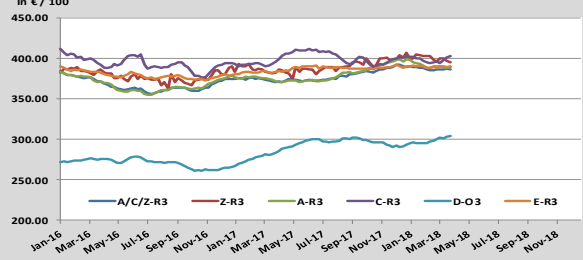
13

	Evolution since last week	Evolution since last month	Evolution since last year
Average A/C/Z-R3	-0.3%	-0.1%	+4.2%
Young Bovines (Z)	-0.3%	-0.1%	-0.3%
Young Bulls (A)	-0.4%	-0.9%	+4.3%
Steers (C)	+0.3%	+1.8%	+1.8%
Cows (D)	+0.5%	+1.6%	+7.4%
Heifers (E)	+0.4%	+0.5%	+1.9%
Male Calves Dairy Type	+1.6%	+6.1%	+3.8%
Male Calves Beef Type	+0.7%	+0.6%	+0.7%
Young Store Cattle	-0.8%	-0.5%	+1.4%
Yearling Male Store Cattle	-0.3%	+0.5%	+0.4%
Yearling Female Store Cattle	+0.0%	-0.2%	+0.8%
Calves slaughtered <8M	-0.5%	-1.0%	+4.0%

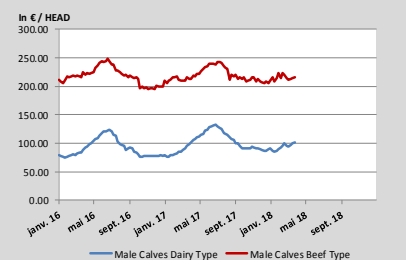
Average A/C/Z-R3 > Wk.13-2018



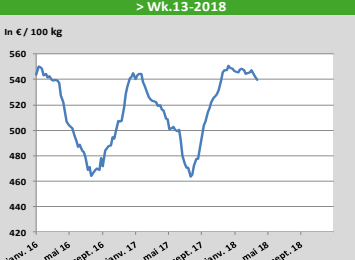
Average EU Bovine Carcasse by Category > Wk. 13-2018



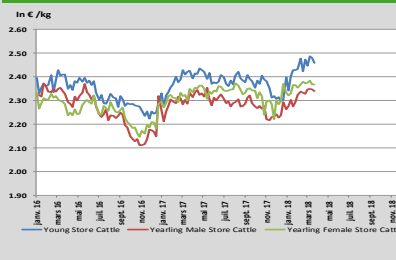
Average Male Calves Prices > Wk.13-2018



Average Prices of Calves Slaughtered before 8M > Wk.13-2018

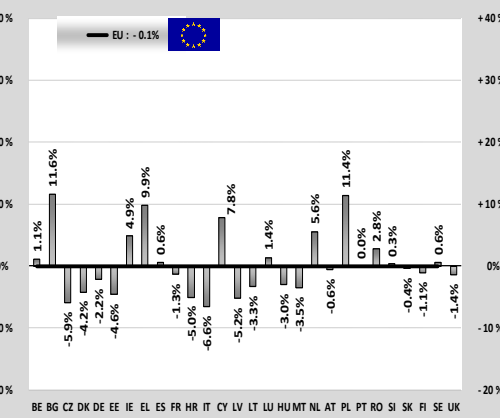


Average Store Cattle Prices > Wk.13-2018

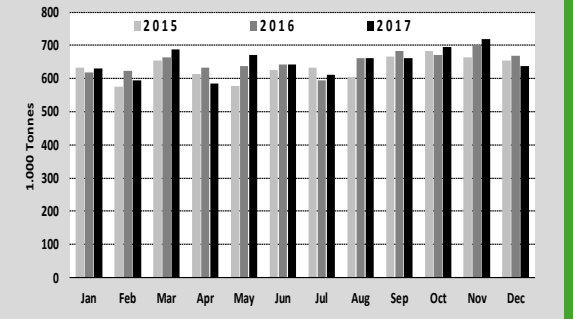


Production

TONNES	Jan-Dec 16/17		%
	EU15	EU28	
Bull	-1.8%	-0.0%	
Bullock	+1.6%	+1.5%	
Cow	-3.9%	-3.3%	
Heifer	+6.8%	+7.1%	
Calve	-0.4%	-0.4%	
Young cattle	-4.1%	-3.3%	
Meat of bovine animals	-0.8%	-0.1%	

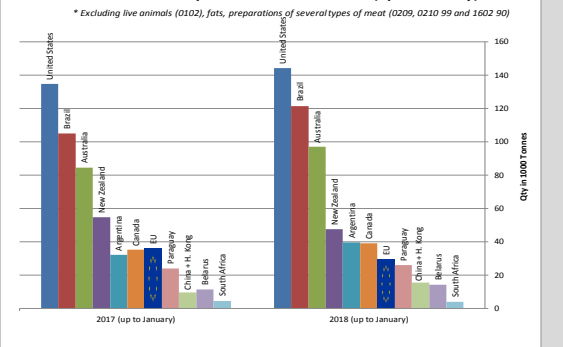


Beef & Veal Production (E28 Slaughtering) - Tonnes

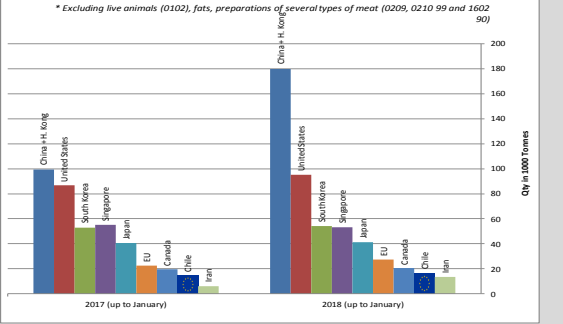


World Trade

Main Exporters of BEEF Products (up to January)

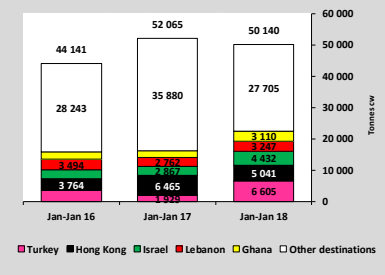


Main Importers of BEEF Products (up to January)

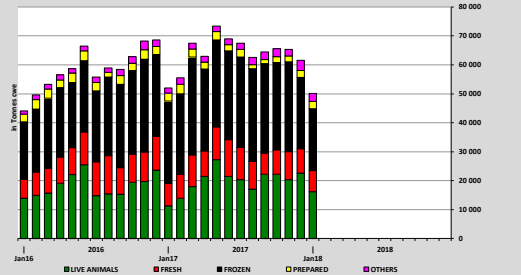


Trade

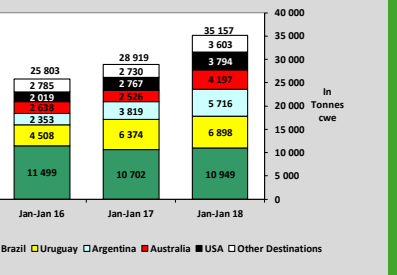
EU EXPORTS of Beef & Veal (Tonnes cwe)



EU-28 Exports of BEEF products



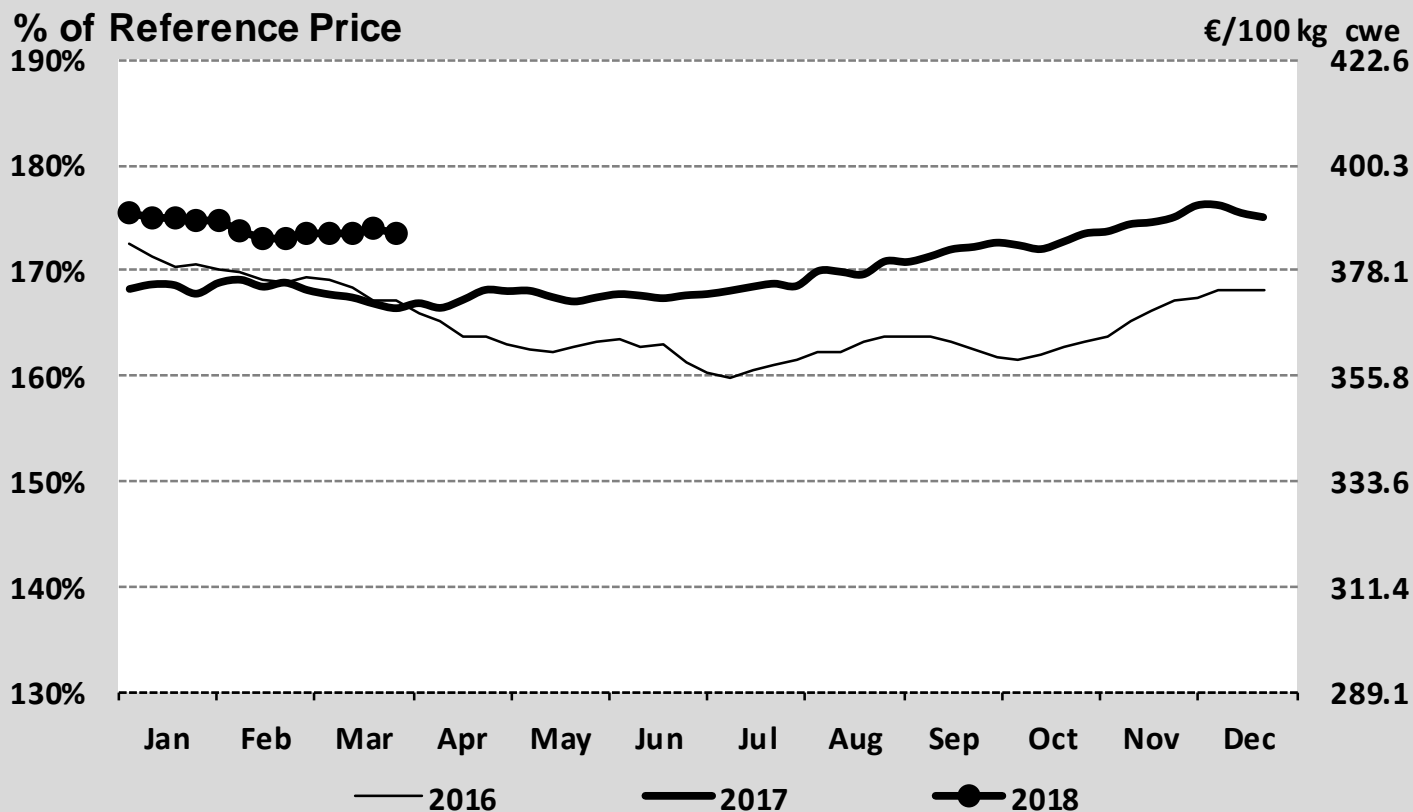
IMPORTS of Beef & Veal into EU (Tonnes cwe)



EU Prices week		13	Evolution since last week	Evolution since last month	Evolution since last year
<b>Carcasse</b>	Average A/C/Z -R3	385.7	- 0.3%	- 0.1%	+ 4.2%
	Young Bovines (Z)	395.2	- 0.3%	- 0.1%	- 0.3%
	Young Bulls (A)	385.6	- 0.4%	- 0.9%	+ 4.3%
	Steers (C)	405.3	+ 0.3%	+ 1.8%	+ 1.8%
	Cows (D)	304.4	+ 0.5%	+ 1.6%	+ 7.4%
	Heifers (E)	390.2	+ 0.4%	+ 0.5%	+ 1.9%
<b>Live Animals</b>	Male Calves Dairy Type	102.0	+ 1.6%	+ 6.1%	+ 3.8%
	Male Calves Beef Type	216.0	+ 0.7%	+ 0.6%	+ 0.7%
	Young Store Cattle	2.46	- 0.8%	- 0.5%	+ 1.4%
	Yearling Male Store Cattle	2.34	- 0.3%	+ 0.5%	+ 0.4%
	Yearling Female Store Cattle	2.37	+ 0.0%	- 0.2%	+ 0.8%
	Calves slaughtered <8M	539.7	- 0.5%	- 1.0%	+ 4.0%

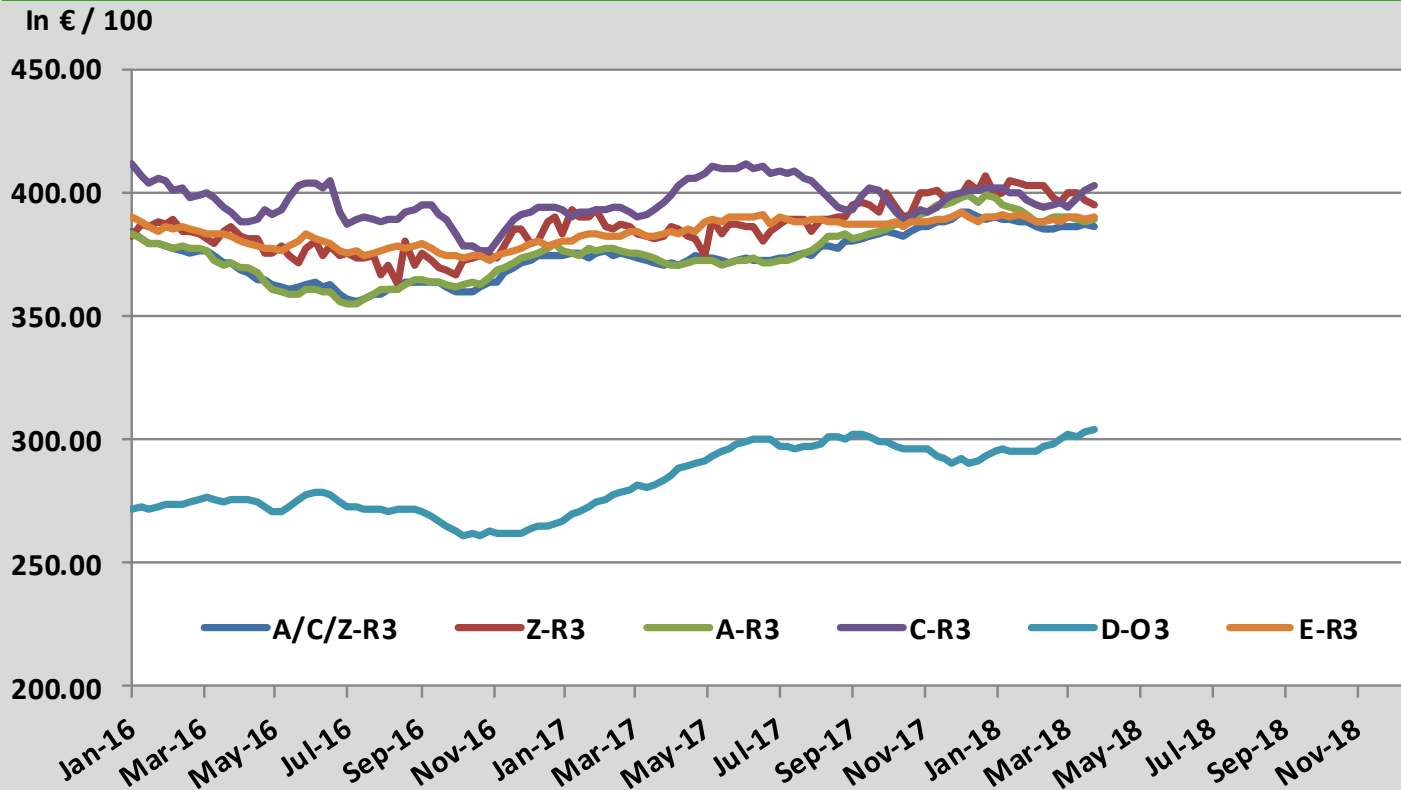
Sources : MSs notifications (Regulation (EC) 1249/2008 and 807/2013)

## Average A/C/Z -R3 > Wk.13-2018



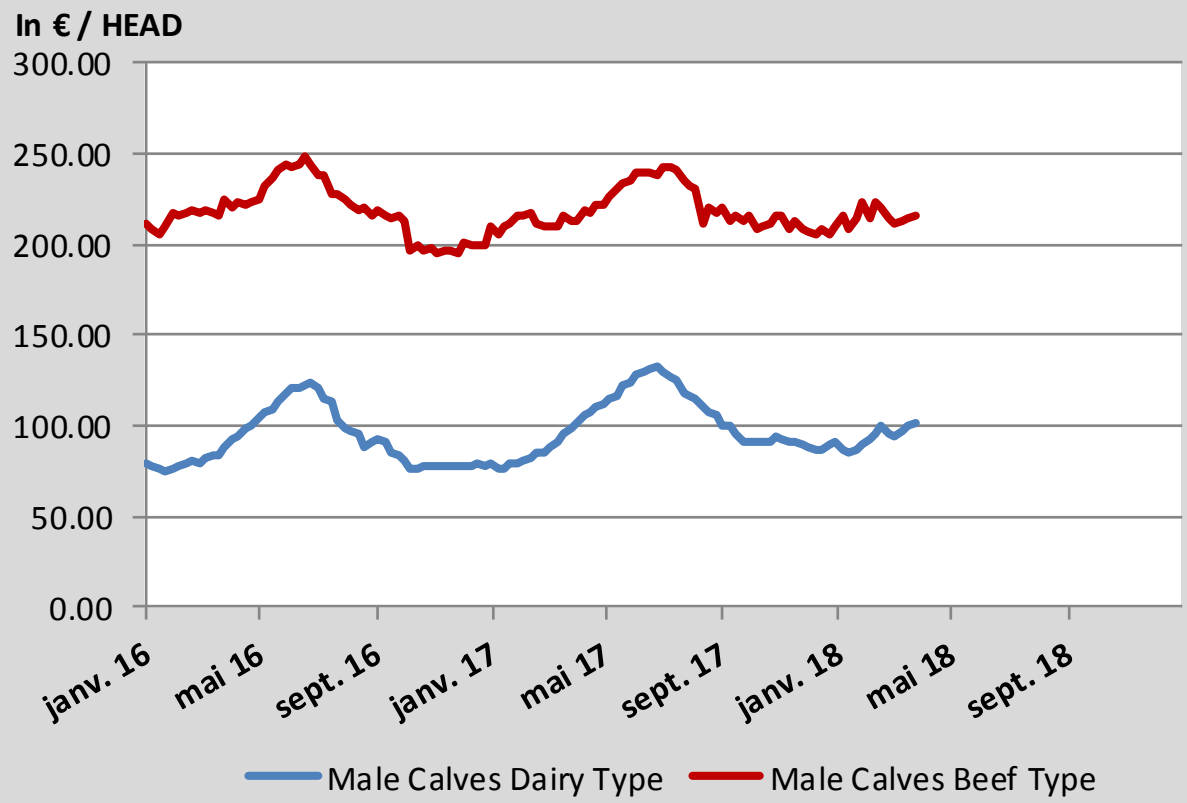
Source : MSs notifications (Regulation (EC) 1249/2008)

## Average EU Bovine Carcasse Price by Category > Wk 13-2018



Source : MSs notifications (Regulation (EC) 1249/2008)

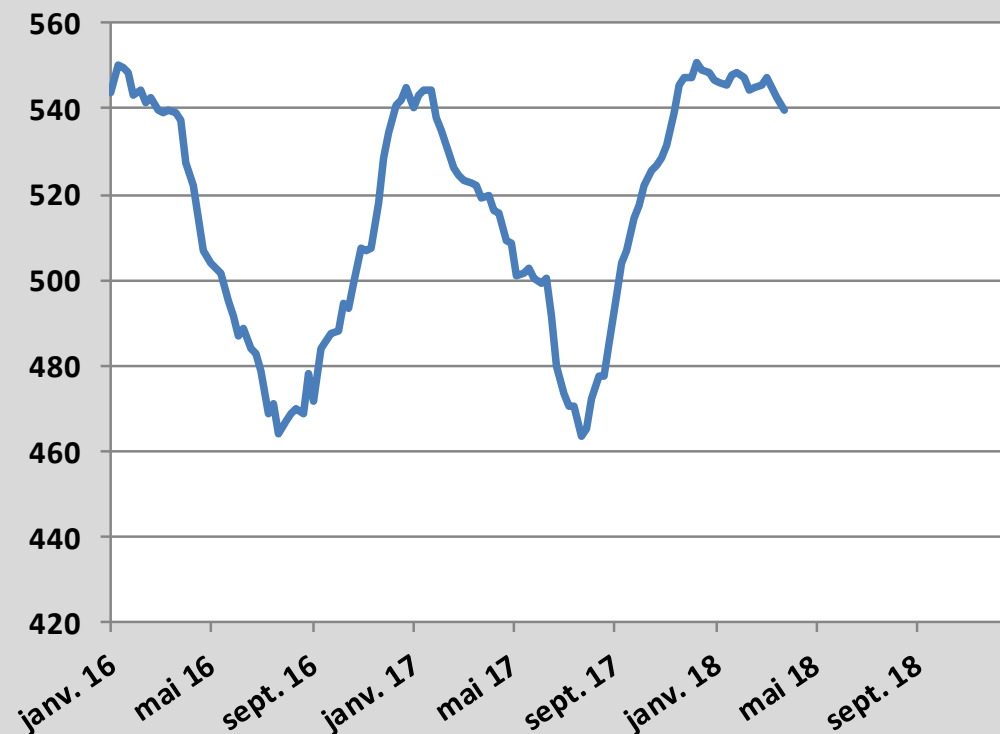
## Average Male Calves Prices > Wk.13-2018



Source : MSs notifications (Regulation (EC) 807/2013)

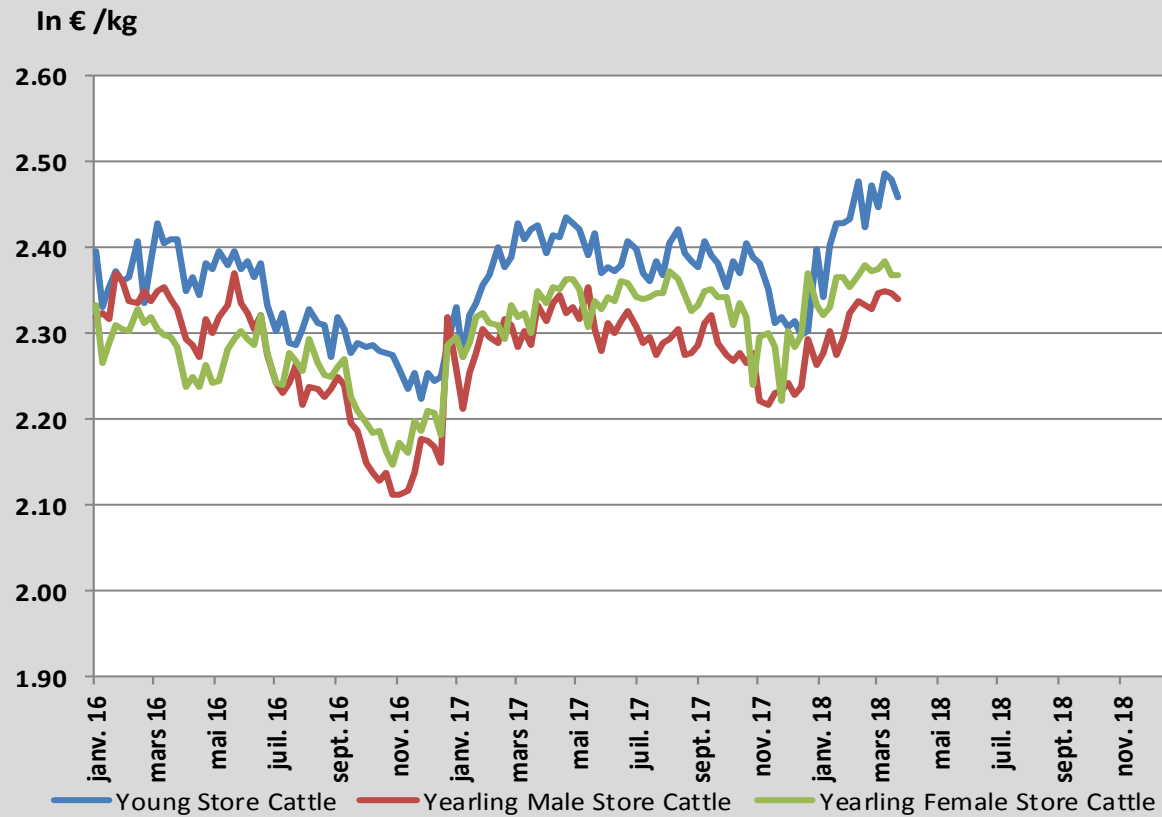
## Average Prices of Calves Slaughtered before 8M > Wk.13-2018

In € / 100 kg



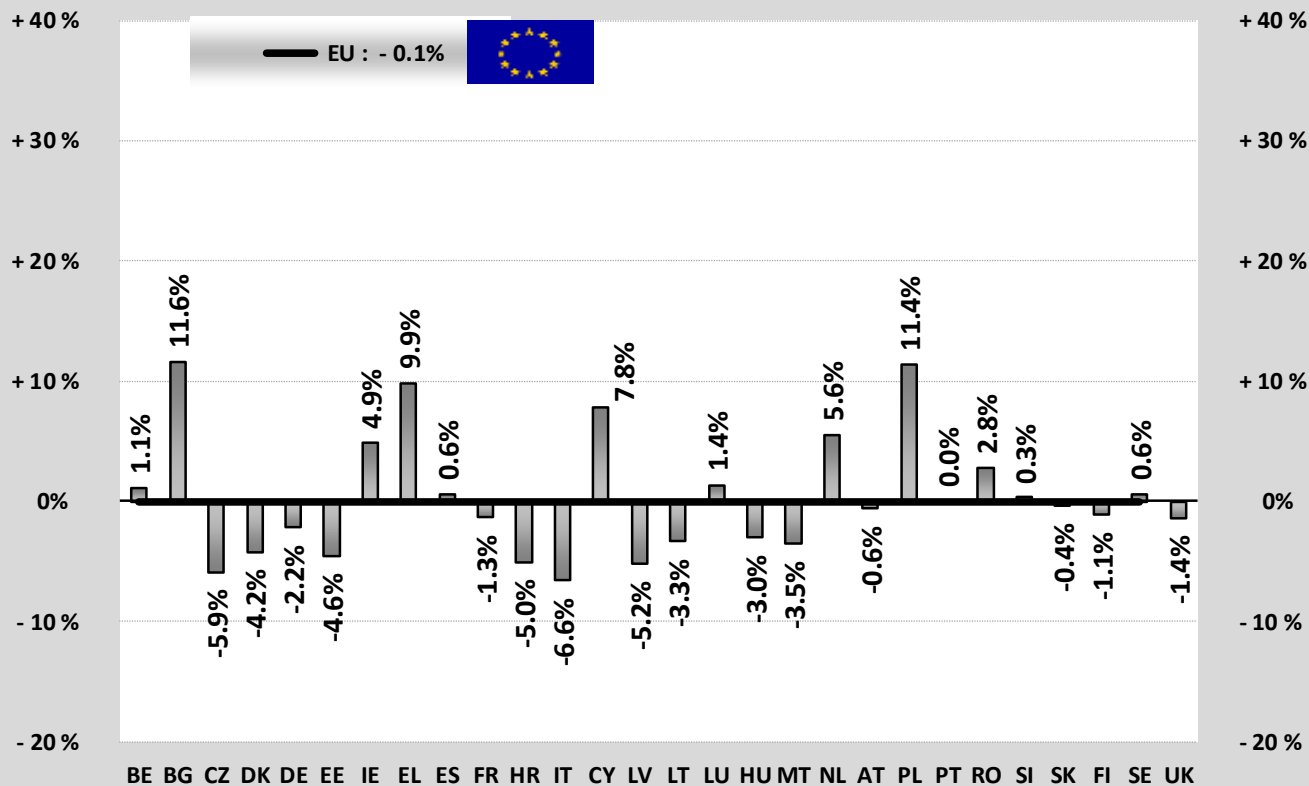
Source : MSs notifications (Regulation (EC) 807/2013)

## Average Store Cattle Prices > Wk.13-2018



Source : MSs notifications (Regulation (EC) 807/2013)

TONNES	Jan-Dec 16/17	
	EU15	EU28
Bull	-1.8%	-0.0%
Bullock	+1.6%	+1.5%
Cow	-3.9%	-3.3%
Heifer	+6.8%	+7.1%
Calve	-0.4%	-0.4%
Young cattle	-4.1%	-3.3%
Meat of bovine animals	-0.8%	-0.1%

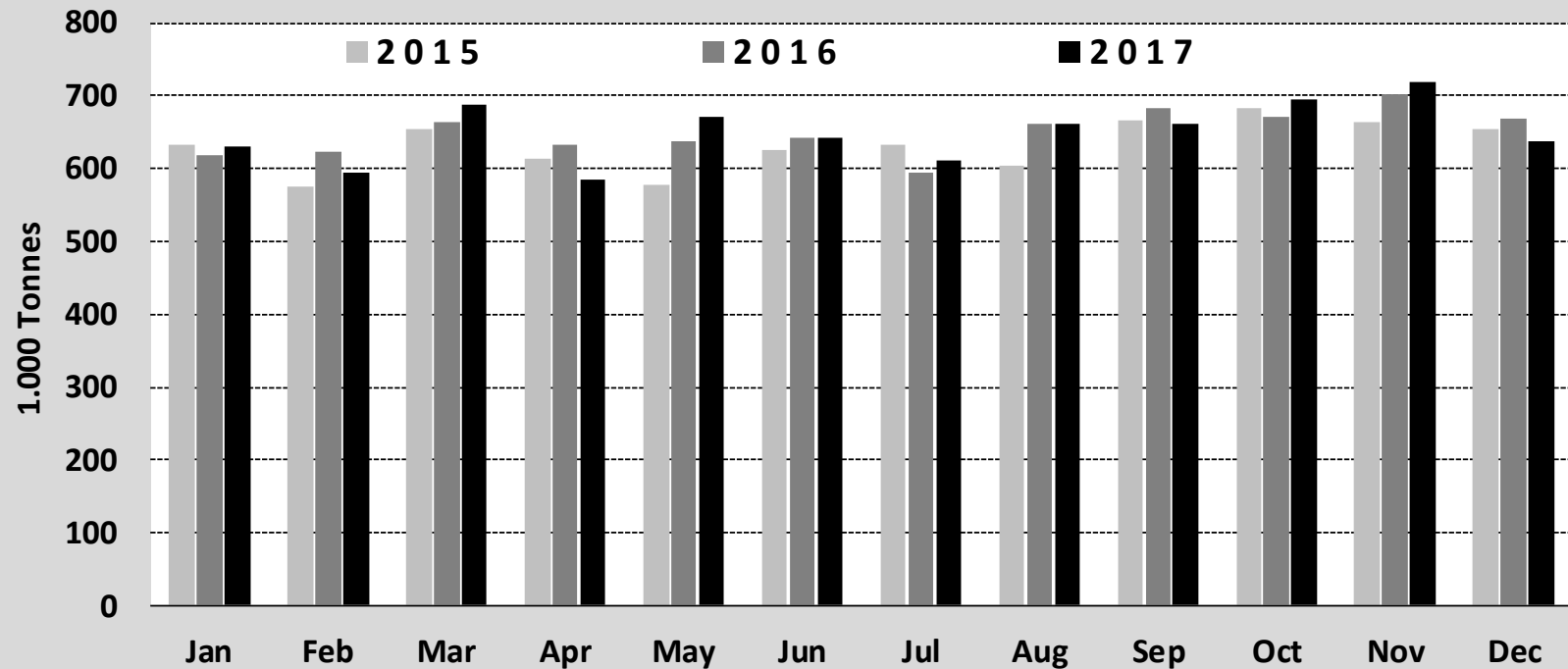


Estimates for last month :

Source : Eurostat

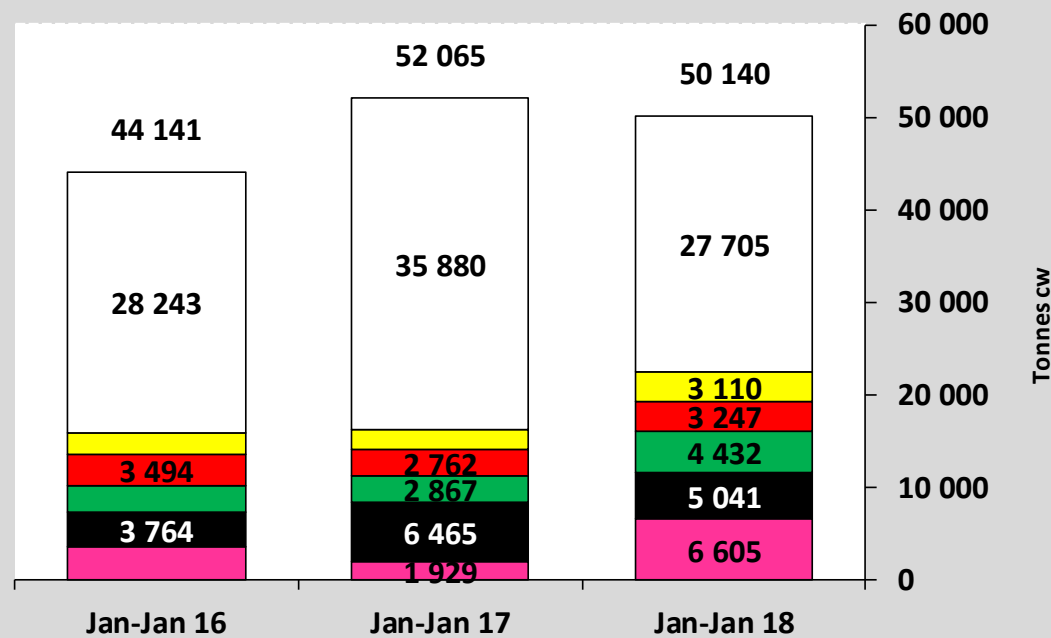


### Beef & Veal Production (E28 Slaughtering) - Tonnes



Source : Eurostat

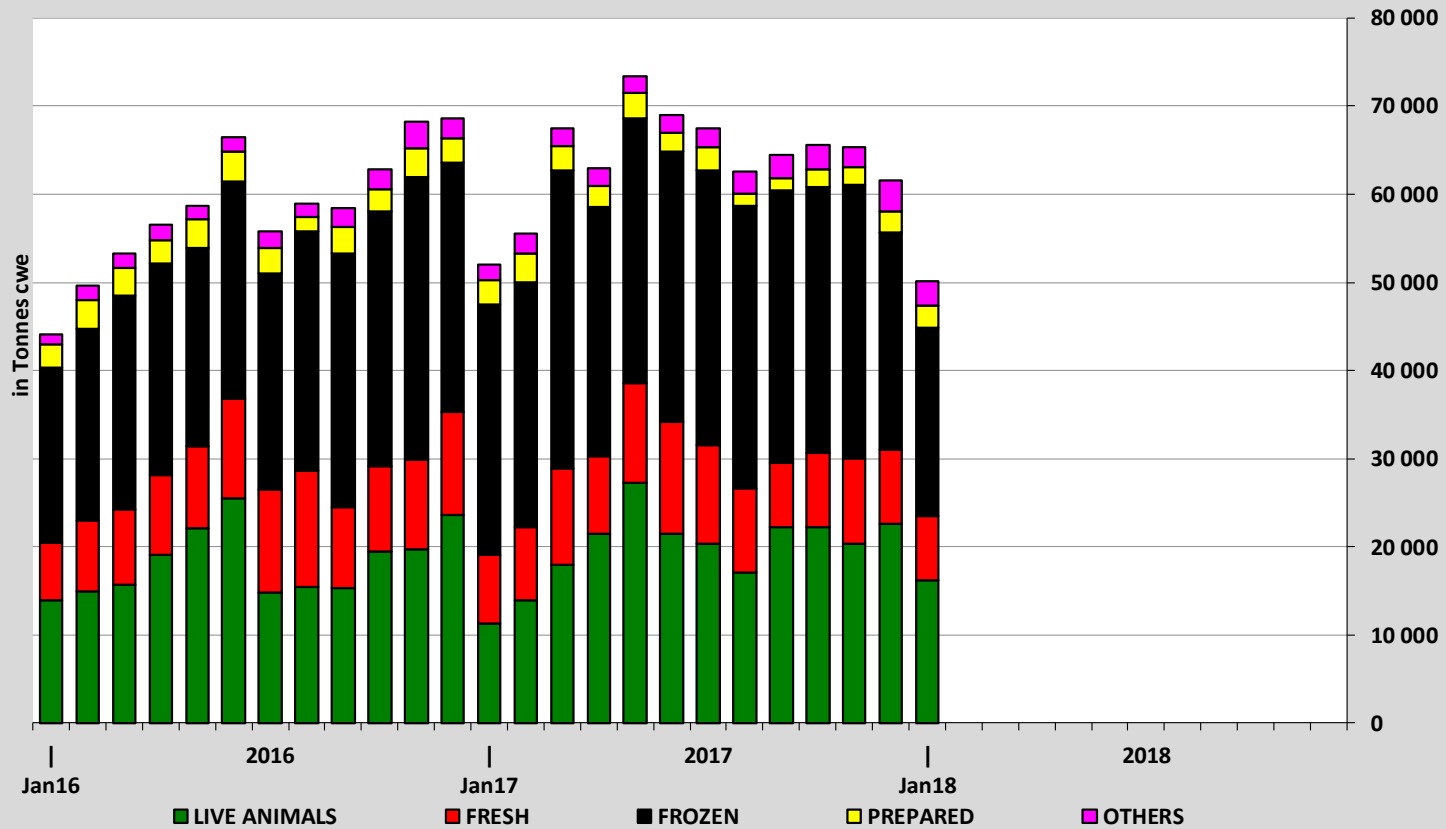
## EU EXPORTS of Beef & Veal (Tonnes cwe)



■ Turkey 
 ■ Hong Kong 
 ■ Israel 
 ■ Lebanon 
 ■ Ghana 
 ■ Other destinations

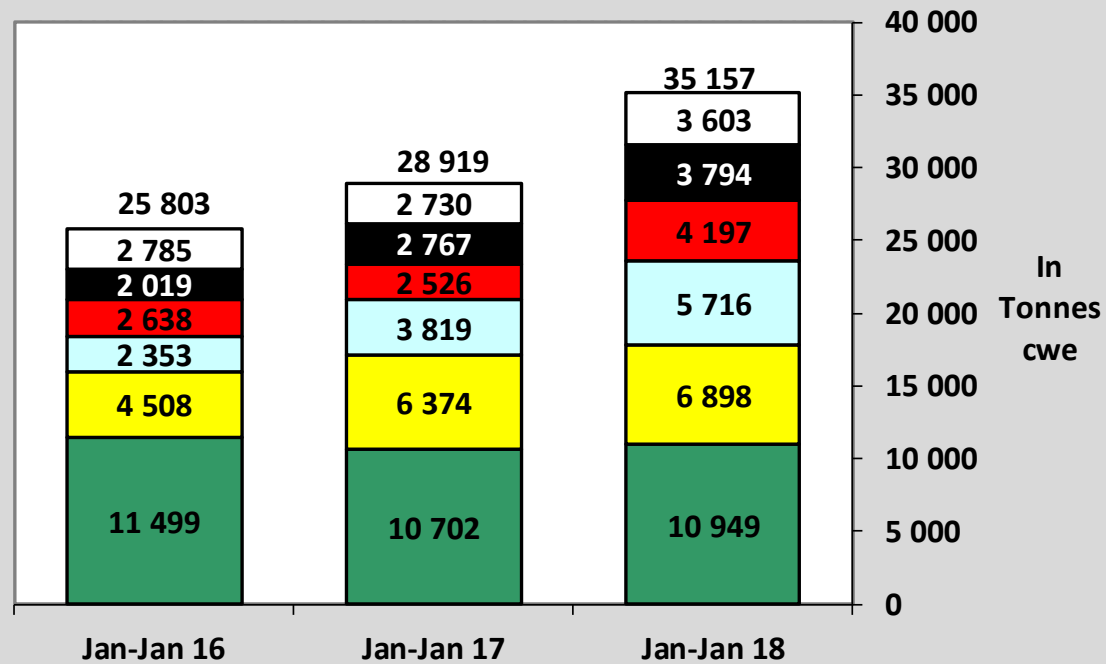
Source : Eurostat - Comext

## EU-28 Exports of BEEF products



Source : Eurostat - Comext

## IMPORTS of Beef & Veal into EU (Tonnes cwe)

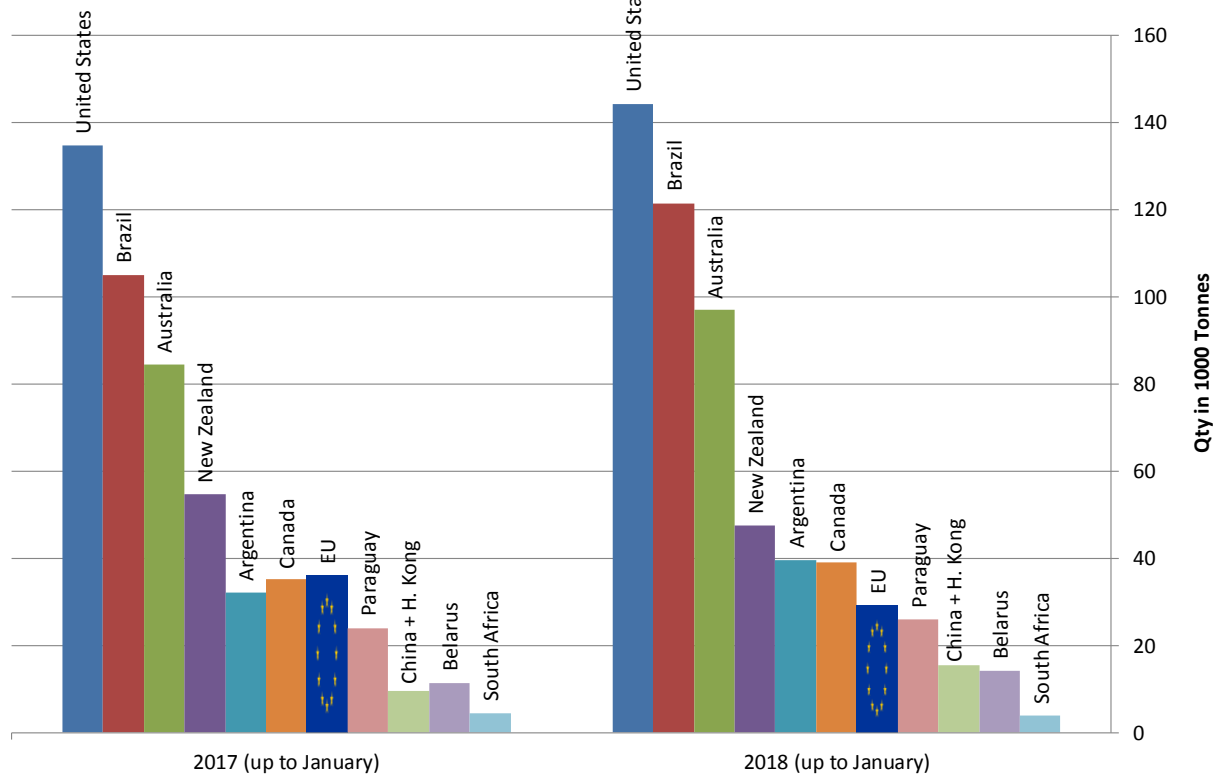


■ Brazil 
 ■ Uruguay 
 ■ Argentina 
 ■ Australia 
 ■ USA 
 ■ Other Destinations

Source : Eurostat - Comext

## Main Exporters of BEEF Products (up to January)

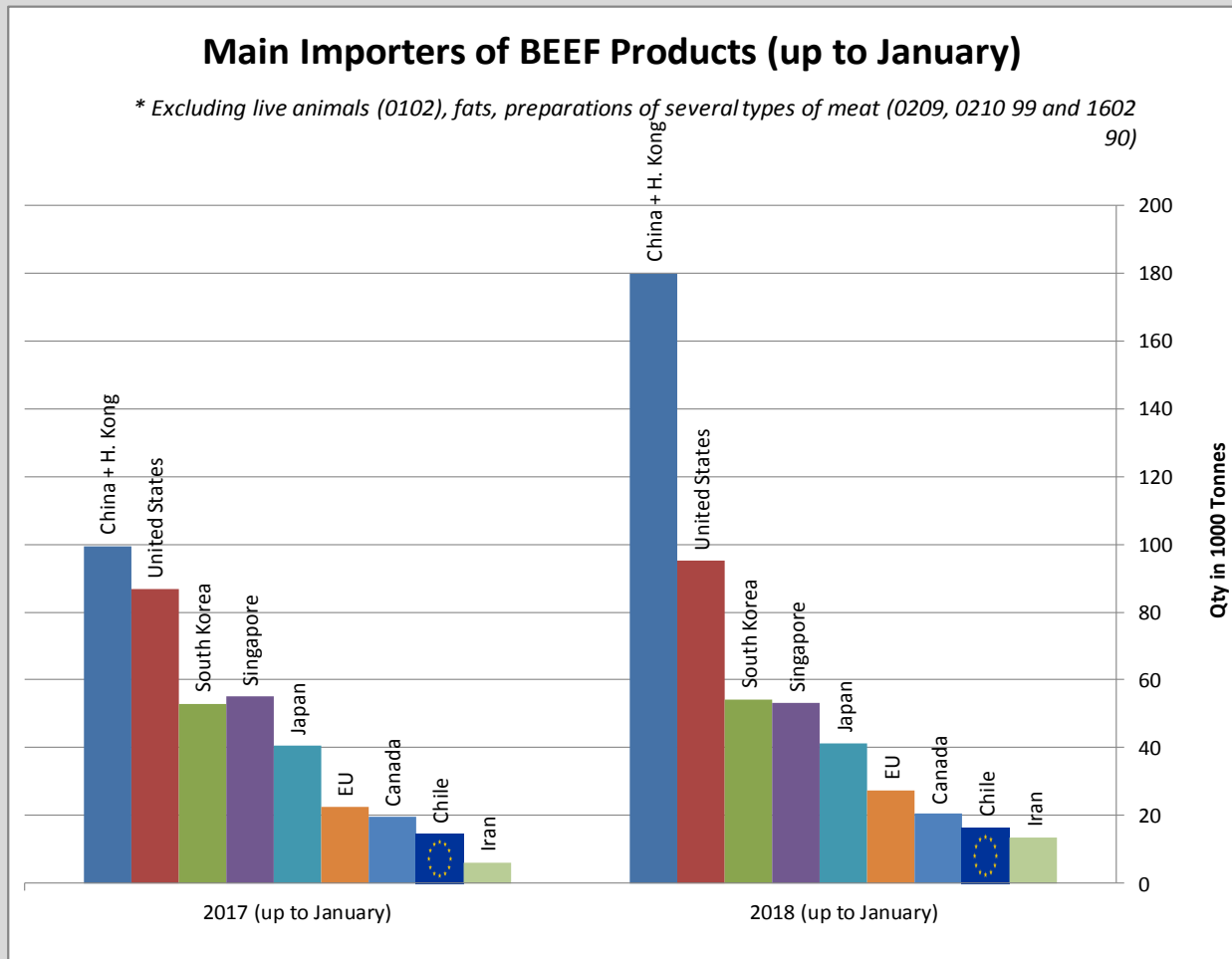
\* Excluding live animals (0102), fats, preparations of several types of meat (0209, 0210 99 and 1602 90)



Sources : Global Trade Information Services, Inc. and Eurostat - Comext

## Main Importers of BEEF Products (up to January)

\* Excluding live animals (0102), fats, preparations of several types of meat (0209, 0210 99 and 1602 90)



Sources : Global Trade Information Services, Inc. and Eurostat - Comext