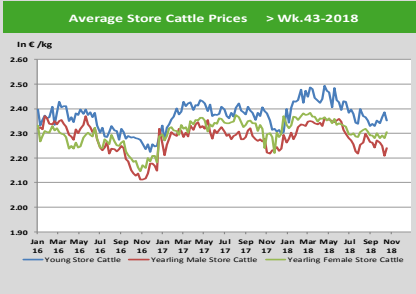
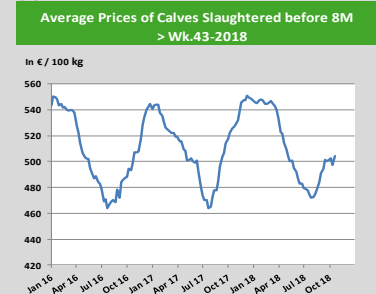
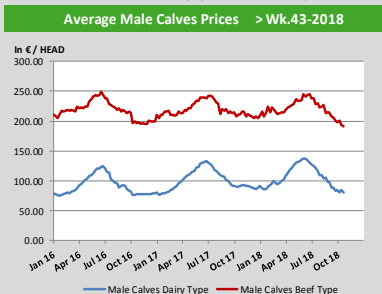
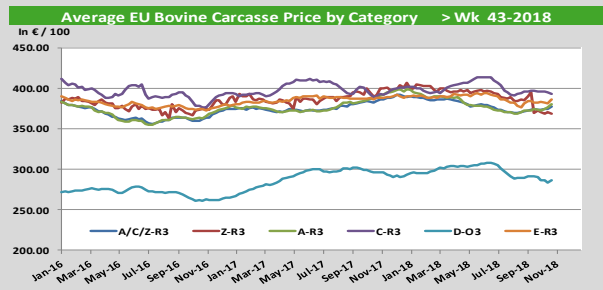
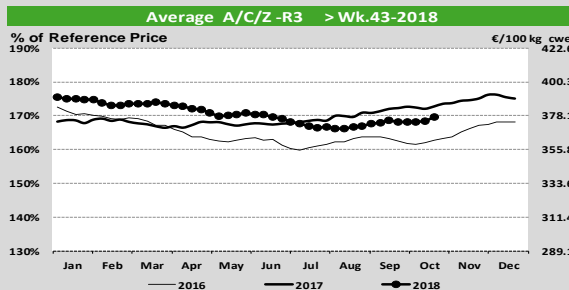
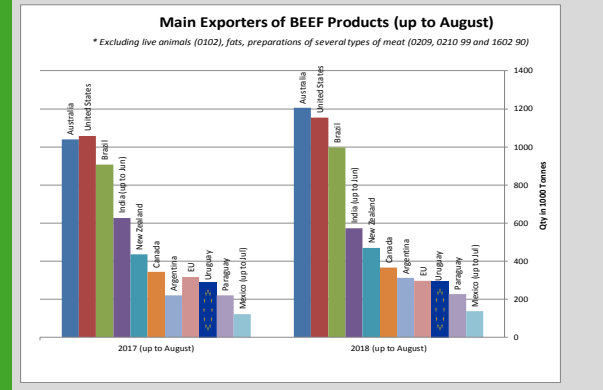
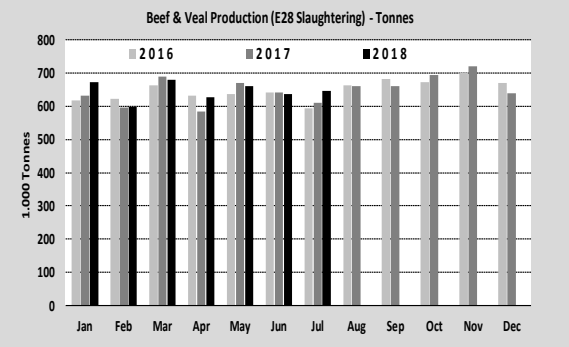
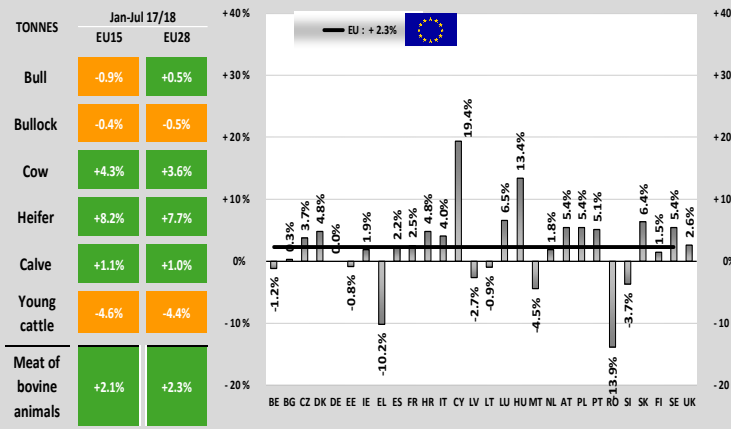


Prices

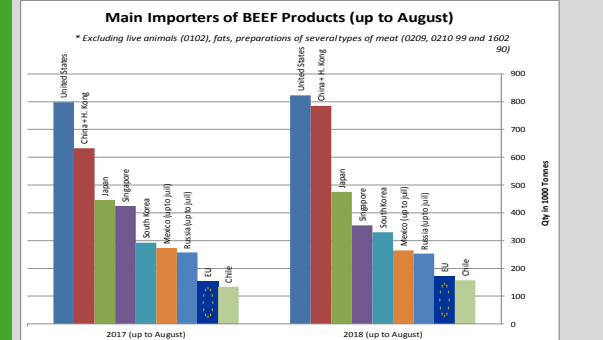
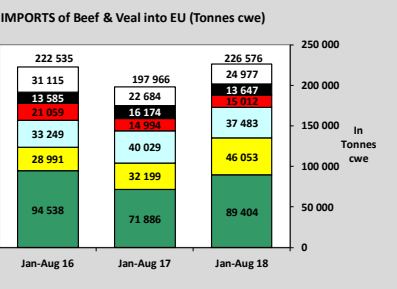
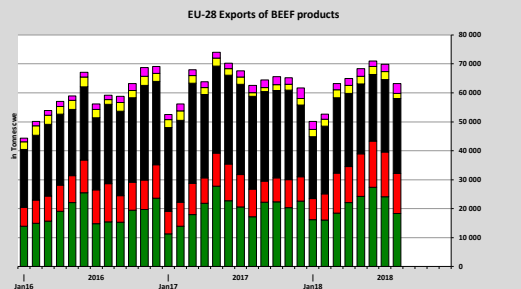
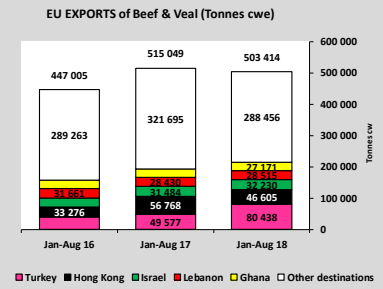
EU Prices week		43	Evolution since last week	Evolution since last month	Evolution since last year
Carcasse	Average A/C/Z-R3	377.4	+ 0.8%	+ 1.0%	- 1.7%
	Young Bovines (Z)	368.7	- 0.5%	- 1.0%	- 0.5%
	Young Bulls (A)	376.3	+ 1.2%	+ 1.7%	- 2.7%
	Steers (C)	396.4	- 0.6%	- 0.6%	+ 0.6%
	Cows (D)	286.0	+ 0.9%	- 1.4%	- 3.3%
	Heifers (E)	386.1	+ 1.2%	+ 1.1%	- 0.4%
Live Animals	Male Calves Dairy Type	79.90	- 6.2%	- 3.8%	- 12.4%
	Male Calves Beef Type	191.0	- 1.8%	- 5.1%	- 1.8%
	Young Store Cattle	2.35	- 1.4%	+ 0.0%	- 2.2%
	Yearling Male Store Cattle	2.24	+ 1.4%	- 1.4%	- 1.2%
	Yearling Female Store Cattle	2.30	+ 1.0%	+ 0.1%	- 0.6%
	Calves slaughtered <8M	504.2	+ 1.4%	+ 0.8%	- 4.2%



Production



Trade

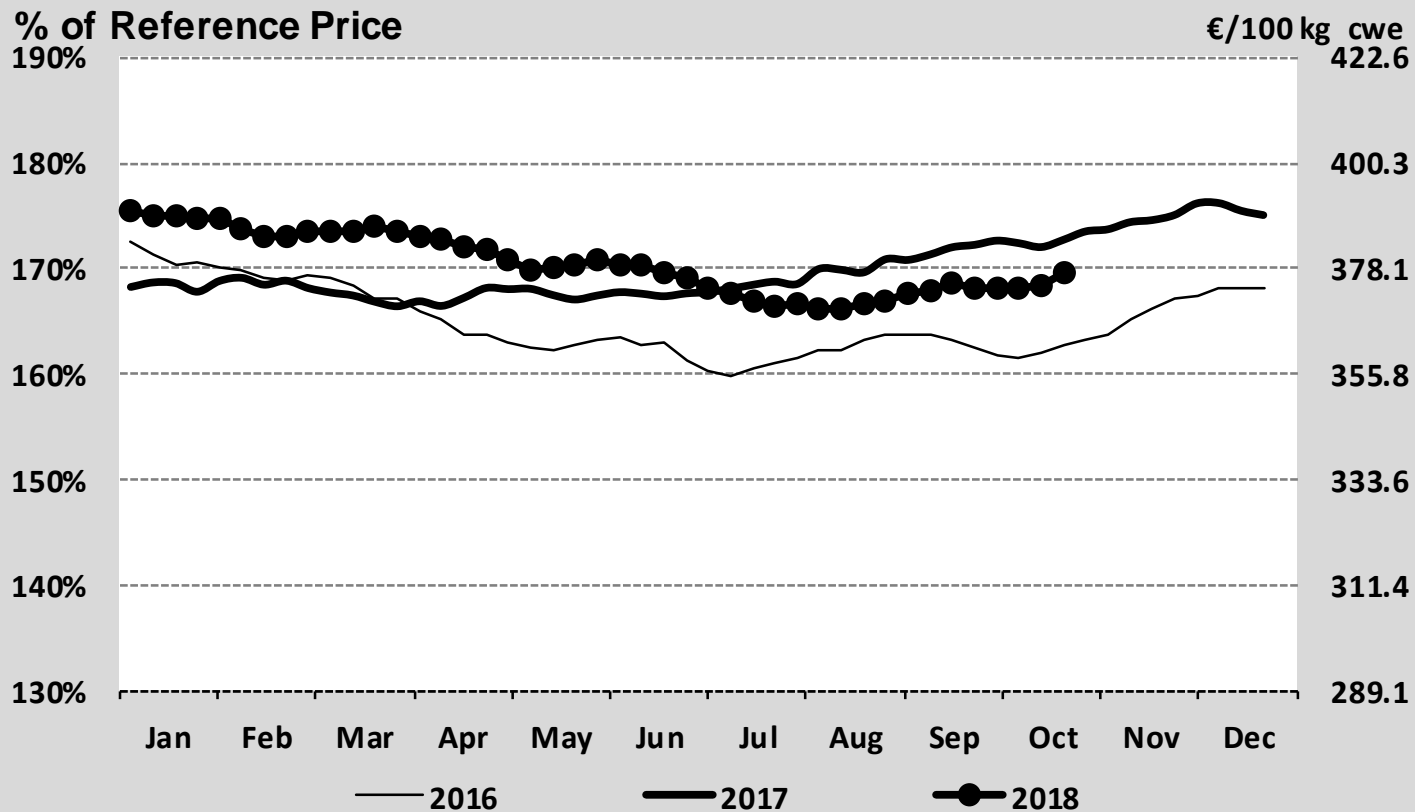


World Trade

EU Prices week		43	Evolution since last week	Evolution since last month	Evolution since last year
Carcasse	Average A/C/Z -R3	377.4	+ 0.8%	+ 1.0%	- 1.7%
	Young Bovines (Z)	368.7	- 0.5%	- 1.0%	- 0.5%
	Young Bulls (A)	376.3	+ 1.2%	+ 1.7%	- 2.7%
	Steers (C)	396.4	- 0.6%	- 0.6%	+ 0.6%
	Cows (D)	286.0	+ 0.9%	- 1.4%	- 3.3%
	Heifers (E)	386.1	+ 1.2%	+ 1.1%	- 0.4%
Live Animals	Male Calves Dairy Type	79.90	- 6.2%	- 3.8%	- 12.4%
	Male Calves Beef Type	191.0	- 1.8%	- 5.1%	- 1.8%
	Young Store Cattle	2.35	- 1.4%	+ 0.0%	- 2.2%
	Yearling Male Store Cattle	2.24	+ 1.4%	- 1.4%	- 1.2%
	Yearling Female Store Cattle	2.30	+ 1.0%	+ 0.1%	- 0.6%
	Calves slaughtered <8M	504.2	+ 1.4%	+ 0.8%	- 4.2%

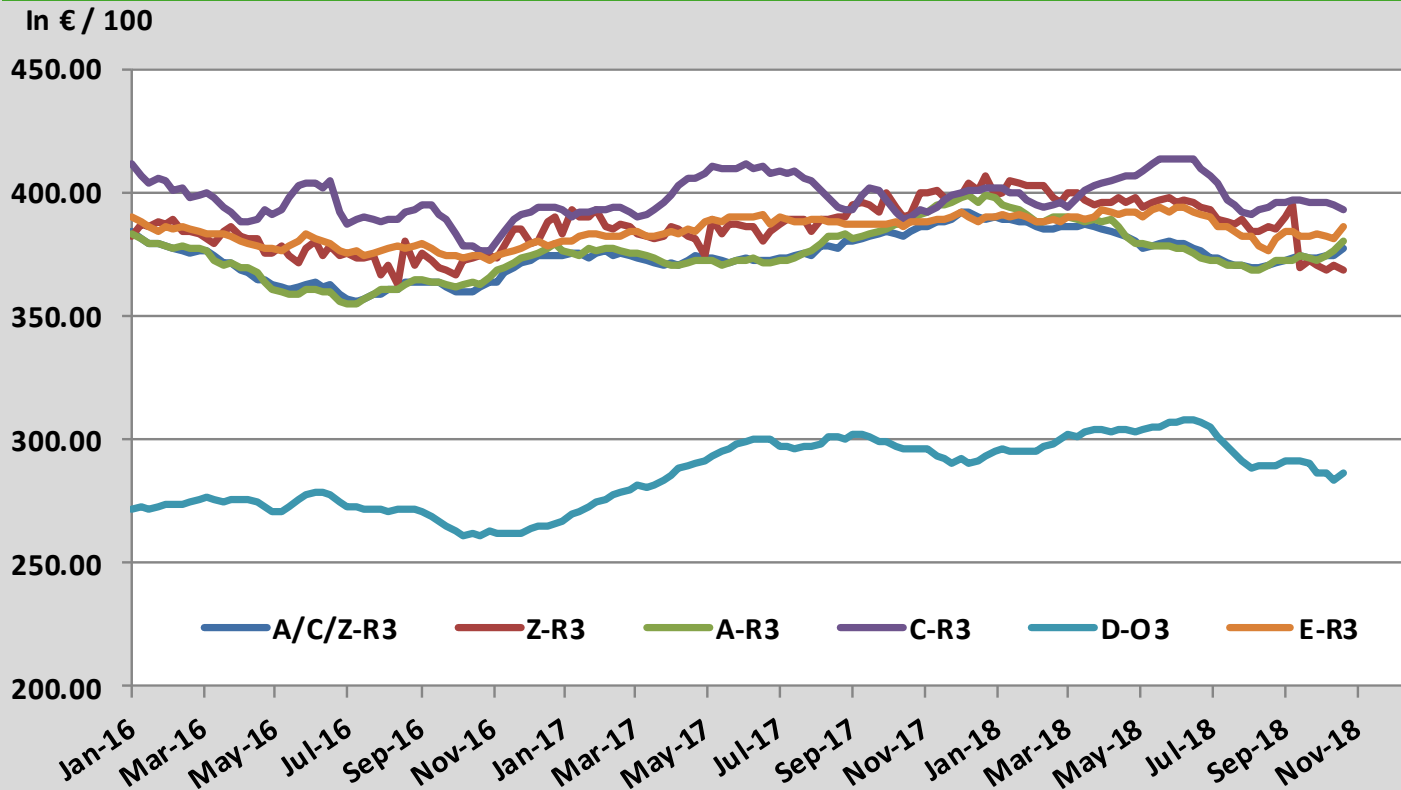
Sources : MSs notifications (Regulation (EC) 1249/2008 and 807/2013)

Average A/C/Z -R3 > Wk.43-2018



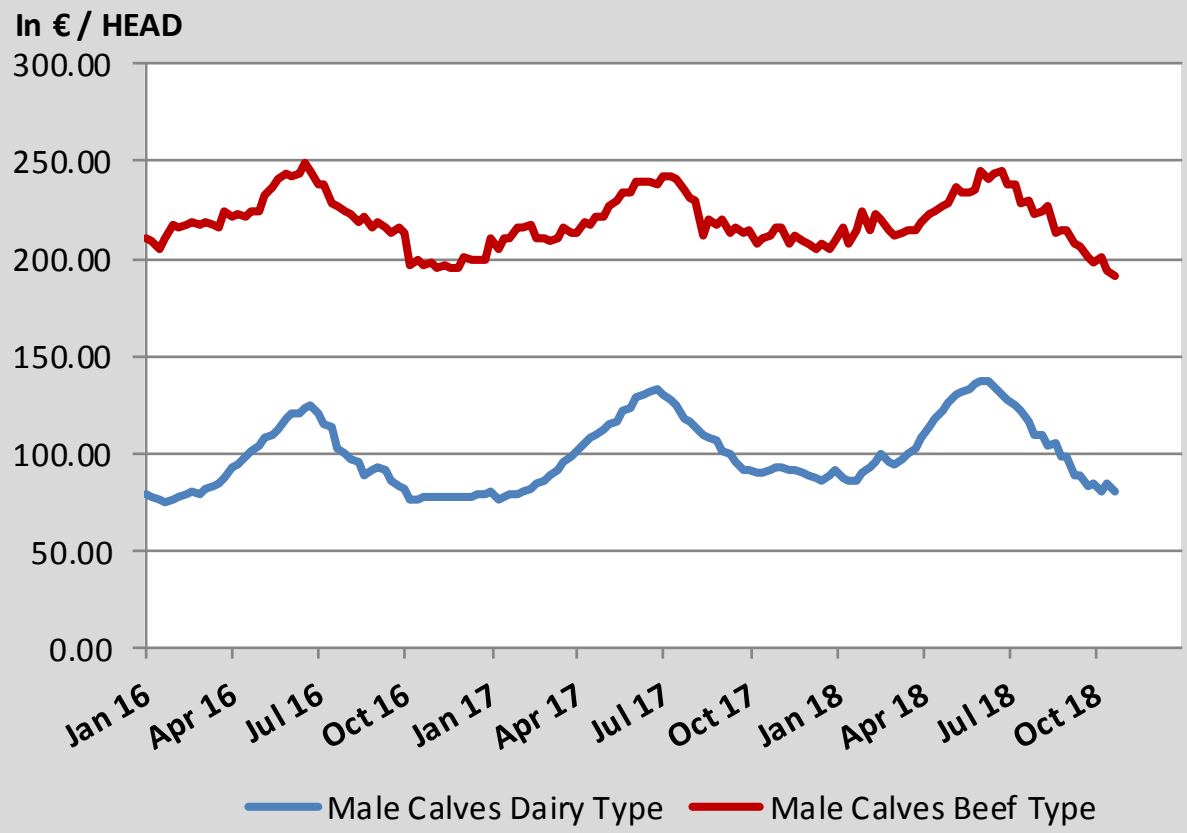
Source : MSs notifications (Regulation (EC) 1249/2008)

Average EU Bovine Carcasse Price by Category > Wk 43-2018



Source : MSs notifications (Regulation (EC) 1249/2008)

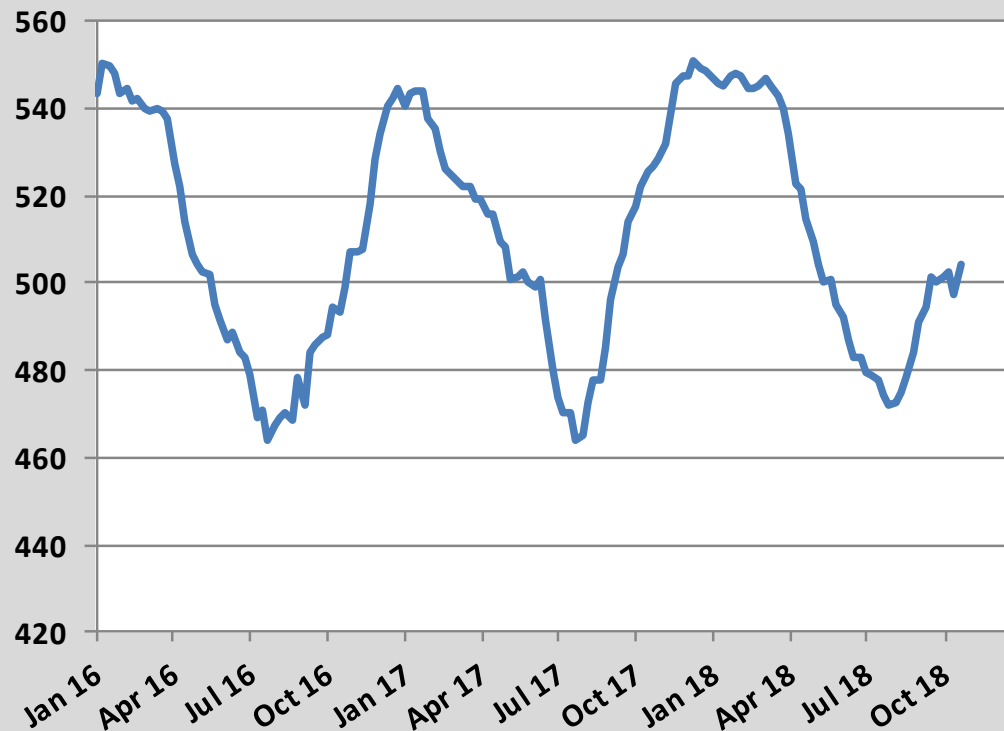
Average Male Calves Prices > Wk.43-2018



Source : MSs notifications (Regulation (EC) 807/2013)

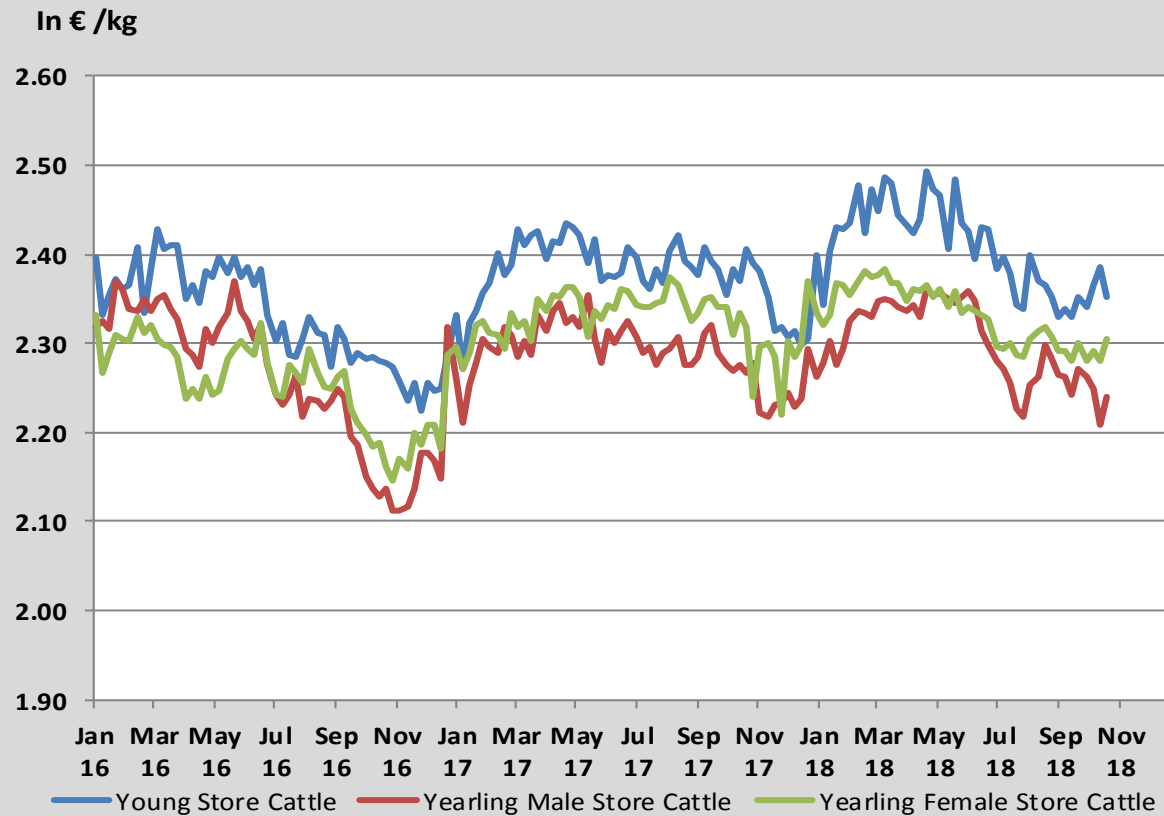
Average Prices of Calves Slaughtered before 8M > Wk.43-2018

In € / 100 kg



Source : MSs notifications (Regulation (EC) 807/2013)

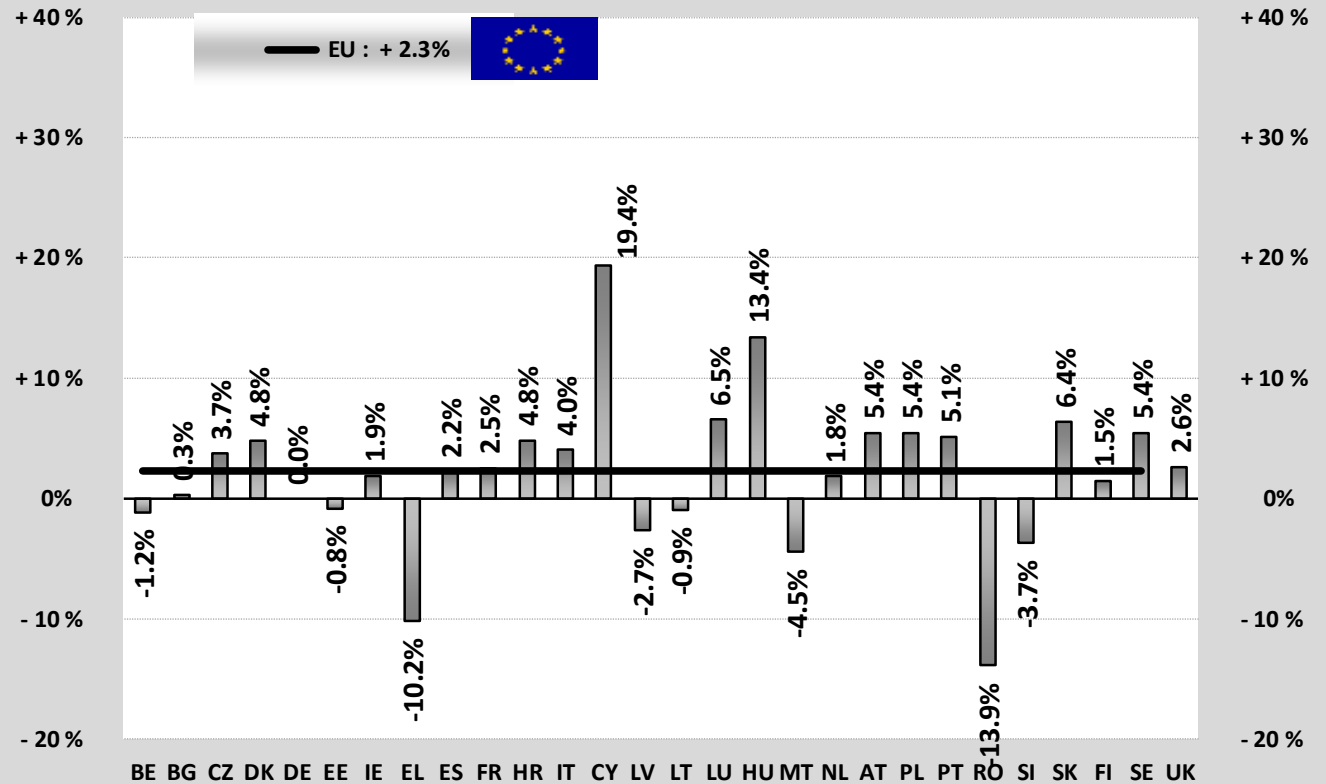
Average Store Cattle Prices > Wk.43-2018



Source : MSs notifications (Regulation (EC) 807/2013)

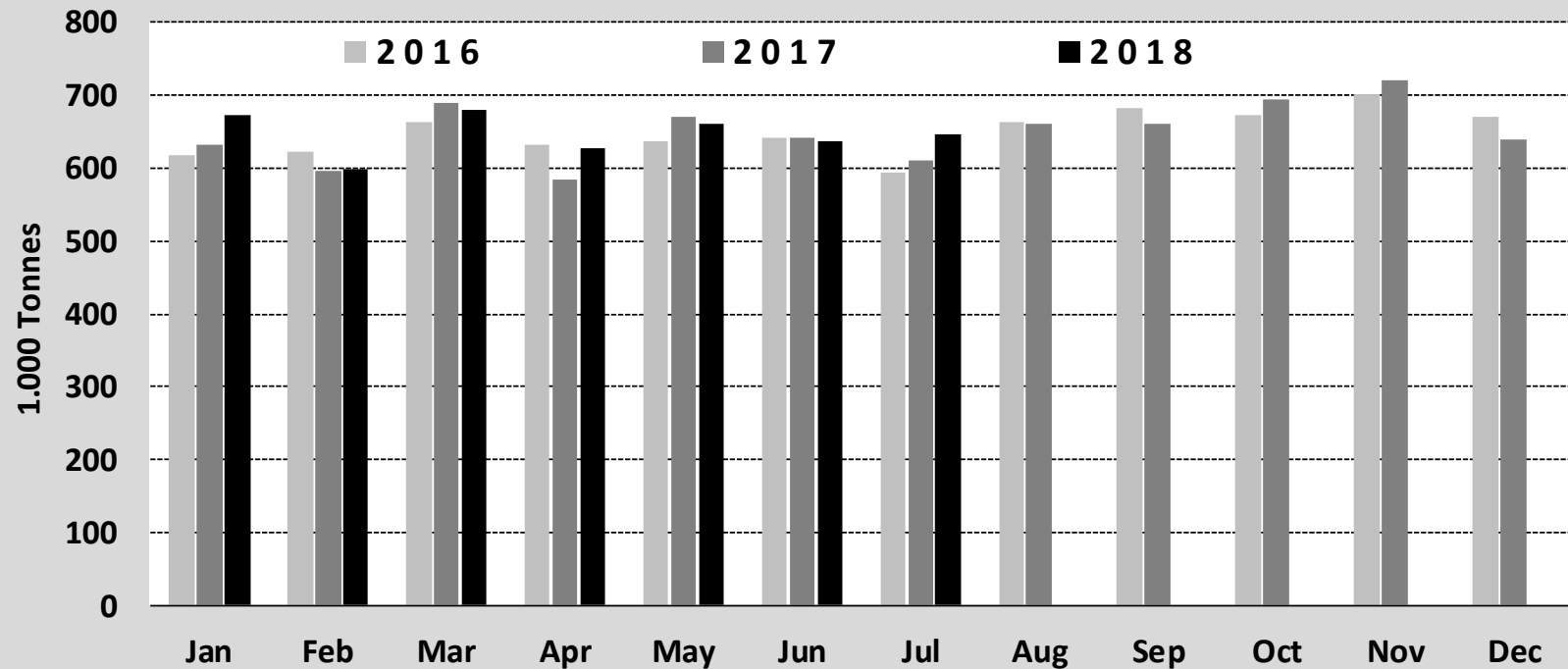
TONNES	Jan-Jul 17/18	
	EU15	EU28
Bull	-0.9%	+0.5%
Bullock	-0.4%	-0.5%
Cow	+4.3%	+3.6%
Heifer	+8.2%	+7.7%
Calve	+1.1%	+1.0%
Young cattle	-4.6%	-4.4%
Meat of bovine animals	+2.1%	+2.3%

Estimates for last month :



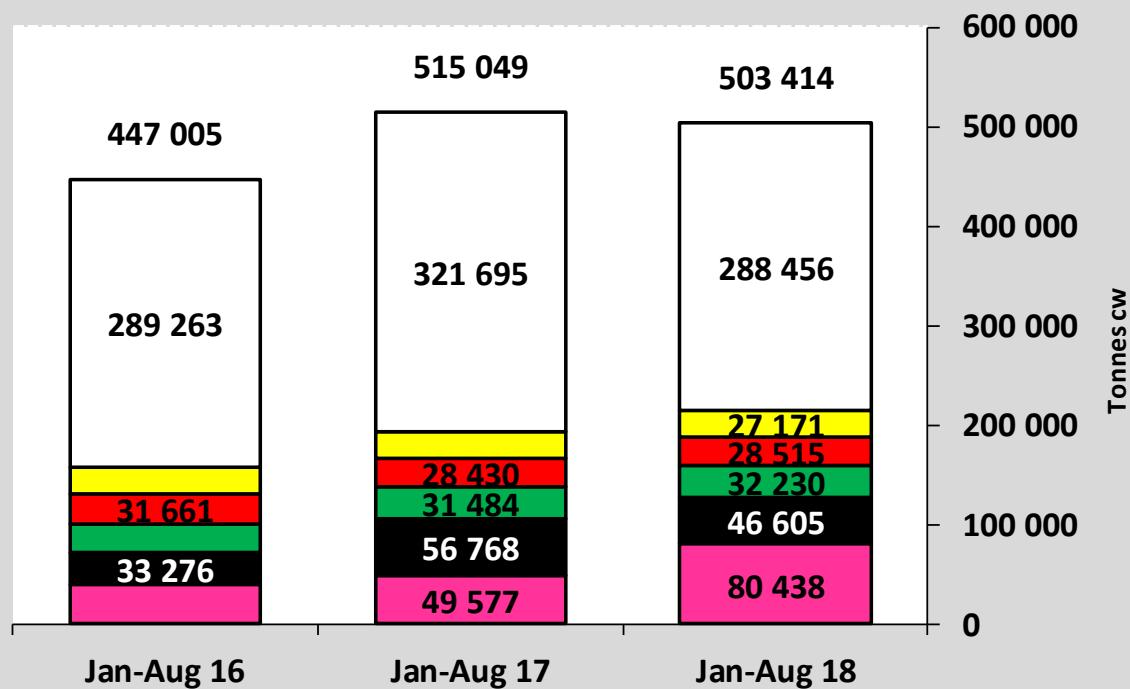
Source : Eurostat

Beef & Veal Production (E28 Slaughtering) - Tonnes



Source : Eurostat

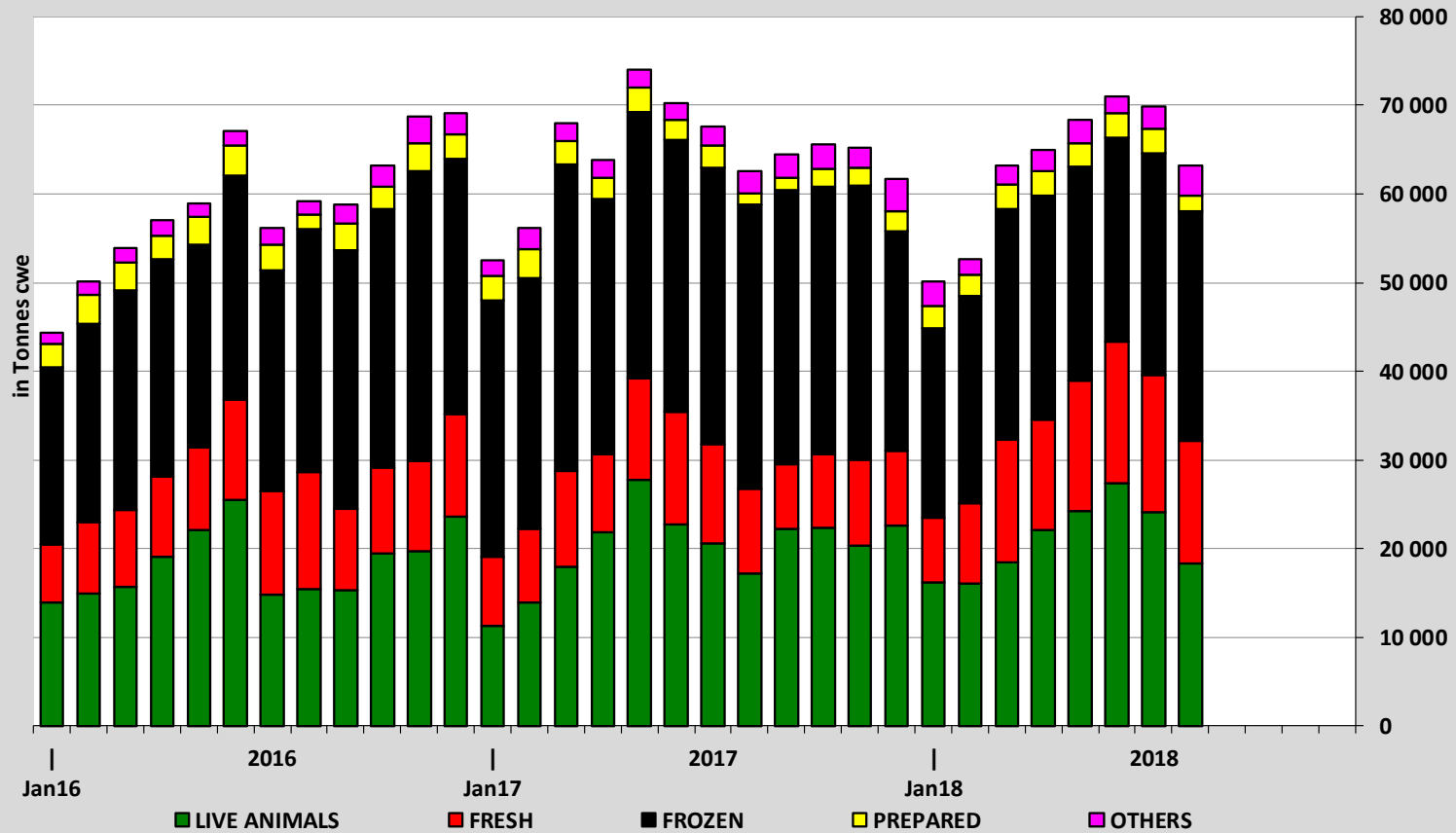
EU EXPORTS of Beef & Veal (Tonnes cwe)



■ Turkey
 ■ Hong Kong
 ■ Israel
 ■ Lebanon
 ■ Ghana
 Other destinations

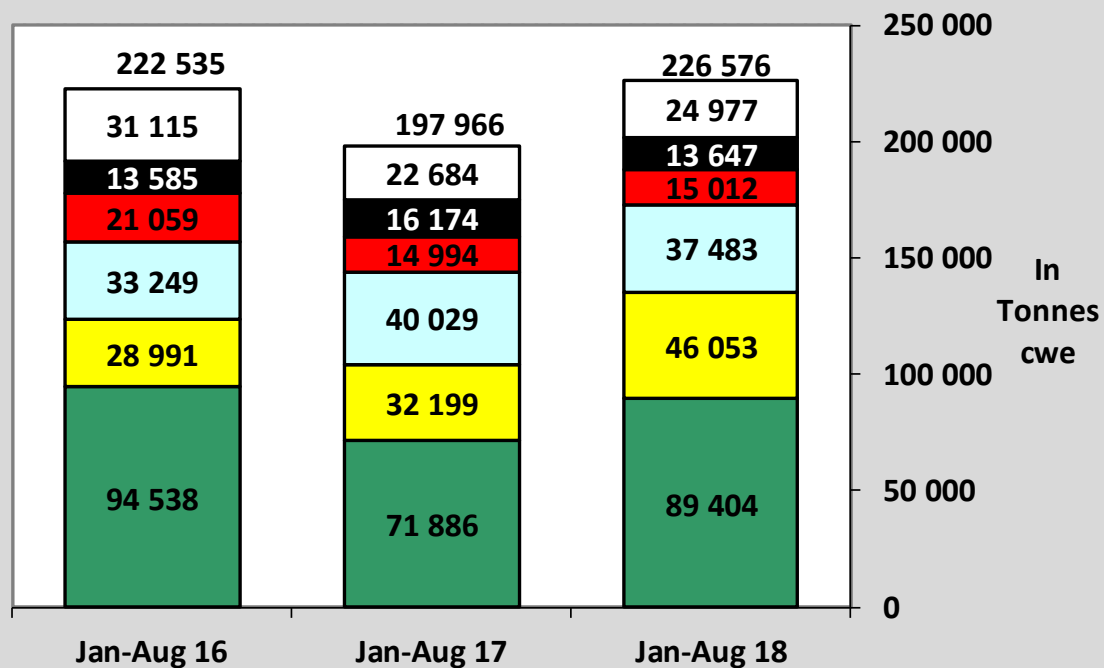
Source : Eurostat - Comext

EU-28 Exports of BEEF products



Source : Eurostat - Comext

IMPORTS of Beef & Veal into EU (Tonnes cwe)

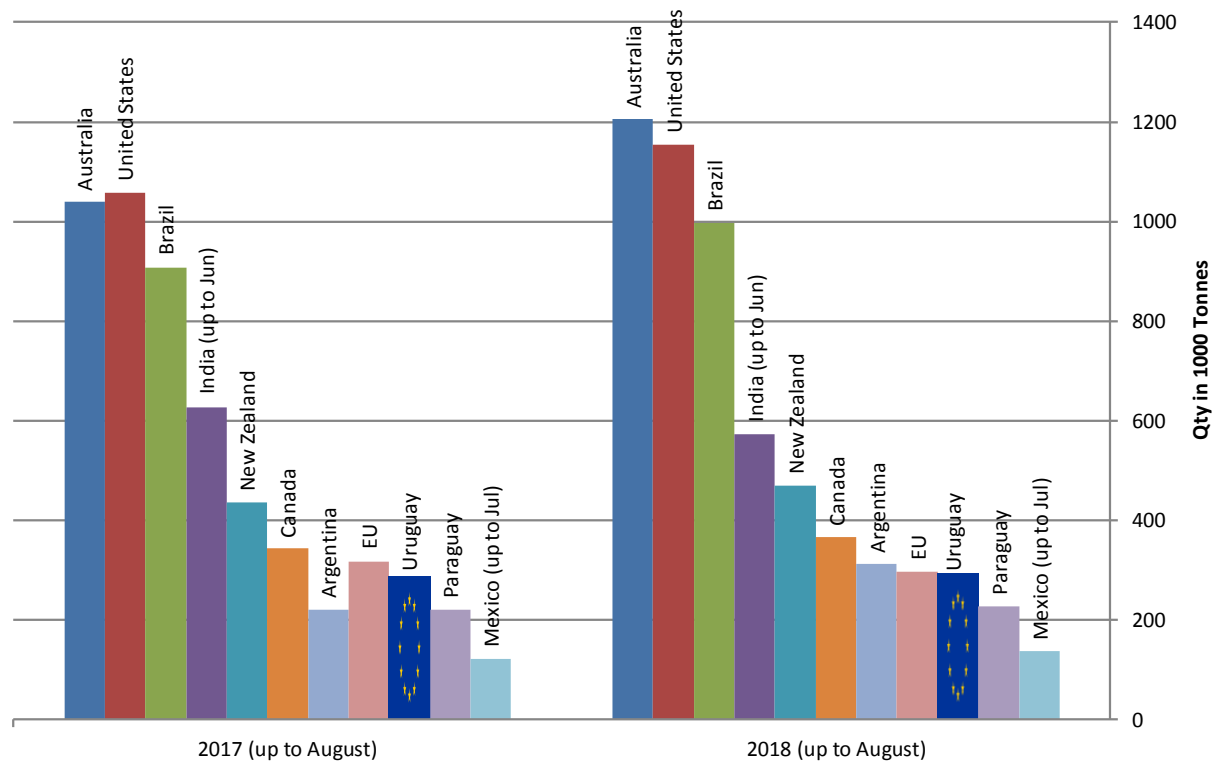


■ Brazil
 ■ Argentina
 ■ Uruguay
 ■ Australia
 ■ USA
 ■ Other Destinations

Source : Eurostat - Comext

Main Exporters of BEEF Products (up to August)

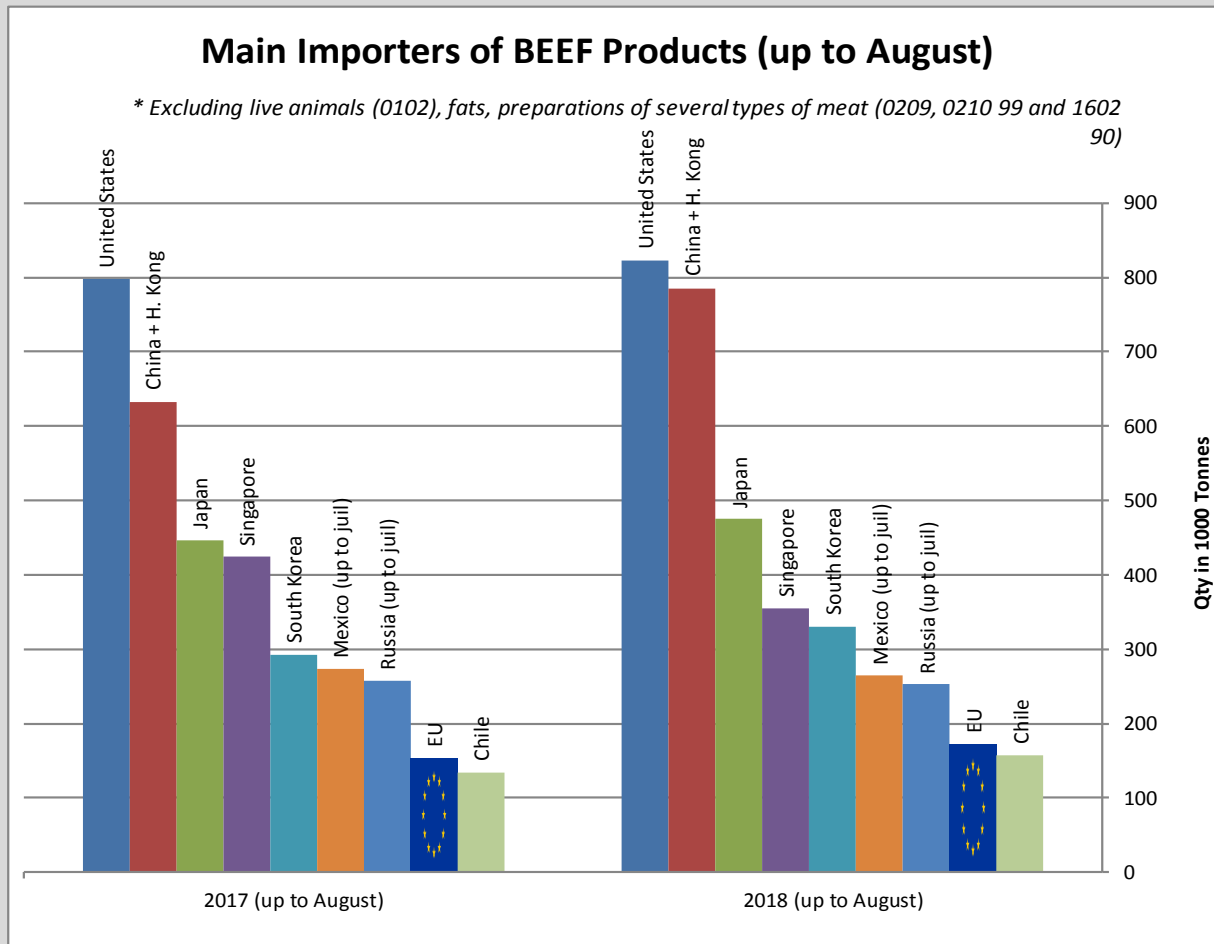
* Excluding live animals (0102), fats, preparations of several types of meat (0209, 0210 99 and 1602 90)



Sources : Global Trade Information Services, Inc. and Eurostat - Comext

Main Importers of BEEF Products (up to August)

* Excluding live animals (0102), fats, preparations of several types of meat (0209, 0210 99 and 1602 90)



Sources : Global Trade Information Services, Inc. and Eurostat - Comext